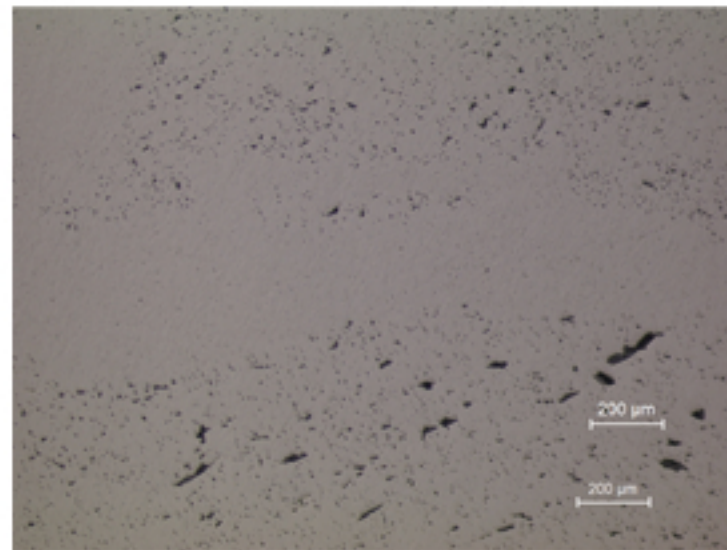


A06 - PIECE OF ANCIENT FORGED IRON



A06.1

Identification

Sample: A06
Card reference: S8
Origin: Cambodia
Location: Musee de l'Homme, Paris

Description

After polishing impurities are visible that follow the forge working. The structure consists of ferrite grains.

Figure captions

A06.1

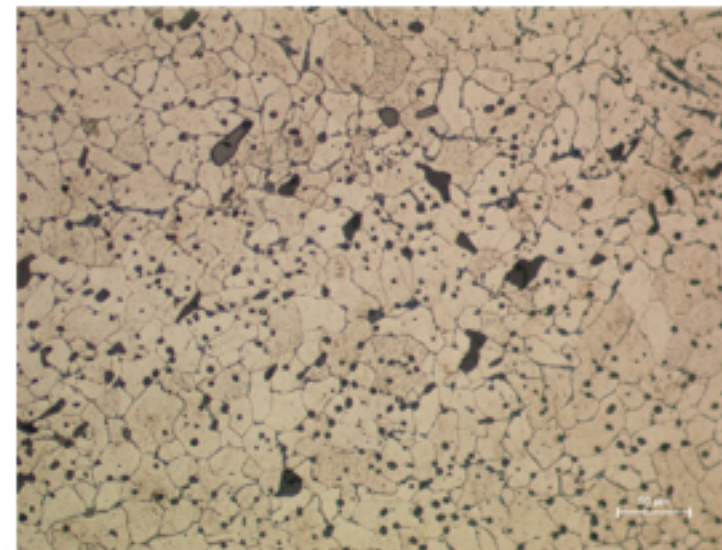
General view showing chemical heterogeneities: areas with dark inclusions following the forging work.

A06.2

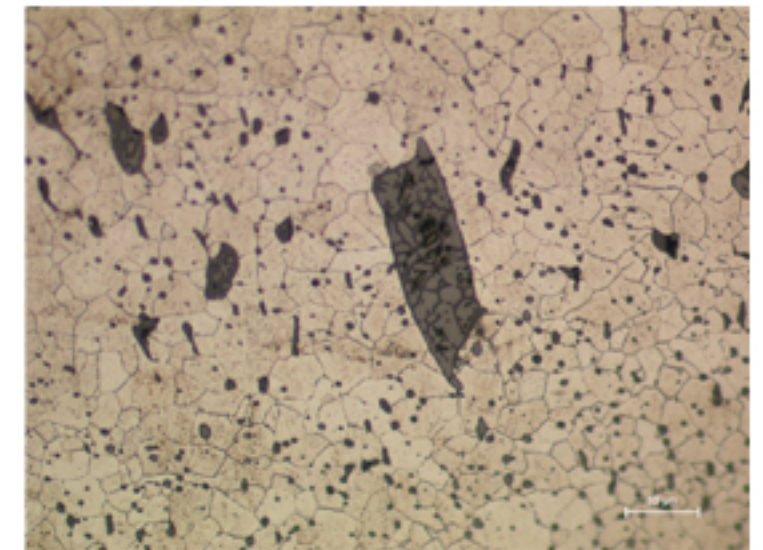
Detail showing the matrix which consists of ferrite grains and many slag inclusions (etchant: Nital 4%).

A06.3

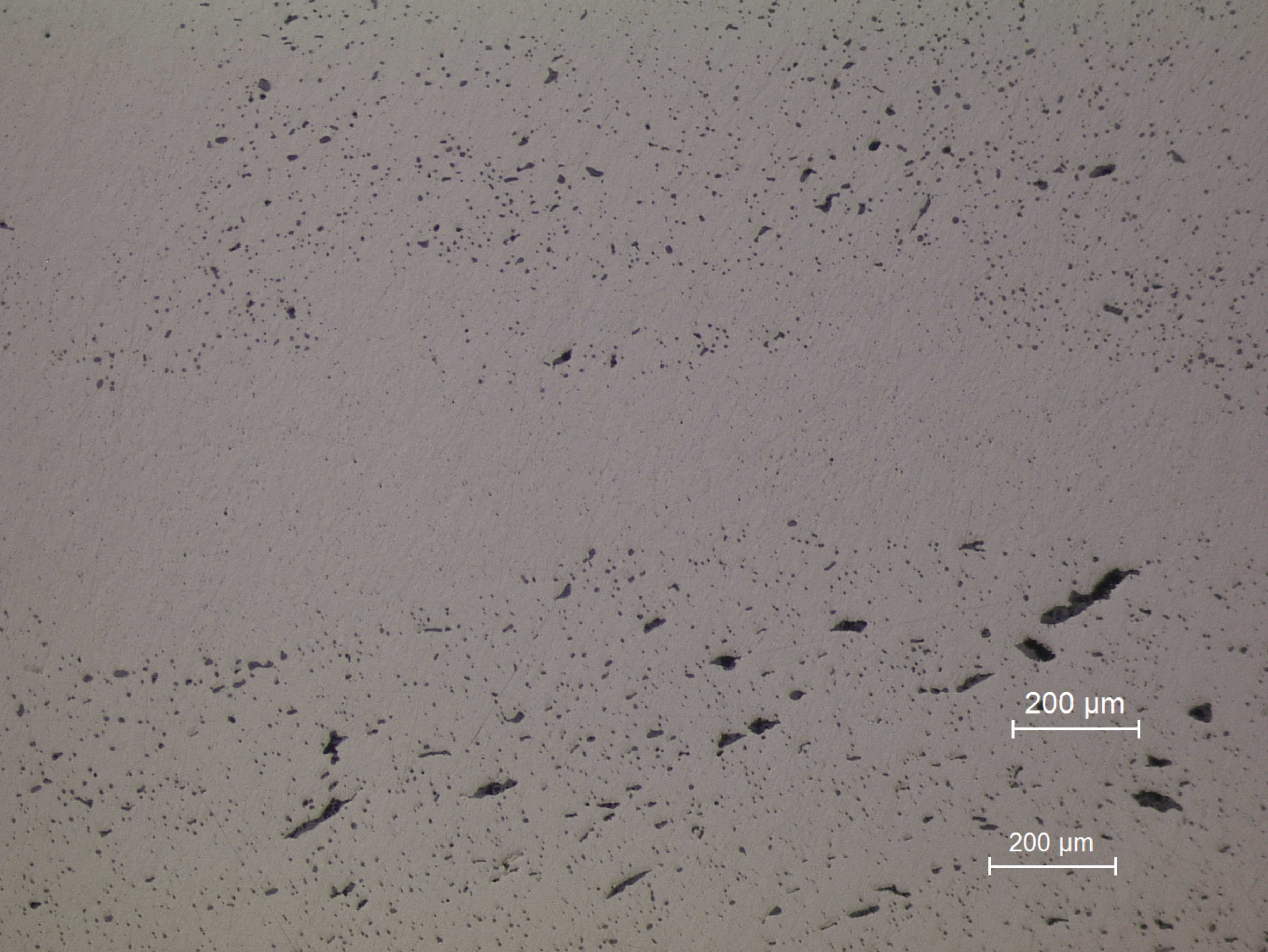
Detail of the slag inclusions, which contain several phases, probably silicates (etchant: Nital 4%).



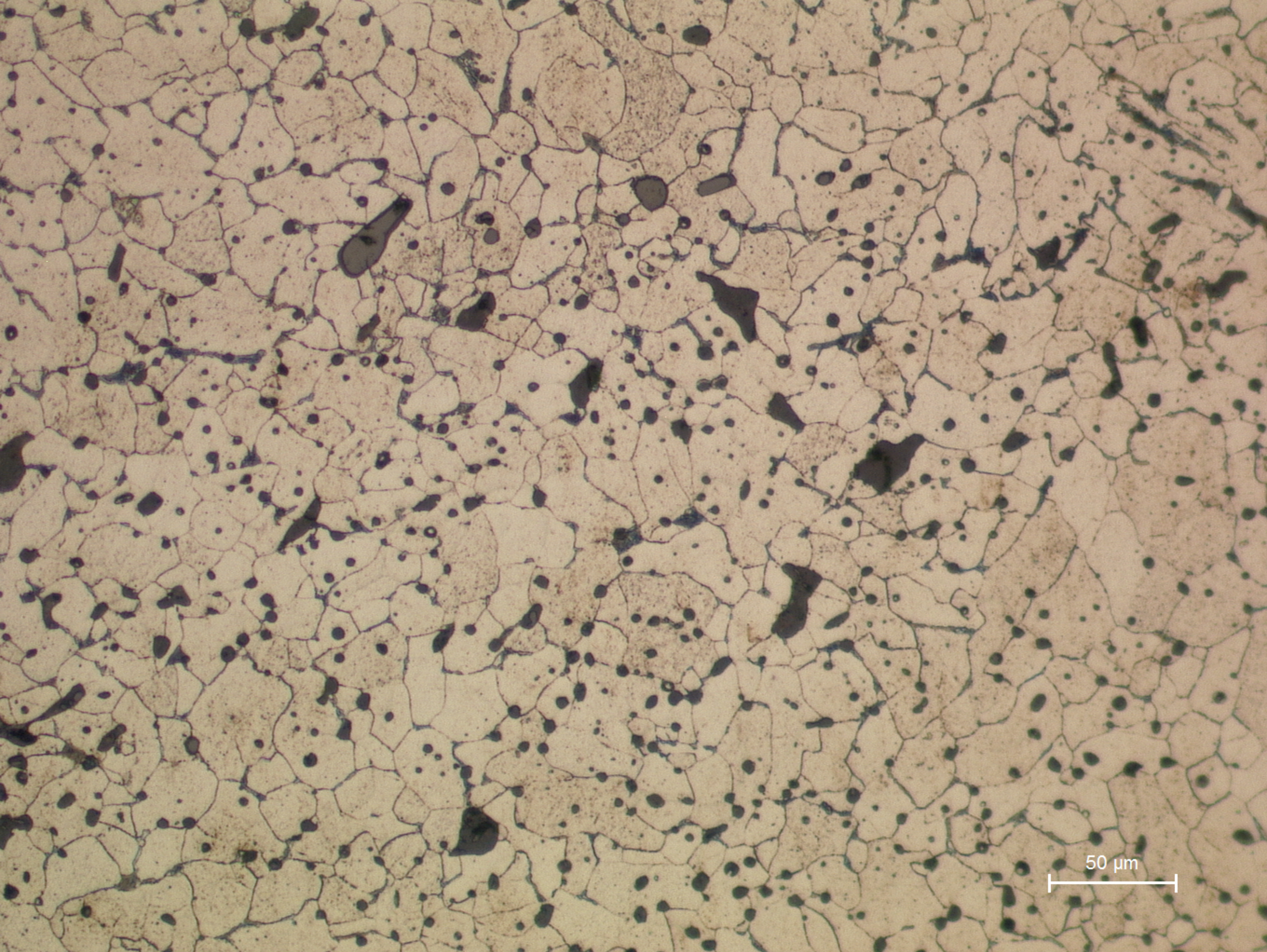
A06.2



A06.3

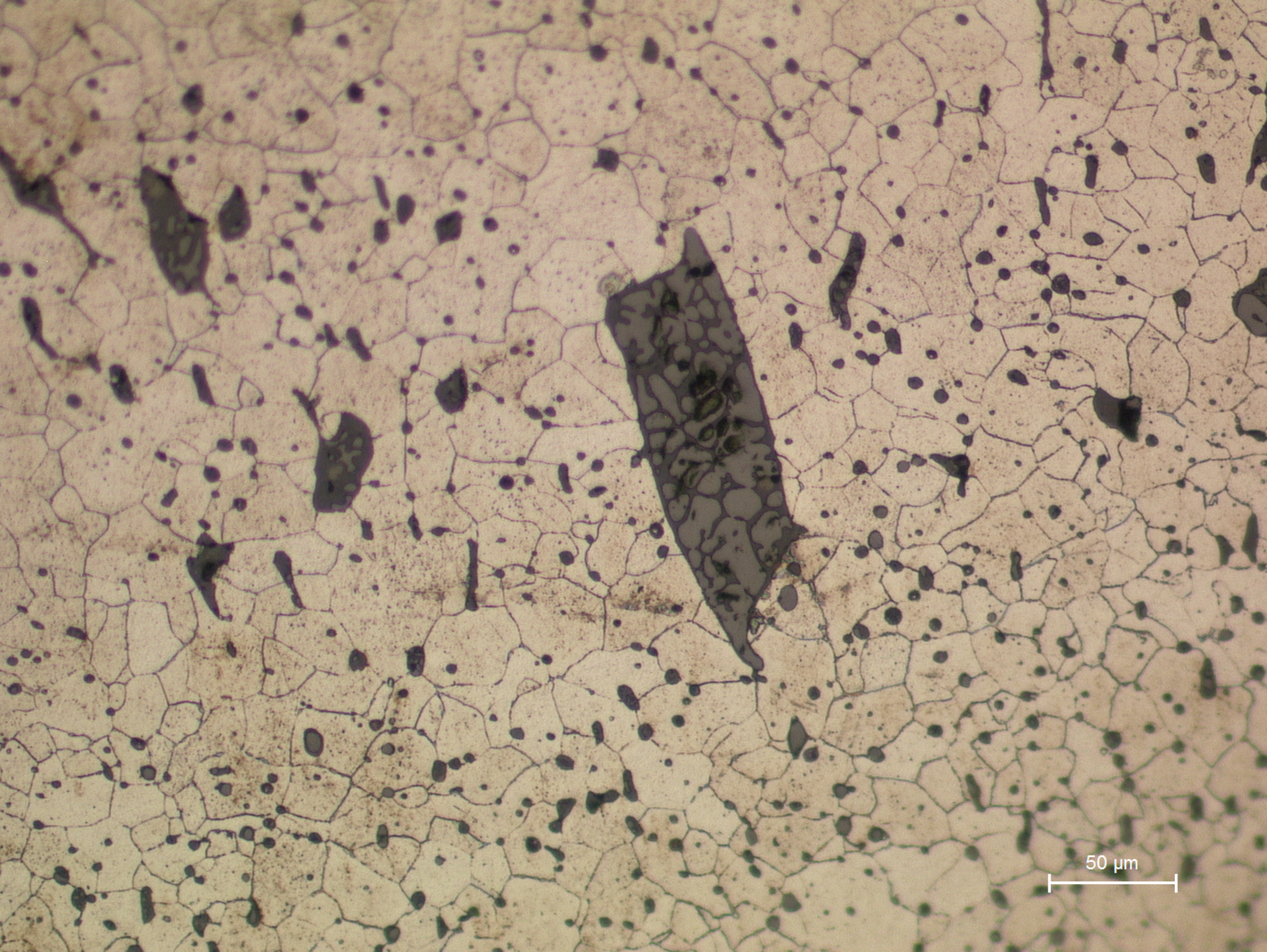


A06.1
General view showing chemical heterogeneities: areas with dark inclusions following the forging work.



50 μm

A06.2
Detail showing the matrix which consists of ferrite grains and many slag inclusions (etchant: Nital 4%).



50 μm

A06.3
Detail of the slag inclusions, which contain several phases, probably silicates (etchant: Nital 4%).