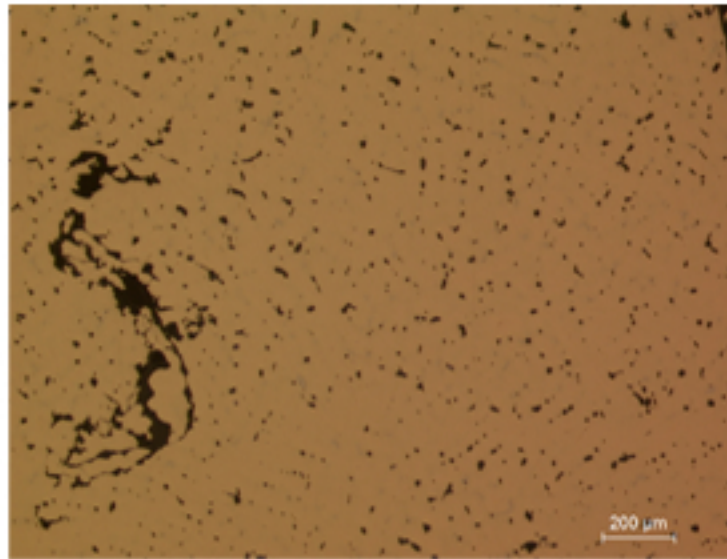


A135 - BRONZE FRAGMENT



A135.1

Identification

Sample: A135 (A137)
Card reference: C7
Origin: Lorraine
Location: n/a

Description

Cast tin bronze, deep penetration of corrosion.

Figure captions

A135.1

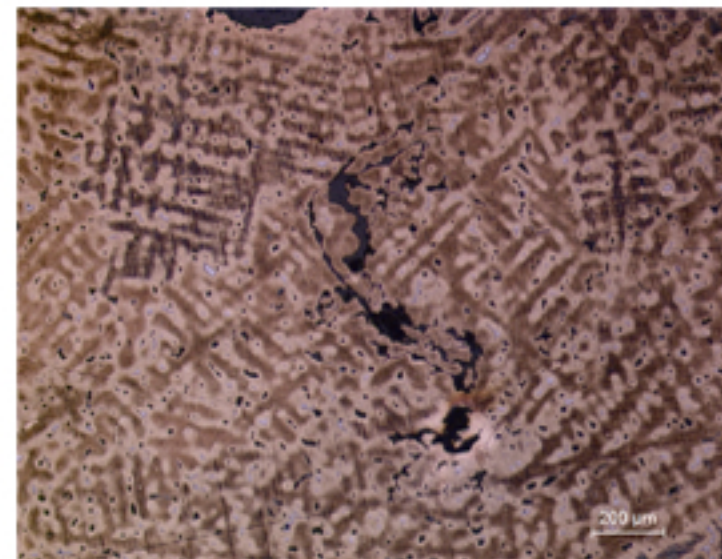
General view, showing inclusions and shrinkage voids. The large size of primary dendrites indicates a slow cooling rate.

A135.2

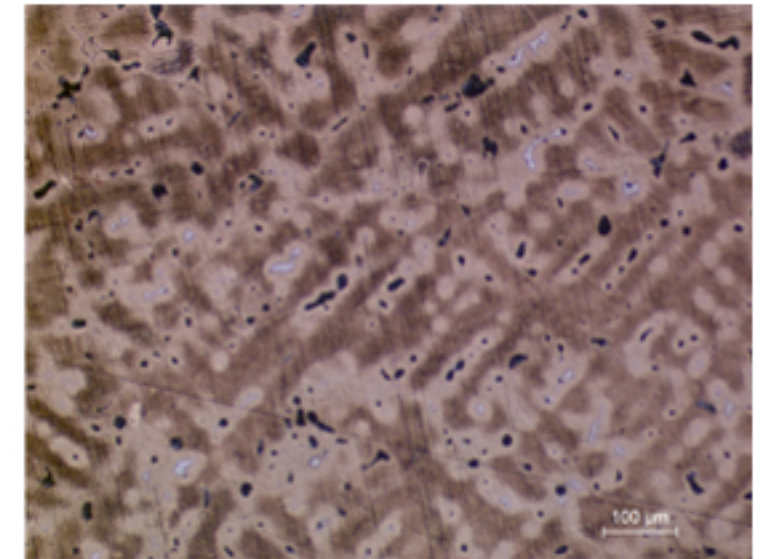
Almost the same view as A135.1, after etching: showing dendrites with a high degree of microsegregation (coring); the interdendritic structure is eutectoid and contains impurities (Zn, S detected). (etching solution: aqueous FeCl_3).

A135.3

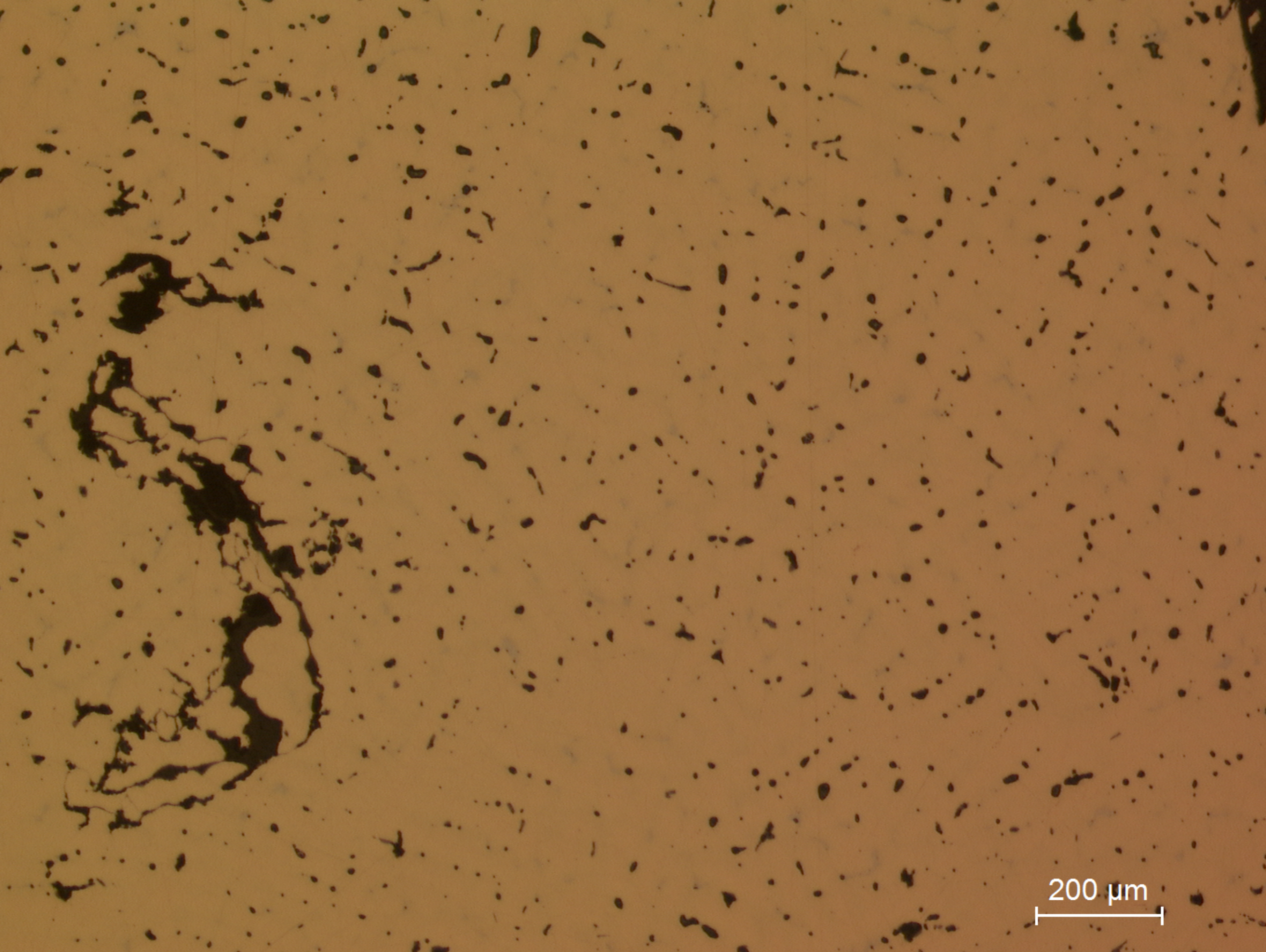
Detail, showing evidence of coring and the location of small areas of eutectoid phases (blue grey) together with sulphide inclusions (etchant: aqueous FeCl_3).



A135.2

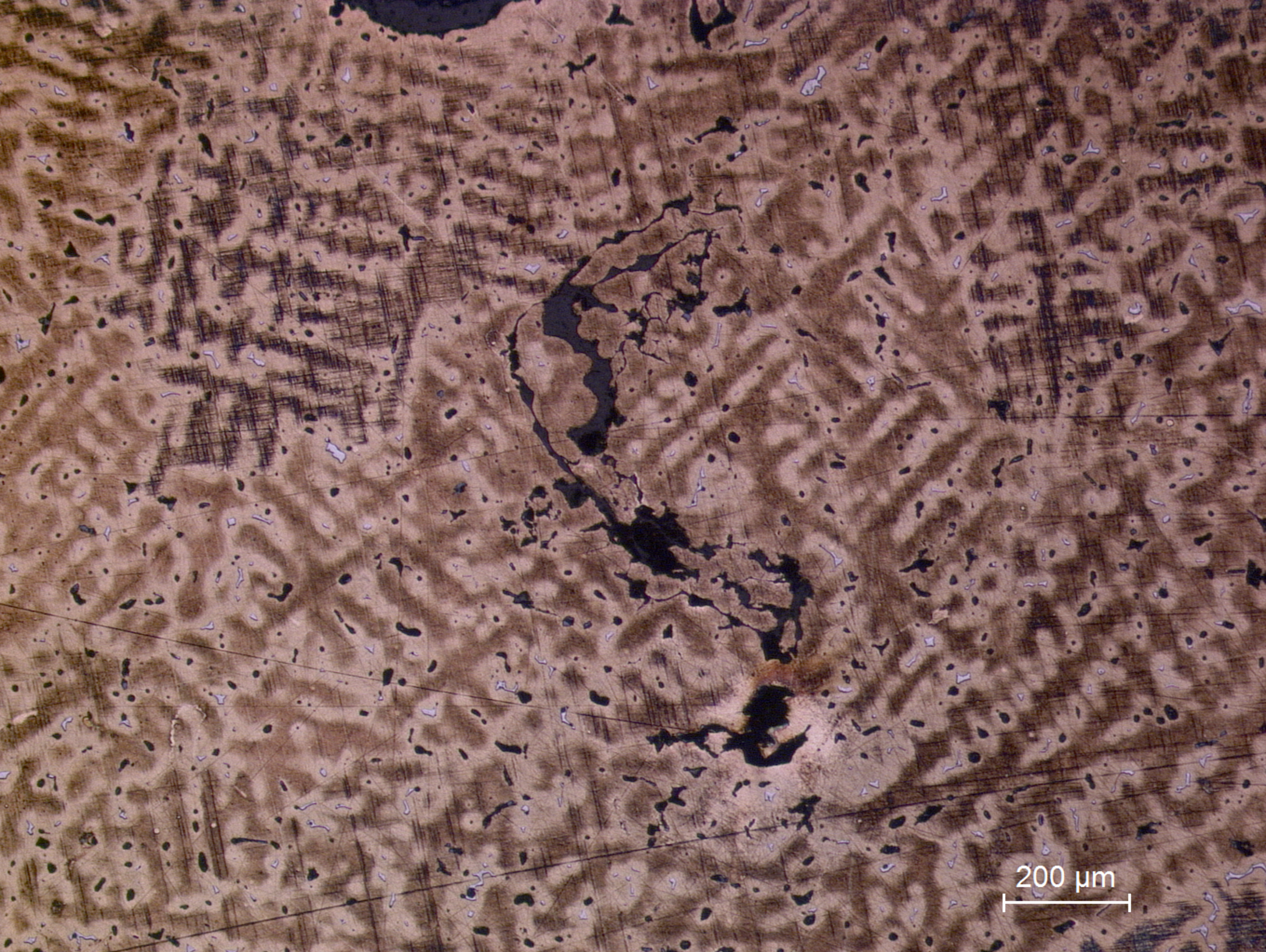


A135.3



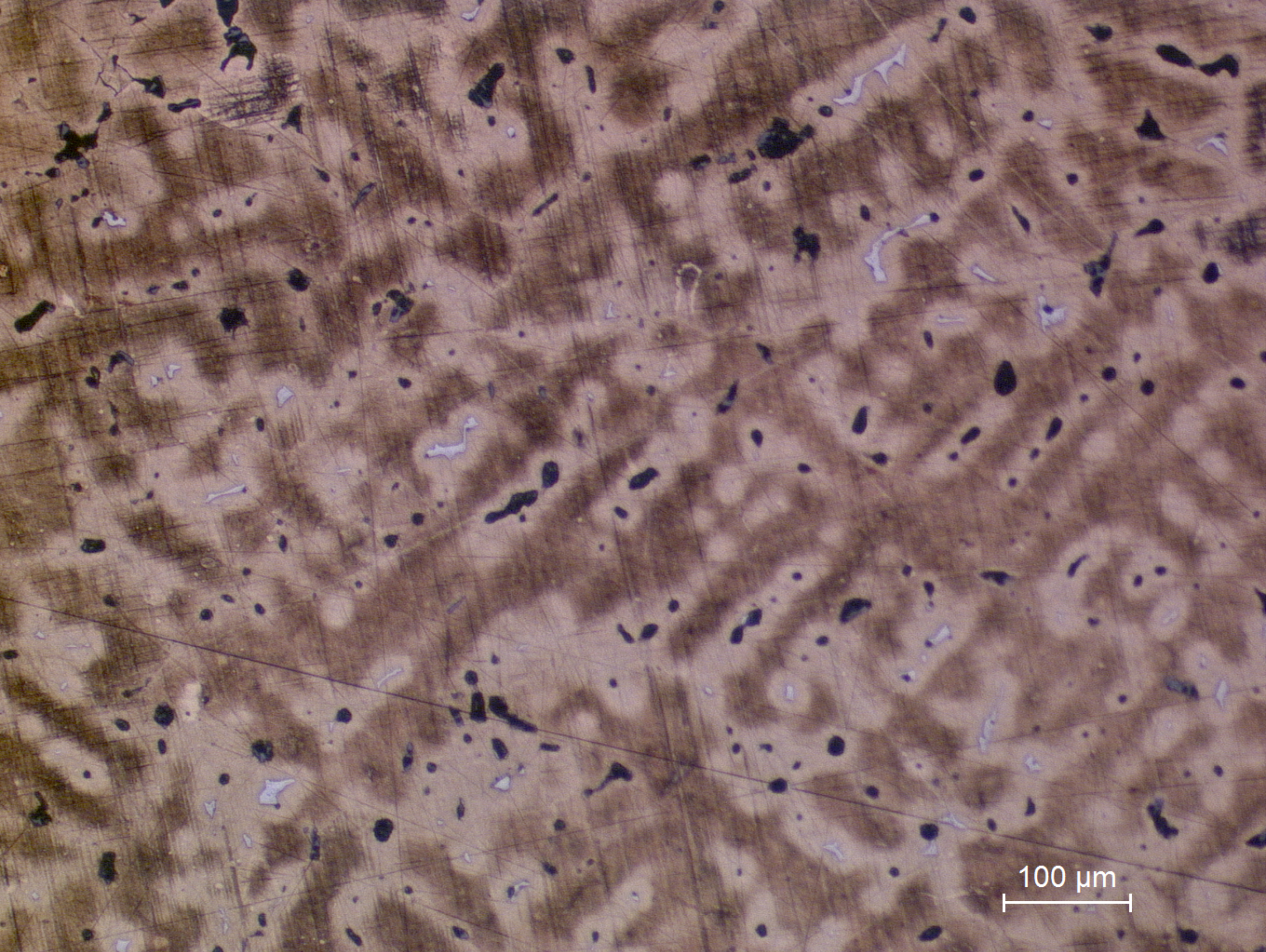
200 μm

A135.1
General view, showing inclusions and shrinkage voids. The large size of primary dendrites indicates a slow cooling rate.



200 μm

A135.2
Almost the same view as A135.1, after etching: showing dendrites with a high degree of microsegregation (coring); the interdendritic structure is eutectoid and contains impurities (Zn, S detected). (etching solution: aqueous FeCl_3).



100 μm

A135.3
Detail, showing evidence of coring and the location of small areas of eutectoid phases (blue grey) together with sulphide inclusions (etchant: aqueous FeCl_3).