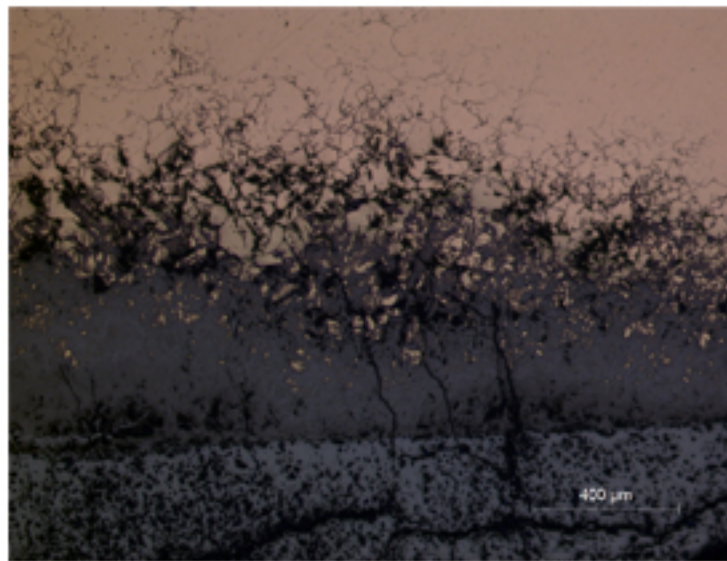
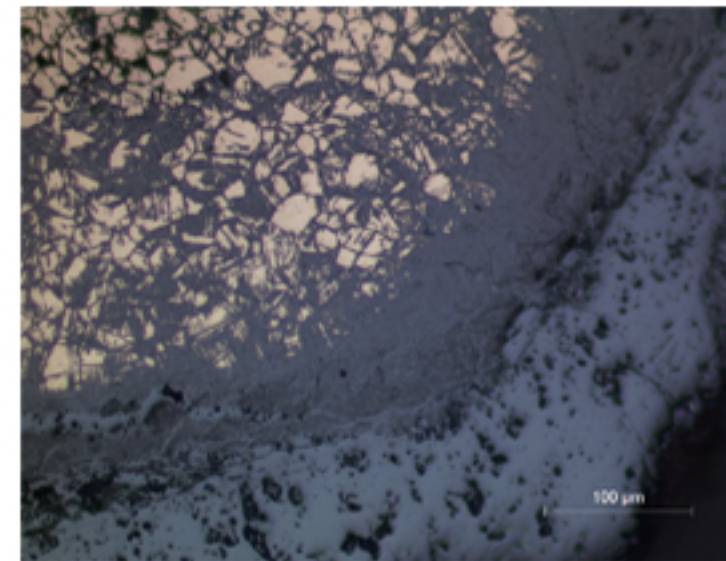


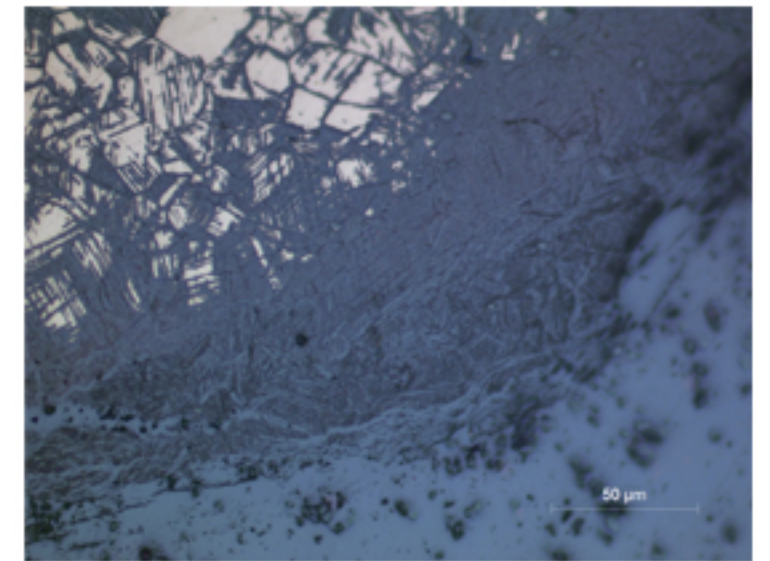
## A159 - FRAGMENT OF BELL



A159.1



A159.2



A159.3

### Identification

**Sample:** A159  
**Card reference:** C13  
**Origin:** Gallo Roman  
**Location:** n/a

### Description

Original surface (epidermis) clearly visible. Considerable interior corrosion; thick layer of cuprite on the external surface with embedded carbonate.

### Figure captions

A159.1

General view near the surface in which can be seen the metallic core in the upper part (white); a zone of progressive corrosion towards the bottom; the original surface (straight line); and the outer part of corrosion products.

A159.2

Detail showing the different structures of the corrosion products inside and outside the epidermis.

A159.3

Detail to show flow and strain lines in the inner side of the corrosion products.

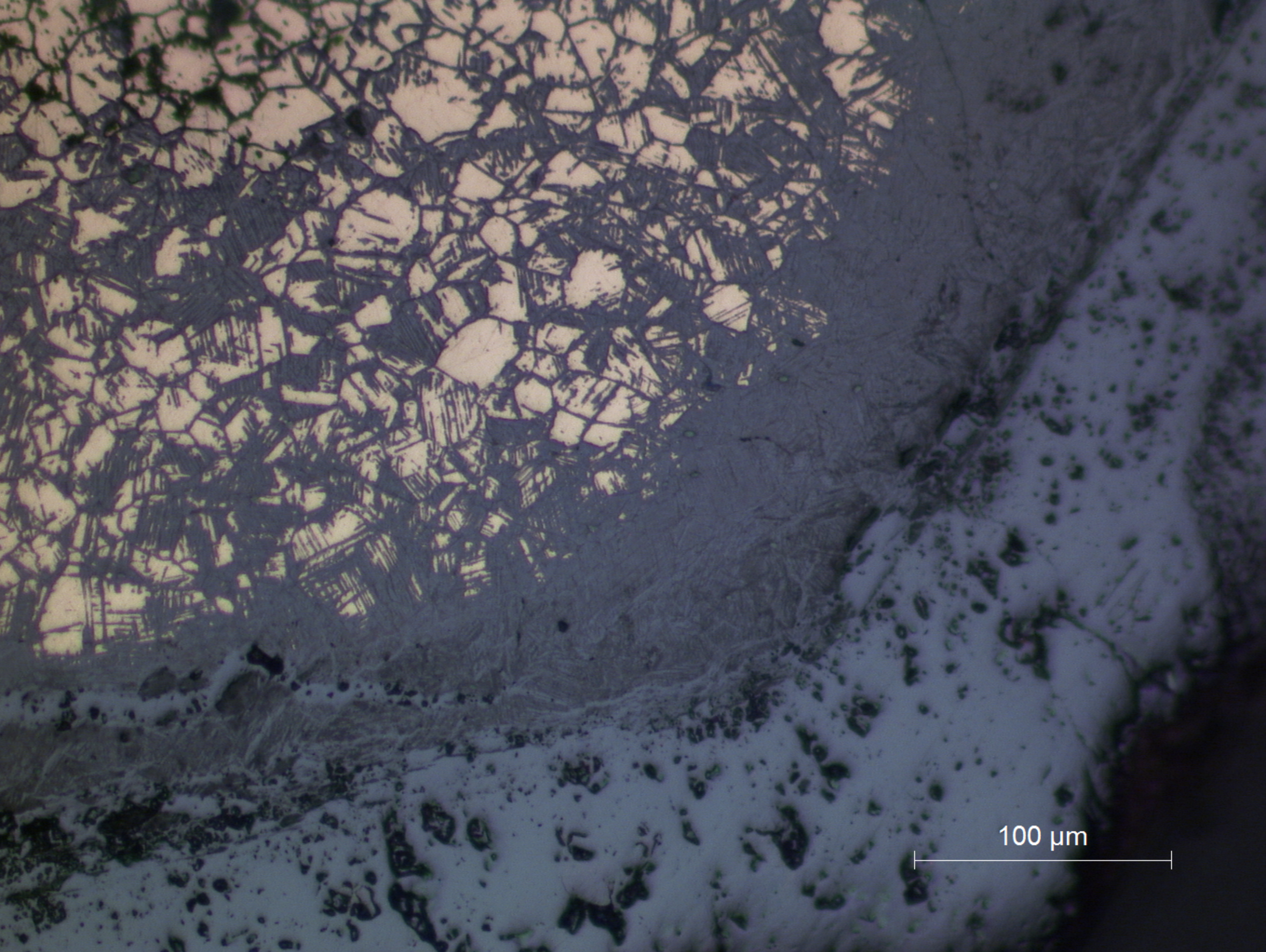




400 μm

**A159.1**  
General view near the surface in which can be seen the metallic core in the upper part (white); a zone of progressive corrosion towards the bottom; the original surface (straight line); and the outer part of corrosion products.





100 μm

**A159.2**  
Detail showing the different structures of the corrosion products inside and outside the epidermis.





50 μm

**A159.3**  
Detail to show flow and strain lines in the inner side of the corrosion products.