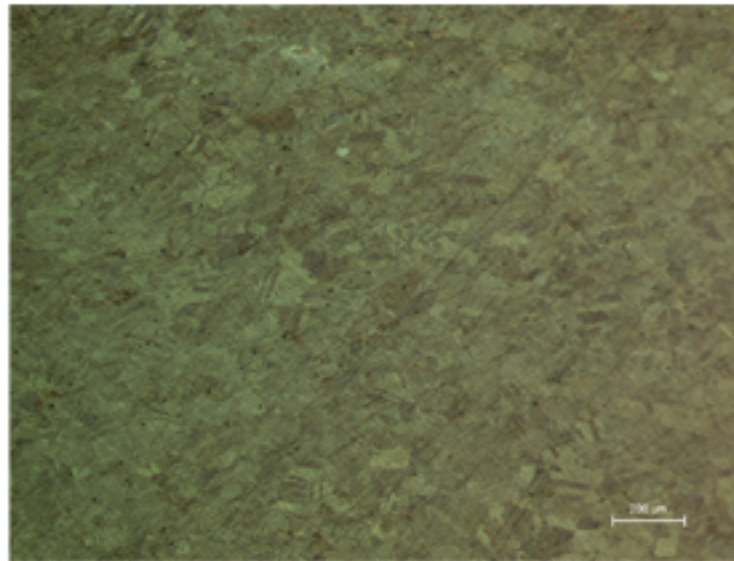


## A182 - ROMAN COIN



A182.1

### Identification

**Sample:** A182  
**Card reference:** S82  
**Origin:** n/a  
**Location:** n/a

### Description

Shiny olive-green patina; Cu-Zn alloy; grain elongation in the direction of pouring.

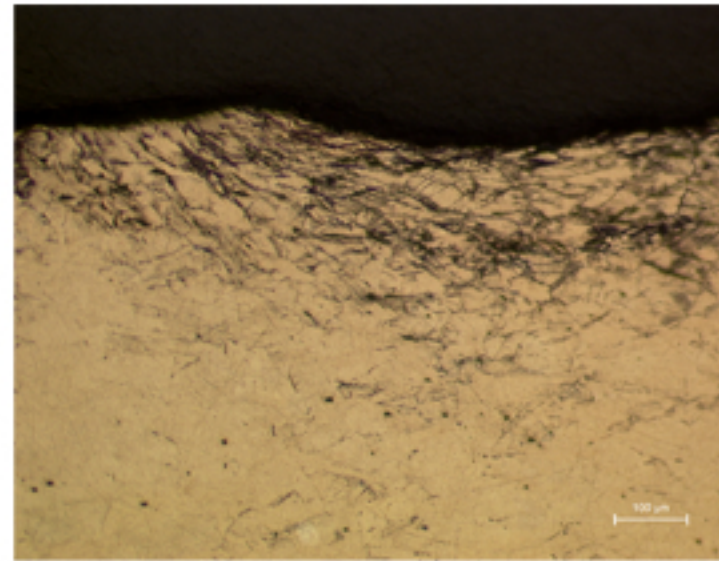
### Figure captions

A182.1

General view; recrystallized grains with annealing twins and deformed grains (etchant: aqueous  $\text{FeCl}_3$ ).

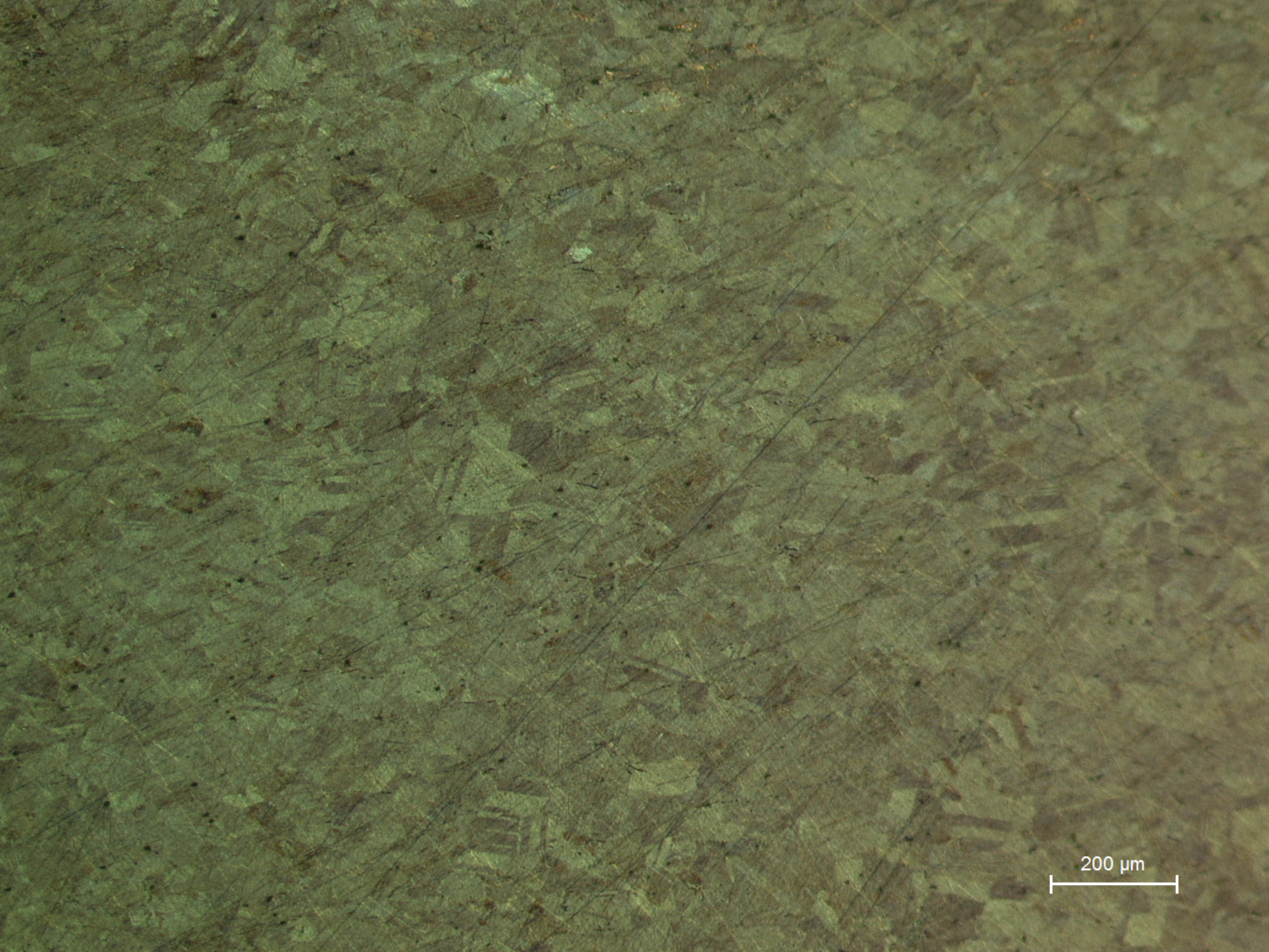
A182.2

Detail showing heavily deformed grains in some regions of the surface, corrosion reveals strain lines due to mechanical deformation (etchant: aqueous  $\text{FeCl}_3$ ).



A182.2

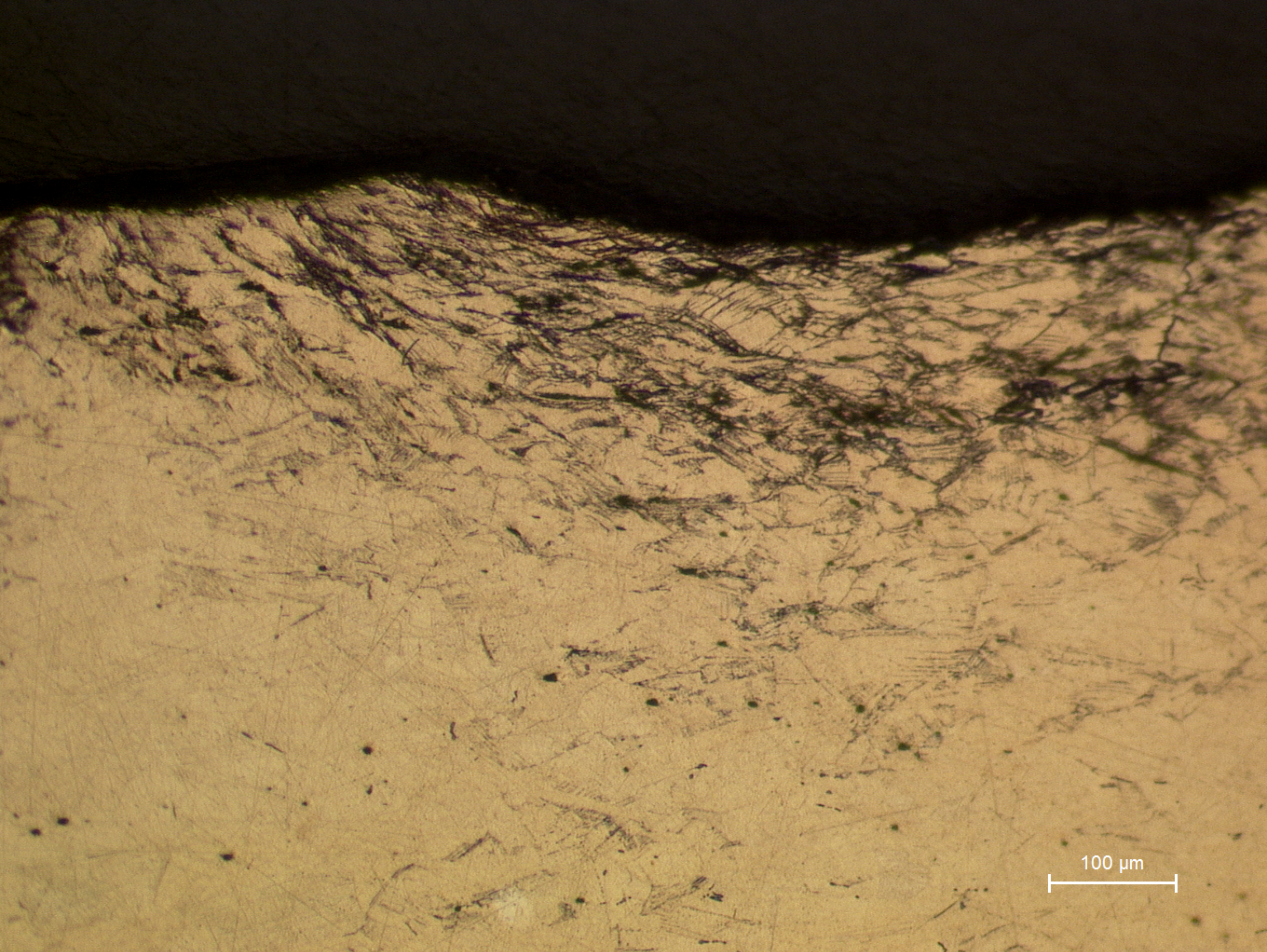




200 μm

**A182.1**  
General view; recrystallized grains with annealing twins and deformed grains (etchant: aqueous  $\text{FeCl}_3$ ).





100 μm

**A182.2**  
Detail showing heavily deformed grains in some regions of the surface, corrosion reveals strain lines due to mechanical deformation (etchant: aqueous  $\text{FeCl}_3$ ).