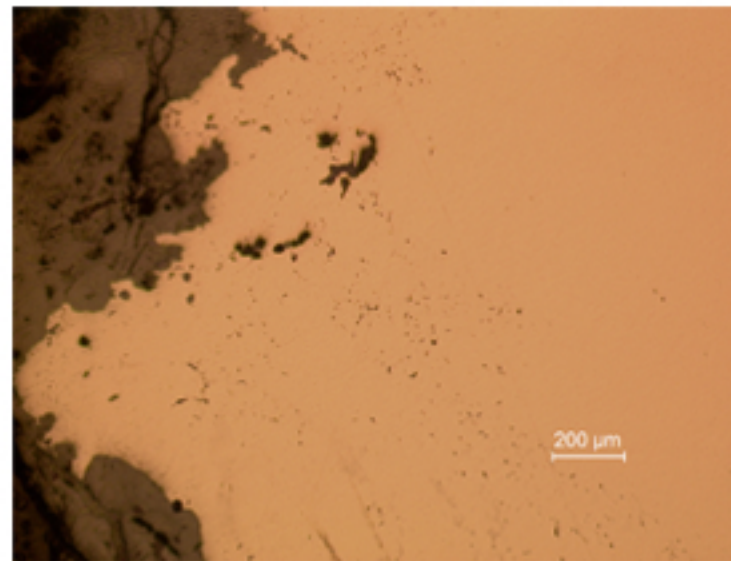
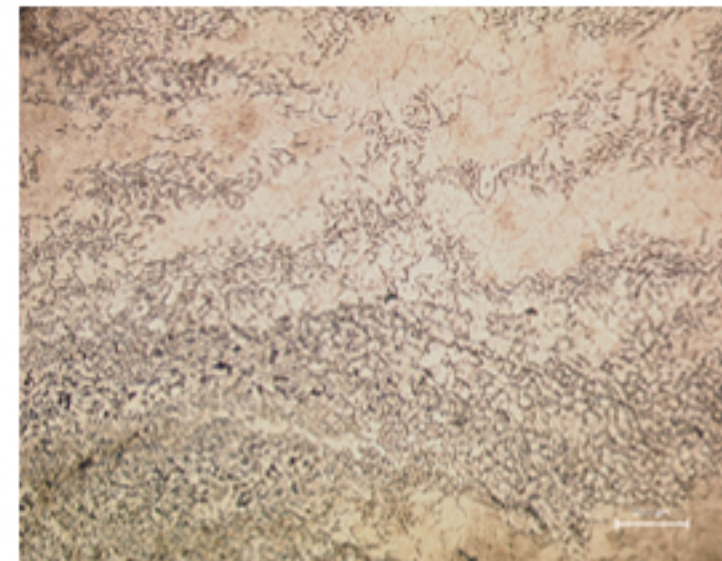


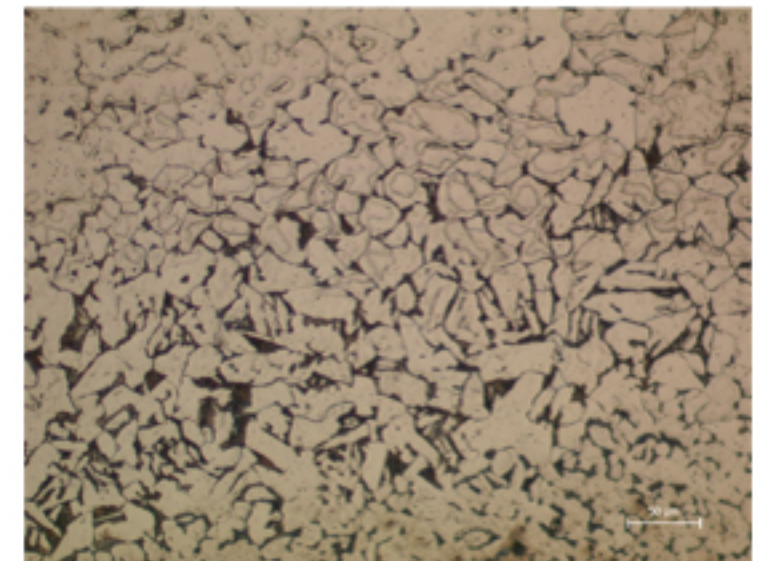
A185 - IRON FIBULA



A185.1



A185.2



A185.3

Identification

Sample: A185
Card reference: C25bis
Origin: Argus Vis
Location: n/a

Description

Penetration of corrosion into iron. Oxides are mixed with mineral matter from the ground.

Figure captions

A185.1

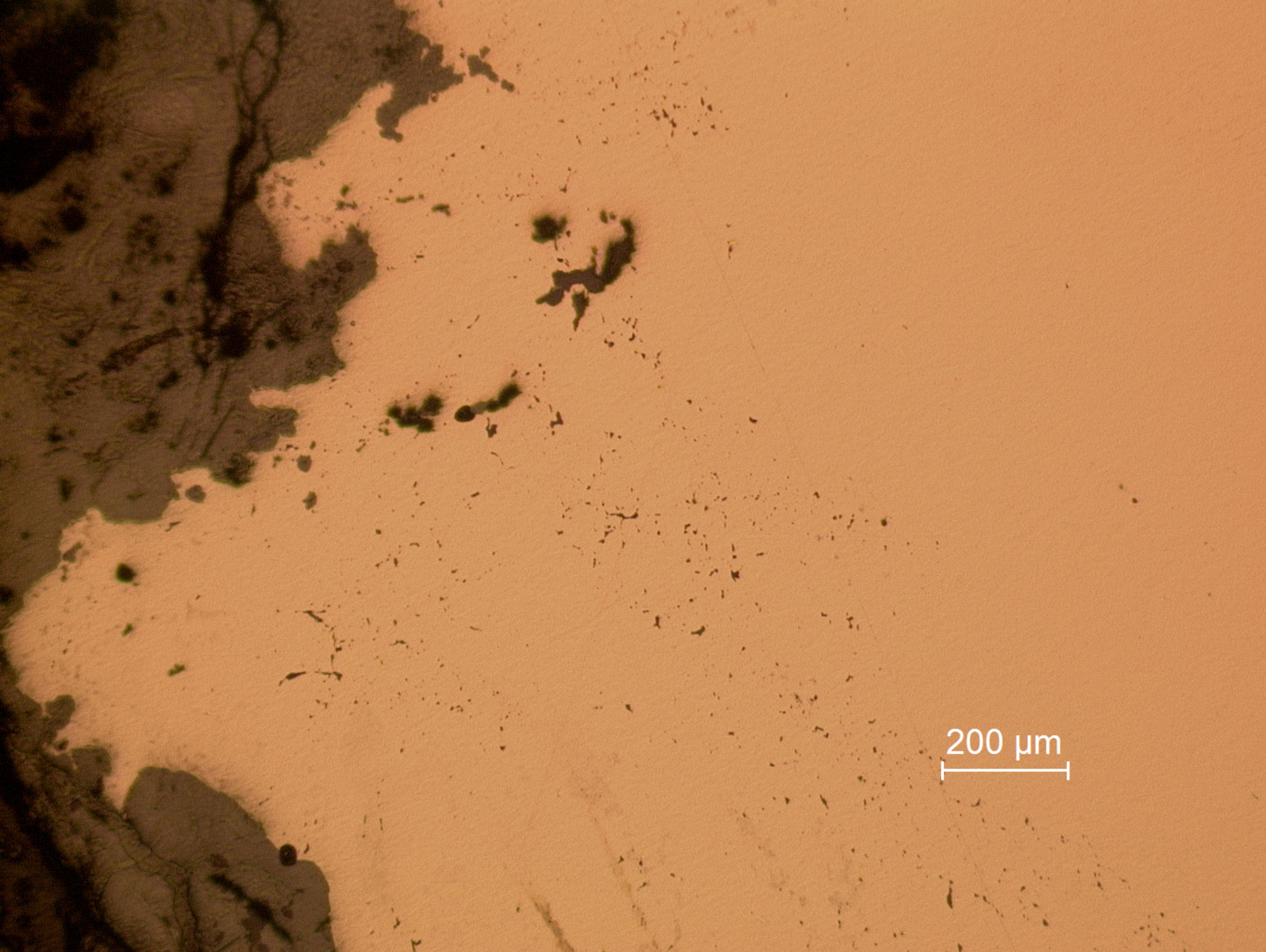
General view of surface region: impurities and pores along the grain boundaries.

A185.2

General view showing heterogeneous composition and grain size: some areas are constituted solely by large ferrite grains and others by smaller grains of ferrite + pearlite or cementite (etchant: Nital 4%).

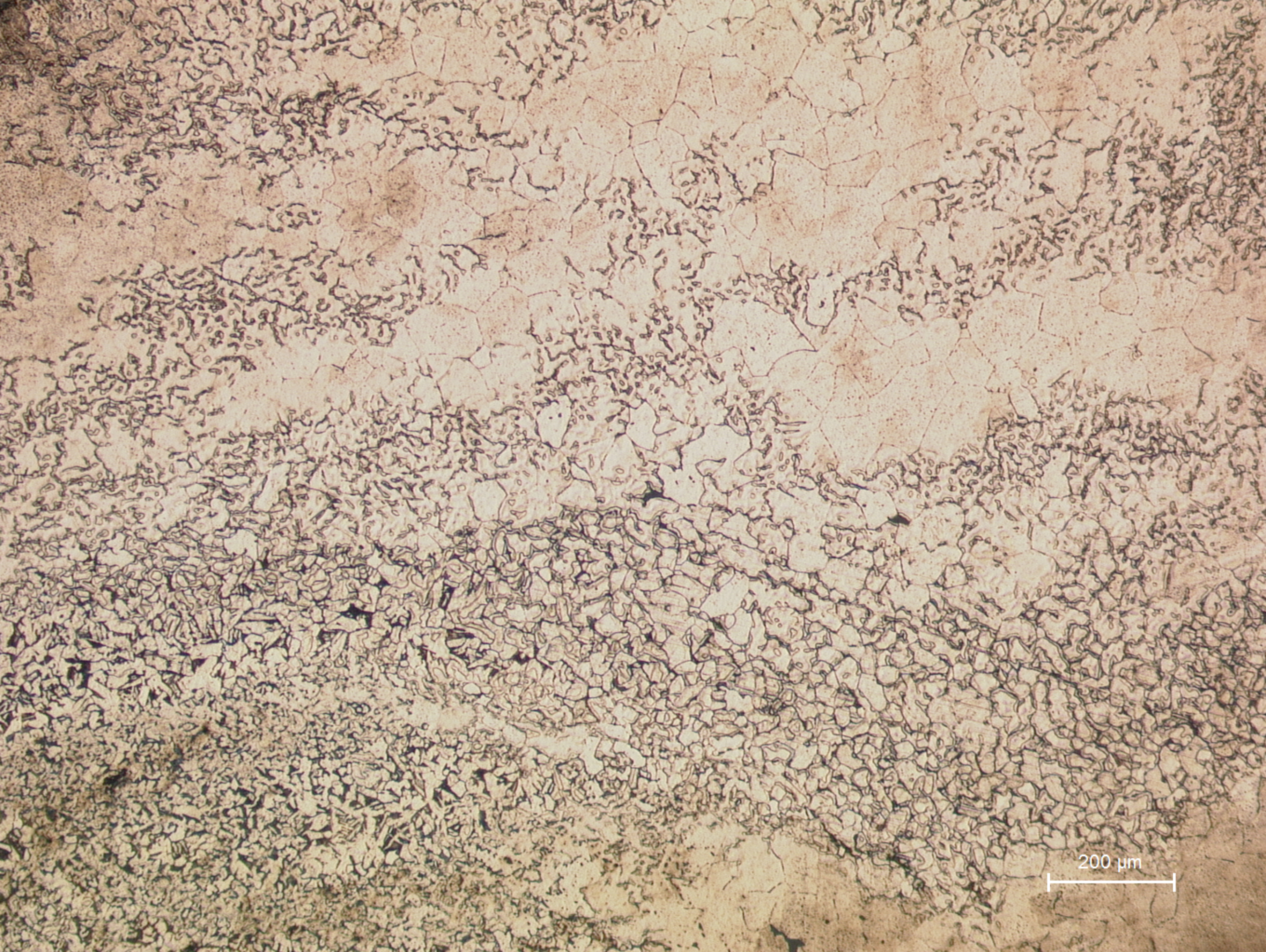
A185.3

Detail of an area with small grains showing pearlite agglomerates at the boundaries (etchant: Nital 4%).



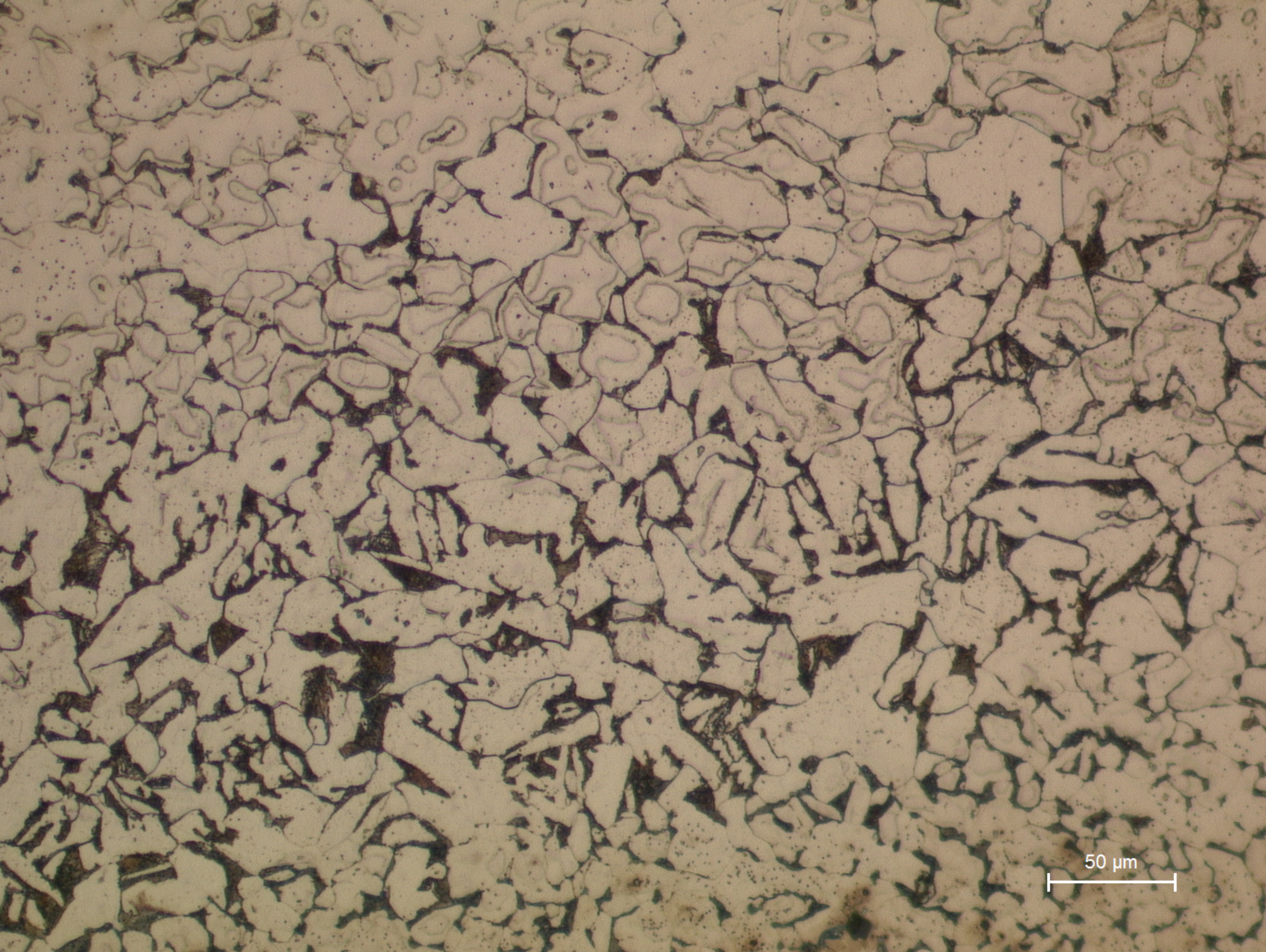
200 μm

A185.1
General view of surface region: impurities and pores along the grain boundaries.

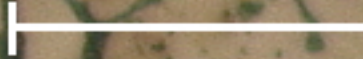


200 μm

A185.2
General view showing heterogeneous composition and grain size: some areas are constituted solely by large ferrite grains and others by smaller grains of ferrite + pearlite or cementite (etchant: Nital 4%).



50 μm



A185.3
Detail of an area with small grains showing pearlite agglomerates at the boundaries (etchant: Nital 4%).