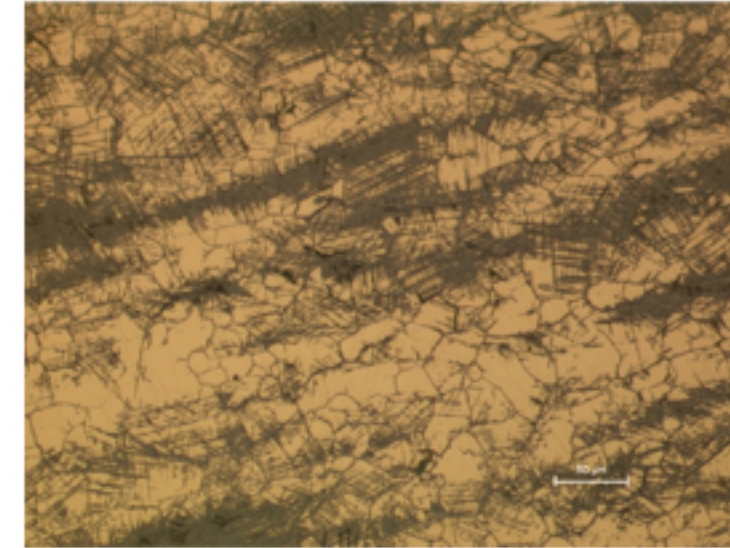
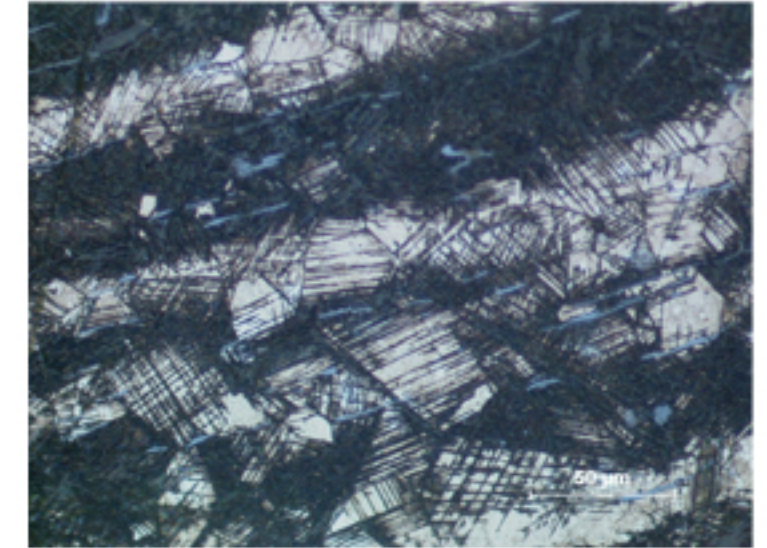


A35.1



A35.2



A35.3

### Identification

**Sample:** A35  
**Card reference:** C51  
**Origin:** Etruscan  
**Location:** Musée du Louvre n. 1744

### Description

Bronze rich in tin (aprox. 20%). The metal has been thinned by hammering, and annealed. This has given it the necessary curvature. Corrosion is seen to have followed the lines of forging, which have persisted because of inadequate heat treatment during fabrication.

### Figure captions

A35.1

General view showing heavy corrosion following flow lines.

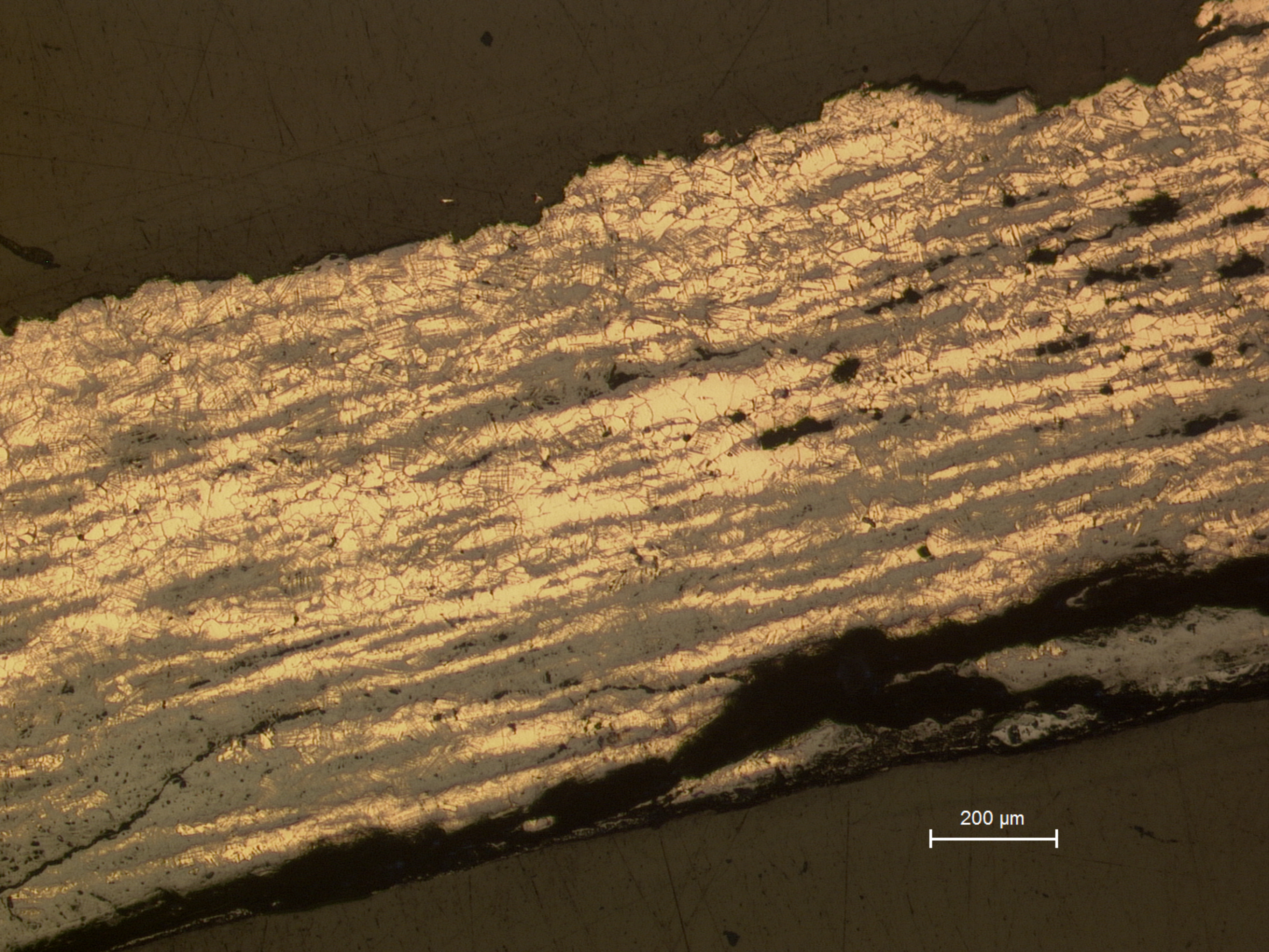
A35.2

Detail showing recrystallized grains; and intergranular and strain lines corrosion.

A35.3

Grey elongated inclusions (probably sulfide) are visible in the middle of corrosion products. They are heavily deformed but not strongly fragmented (etchant: aqueous  $\text{FeCl}_3$ ).

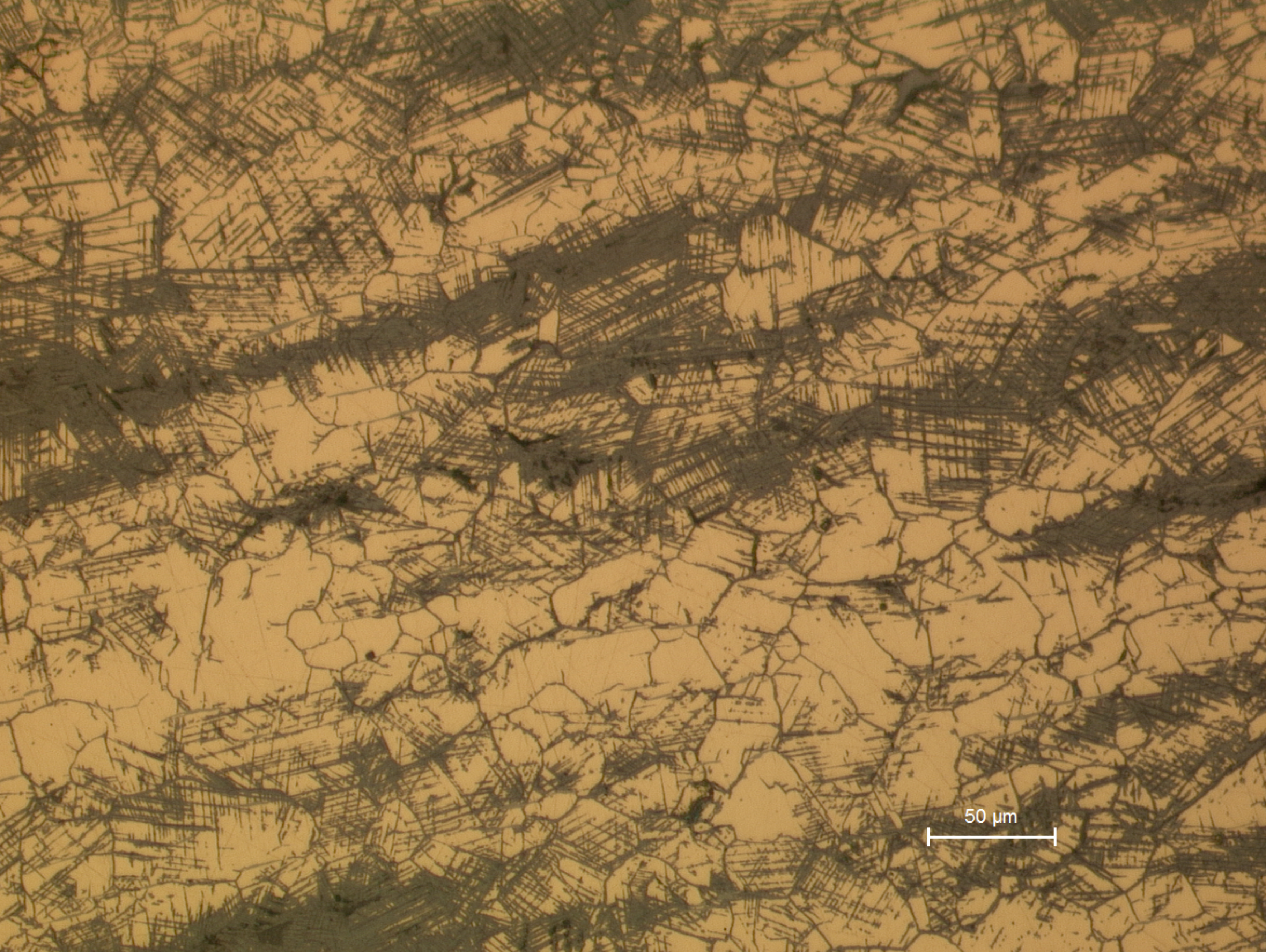




200 μm

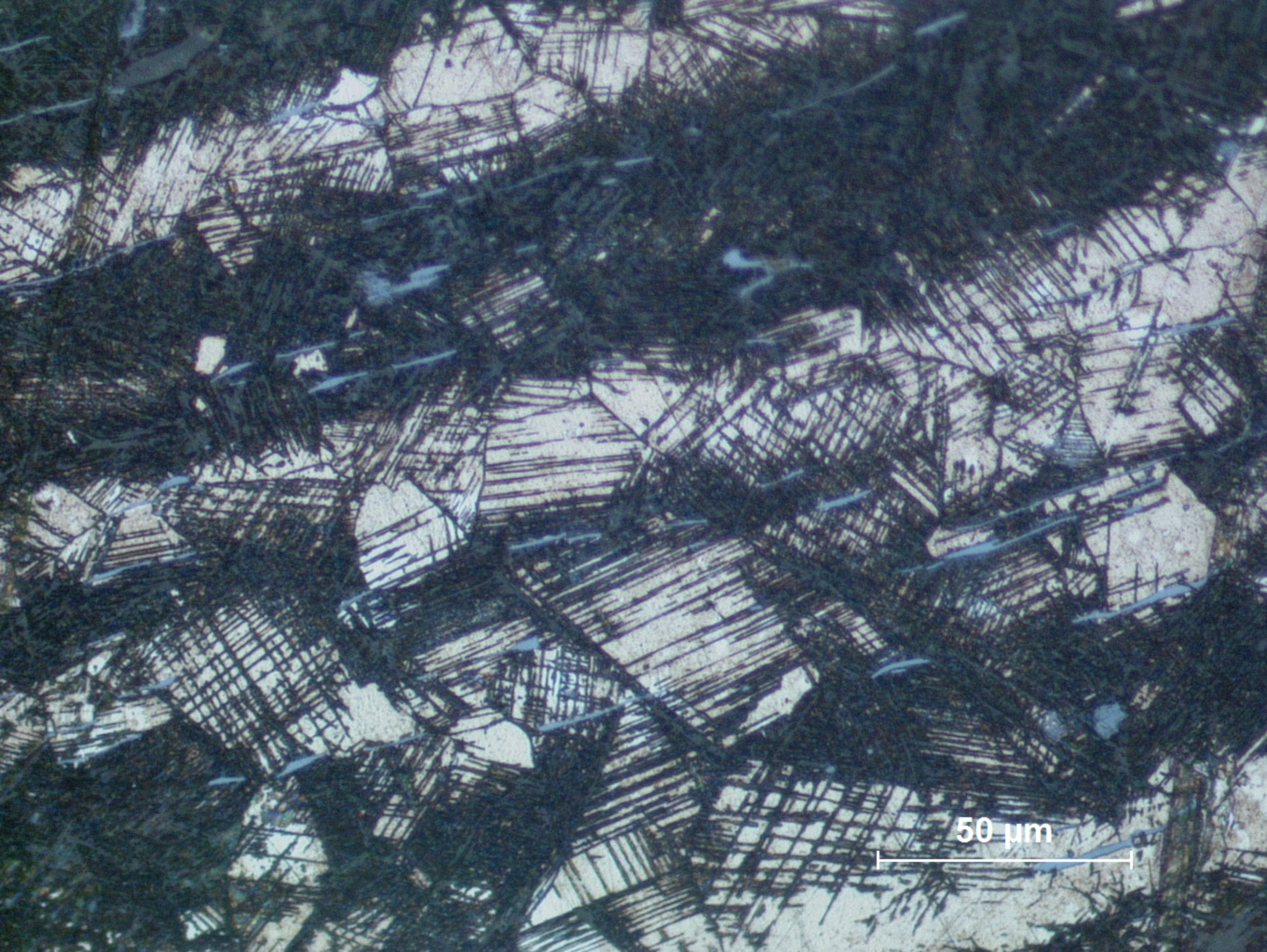
**A35.1**  
General view showing heavy corrosion following flow lines.





**A35.2**  
Detail showing recrystallized grains; and intergranular and strain lines corrosion.





50 μm

**A35.3**  
Grey elongated inclusions (probably sulfide) are visible in the middle of corrosion products. They are heavily deformed but not strongly fragmented (etchant: aqueous FeCl<sub>3</sub>).