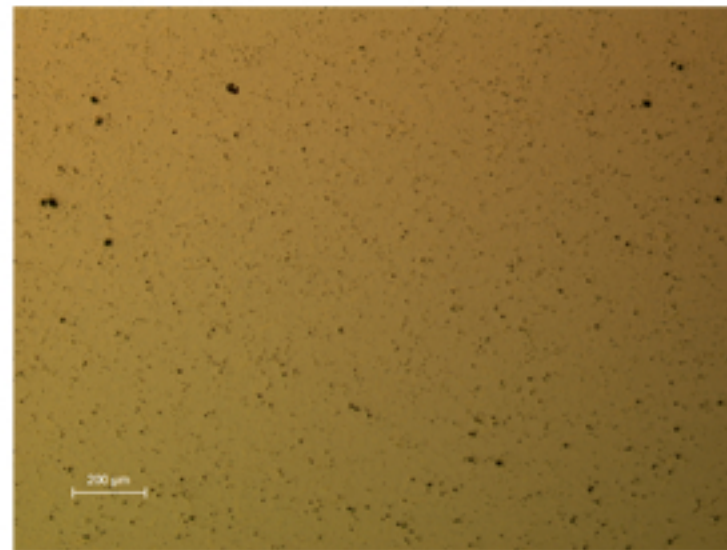


A41 - ROMAN MIRROR



A41.1

Identification

Sample: A41
Card reference: S93
Origin: Italy
Location: Musée du Louvre n. 1851

Description

White metal: tin content exceeding 20%. The alloy is very hard (386-473 HV) and there is no surface tinning. This sample exhibits the structure of a bronze with a high tin content. A feature of the cast metal structure is the Sn-rich phase linked to the presence of eutectoid surrounding the primary Cu-rich phase dendrites.

Figure captions

A41.1

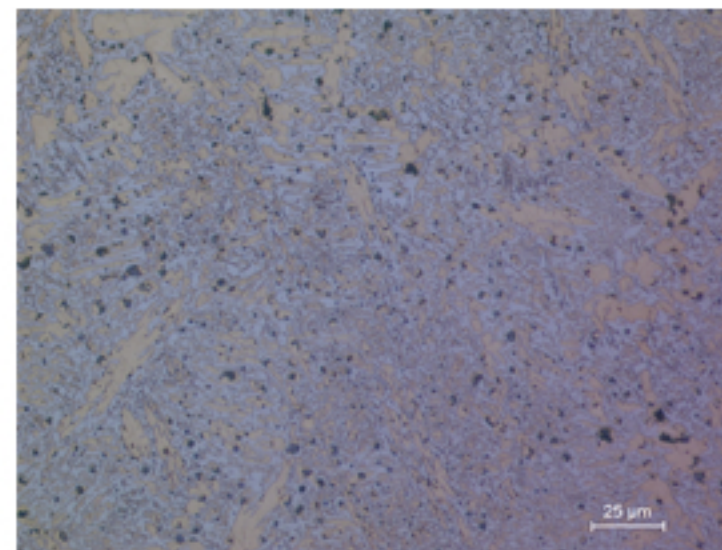
General view: small pores and inclusions are uniformly distributed in the matrix.

A41.2

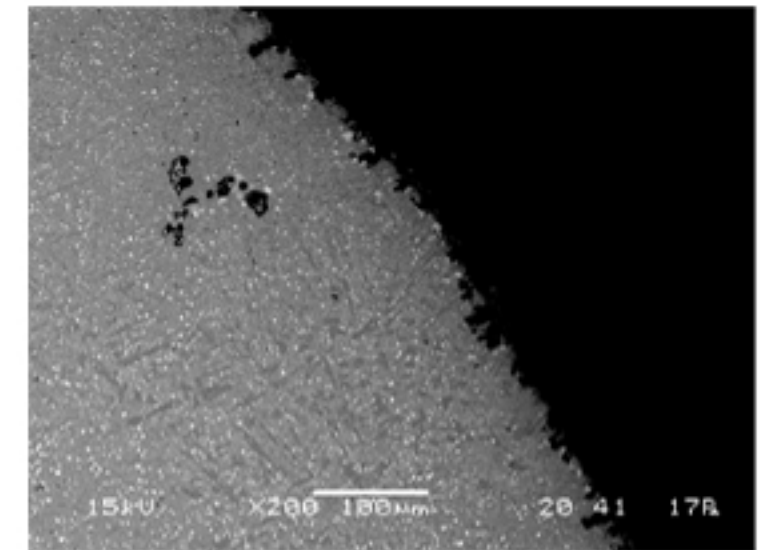
Detail: the structure shows a large amount of the Sn-rich phase (blue grey) surrounding the Cu-rich matrix phase (yellow); high quantity of lead inclusions (etchant: aqueous FeCl_3).

A41.3

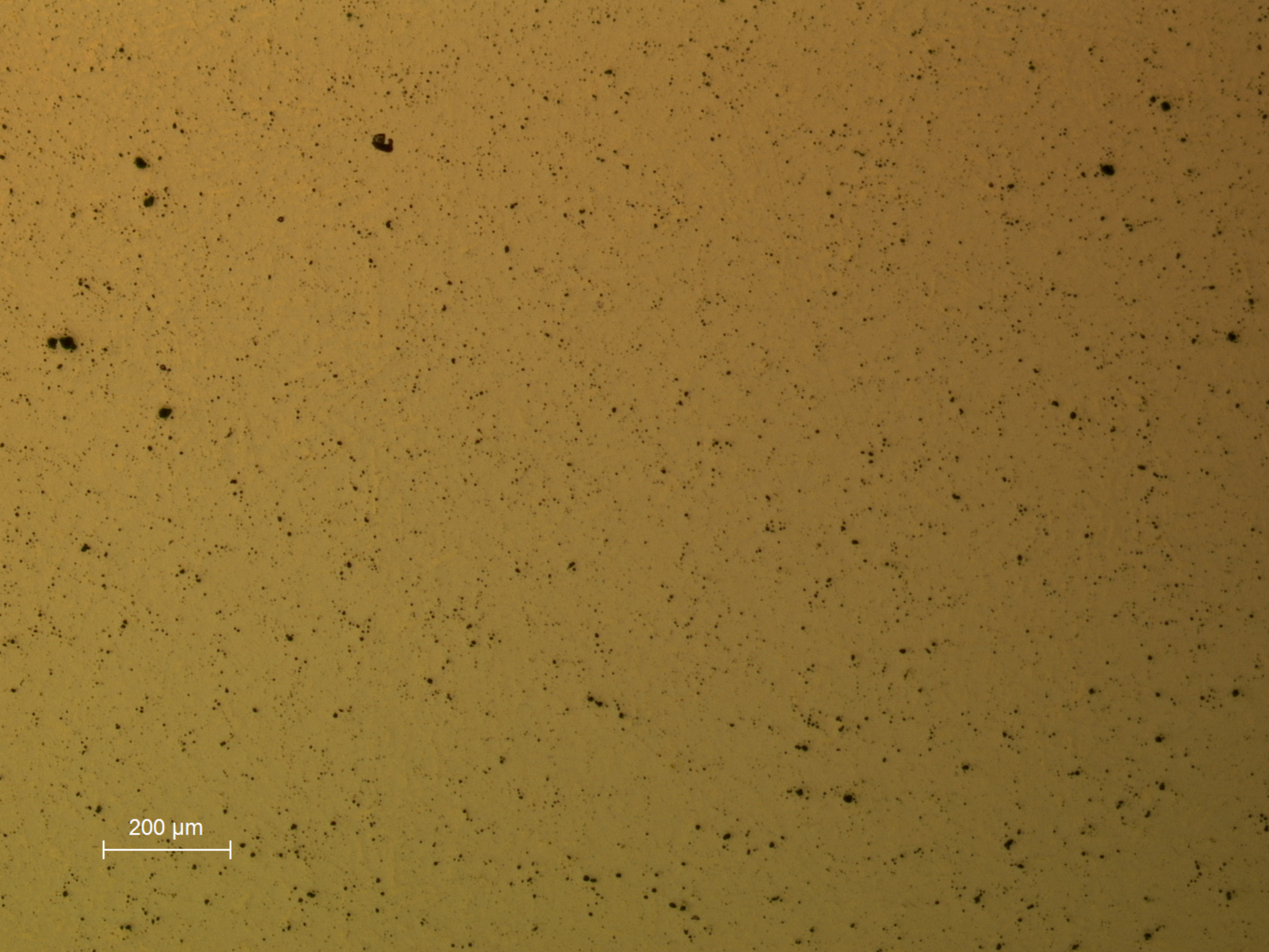
SEM image: the presence of lead inclusions can be seen (small white dots), which are immiscible in the bronze matrix.



A41.2

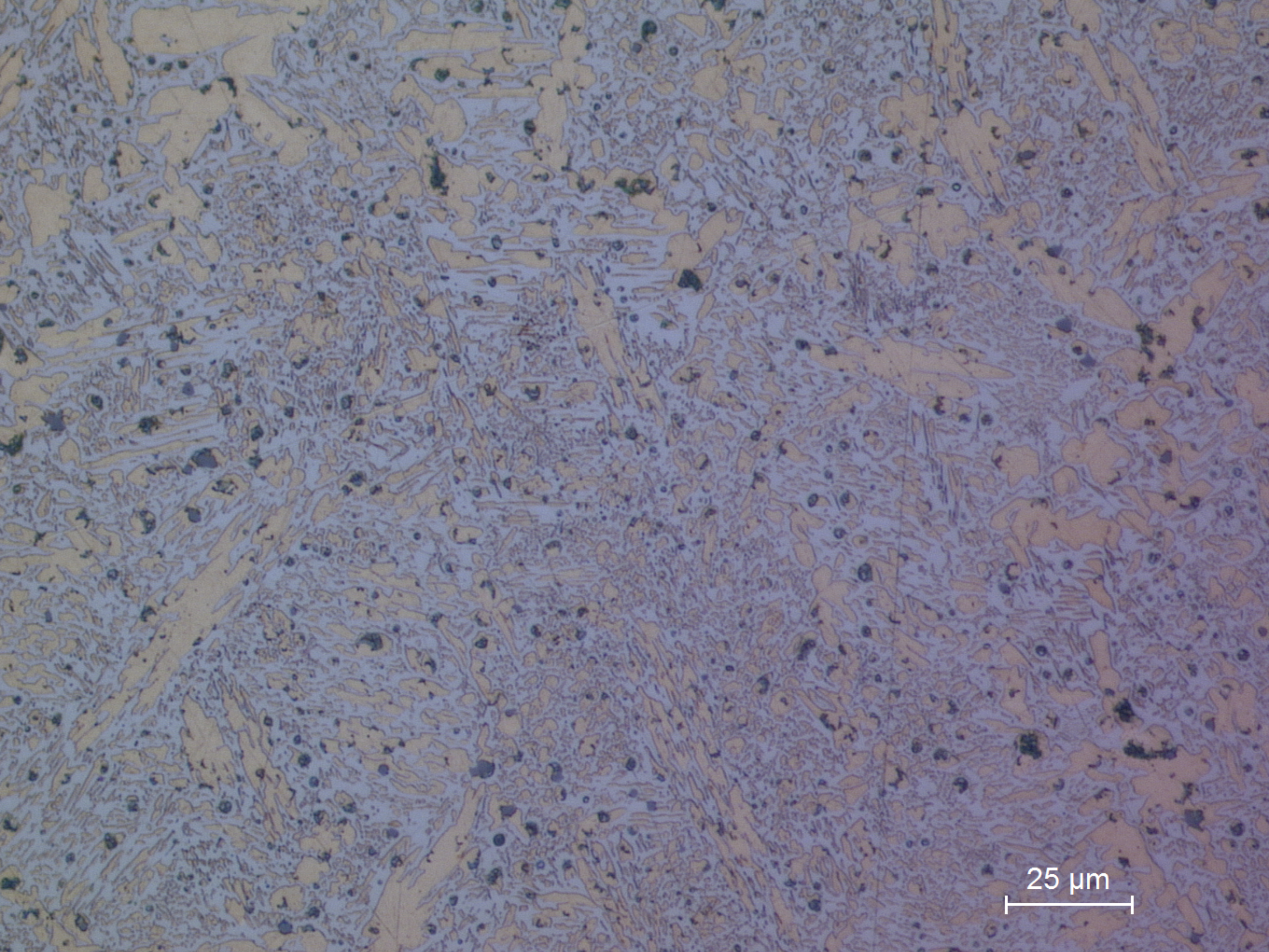


A42.3

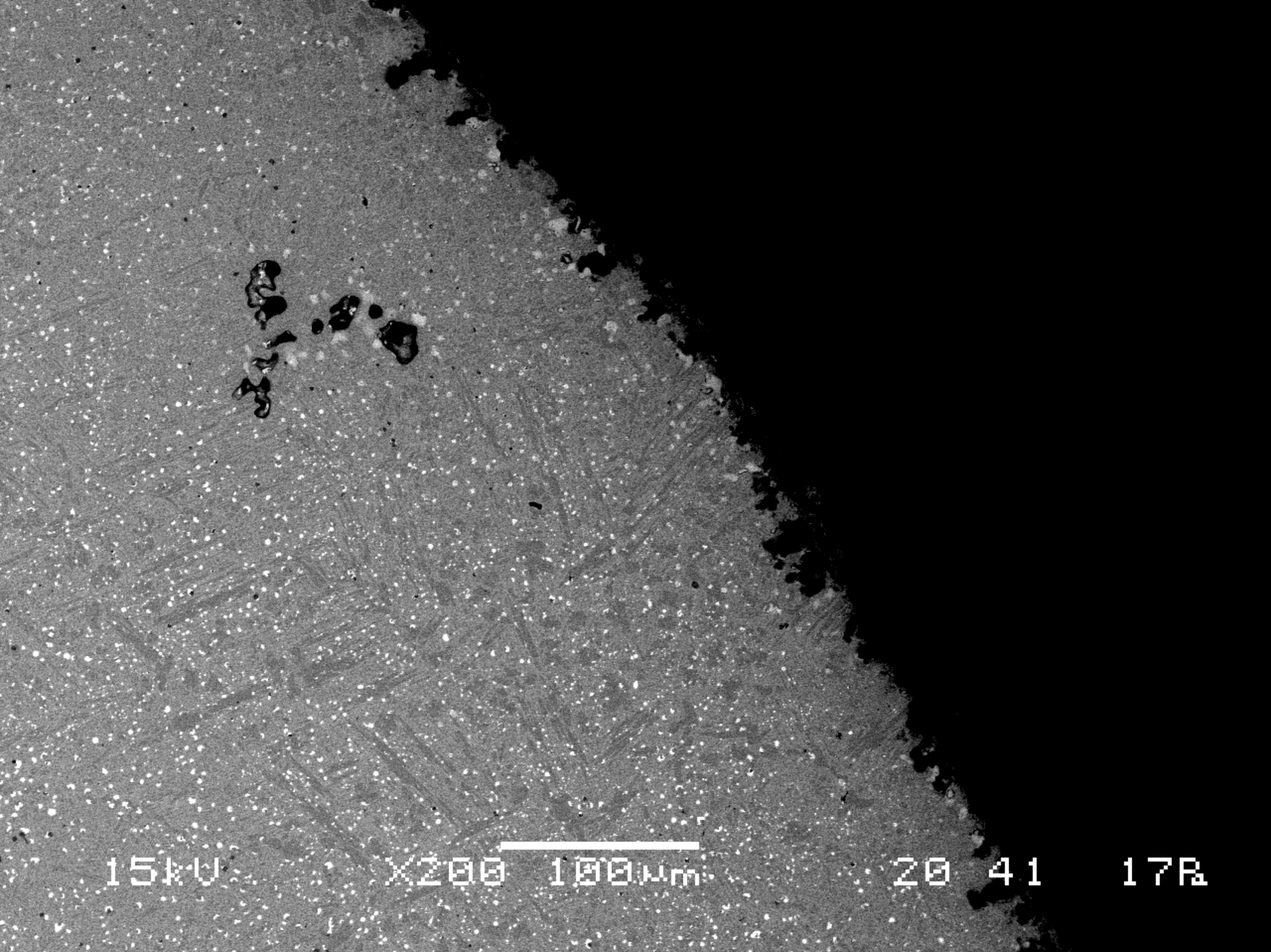


200 μm

A41.1
General view: small pores and inclusions are uniformly distributed in the matrix.



A41.2
Detail: the structure shows a large amount of the Sn-rich phase (blue grey) surrounding the Cu-rich matrix phase (yellow); high quantity of lead inclusions (etchant: aqueous FeCl_3).



A41.3
SEM image: the presence of lead inclusions can be seen (small white dots), which are immiscible in the bronze matrix.