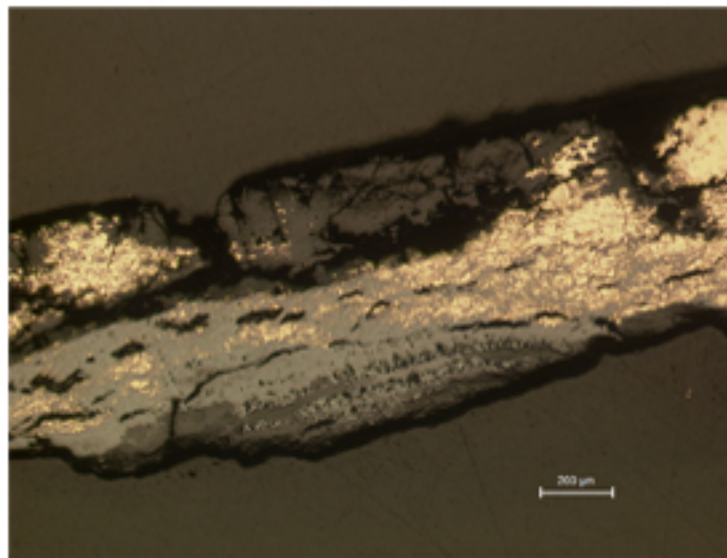
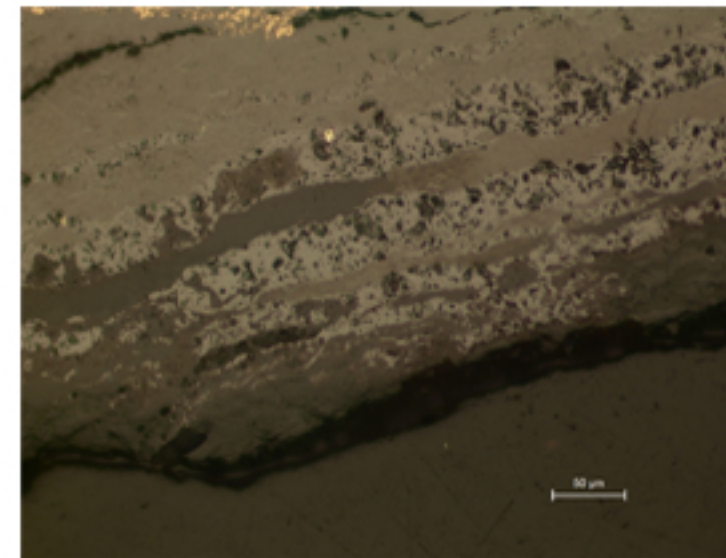


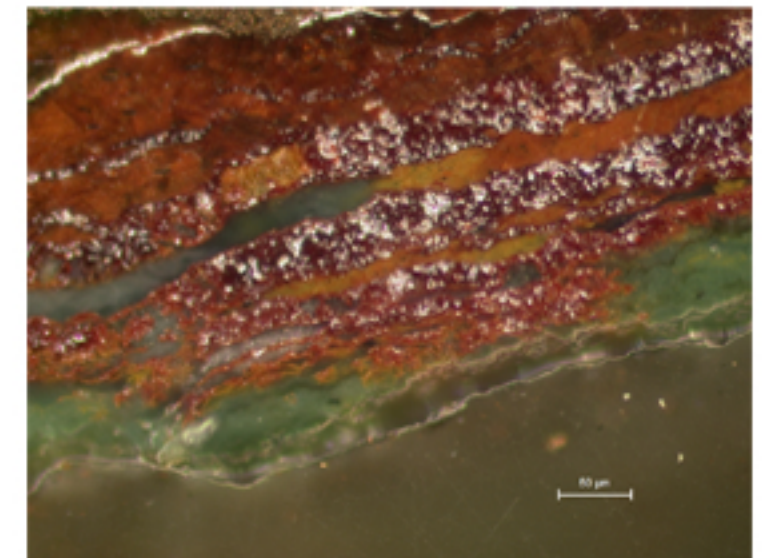
## A43 - MIRROR



A43.1



A43.2



A43.3

### Identification

**Sample:** A43  
**Card reference:** C57  
**Origin:** Etruria  
**Location:** Musée du Louvre n. 1769

### Description

**Tin rich alloy (15-20%), hardness 257 HV. Stratified corrosion structure, alternating cuprite and malachite layers.**

### Figure captions

A43.1

General view of a heavily corroded area; corrosion exacerbates residual stresses.

A43.2

Detail of the corrosion layers (bottom part of A43.1).

A43.3

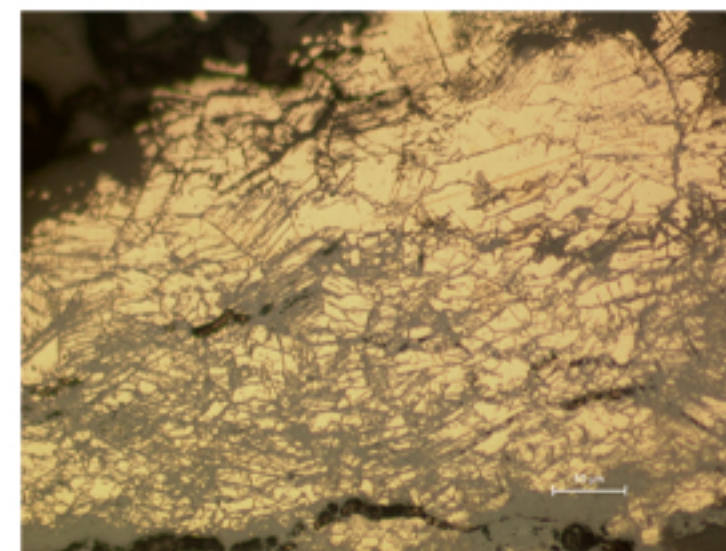
Same as A43.2, viewed under polarized light.

A43.4

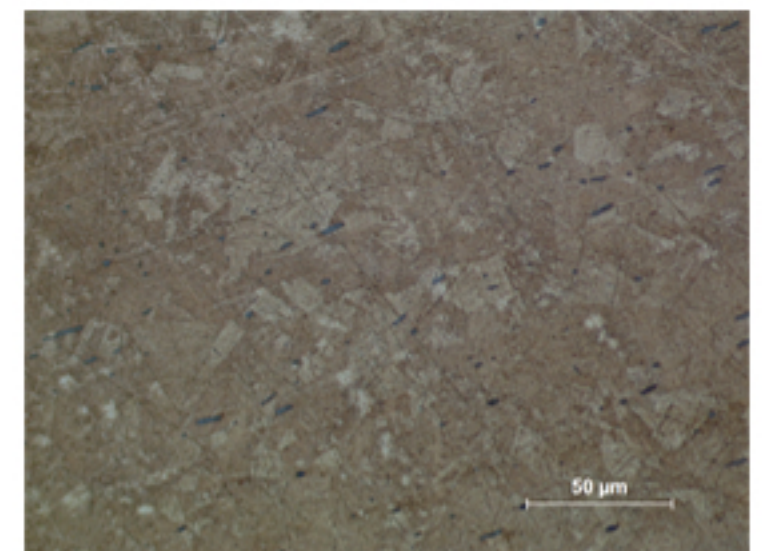
Detail: severe intergranular and strain lines corrosion (right hand side of A43.1).

A43.5

Detail: polygonal grains of irregular sizes presenting annealing twins; many elongated sulfide inclusions (etchant: aqueous  $\text{FeCl}_3$ ; viewed under polarized light).

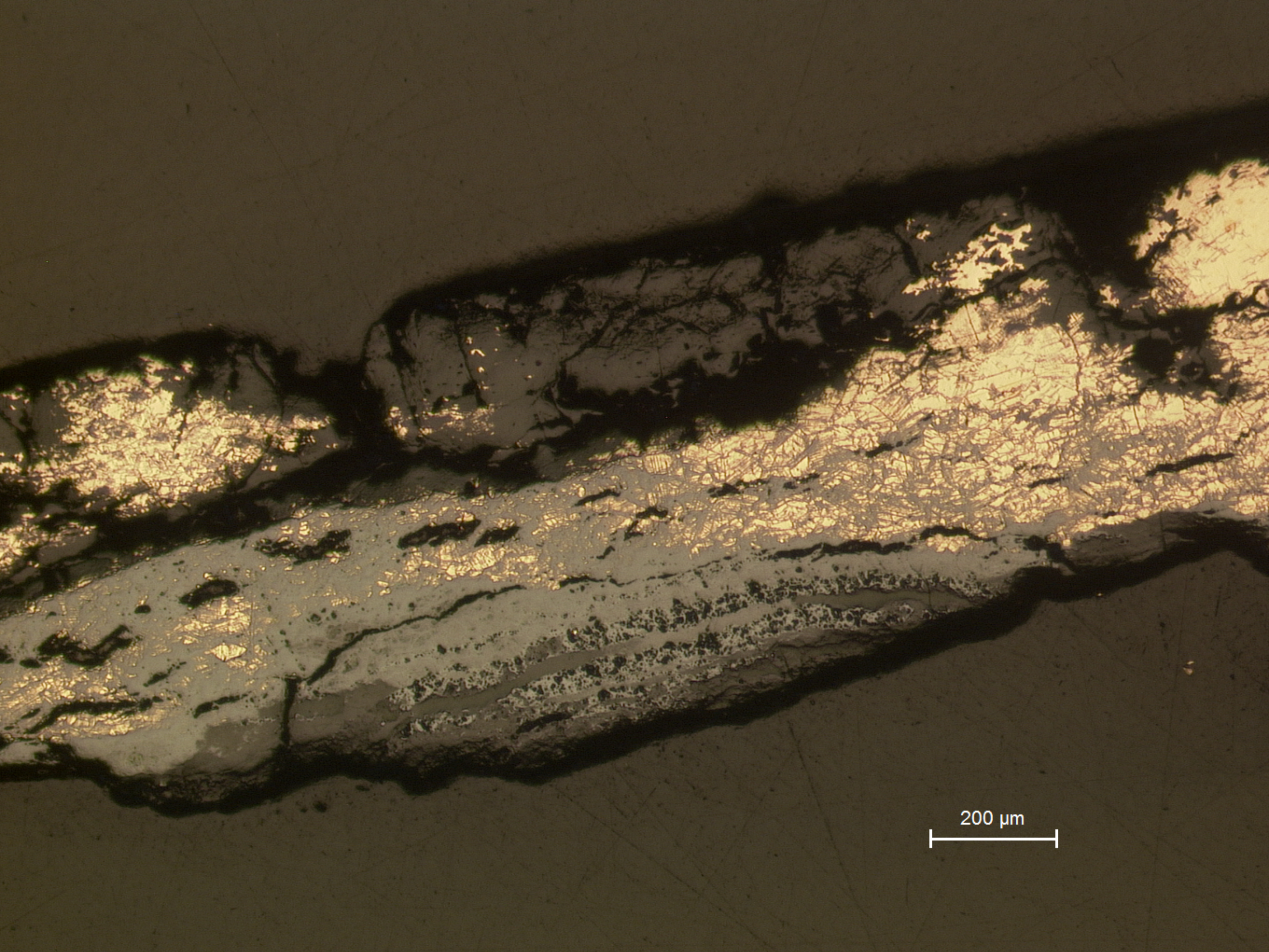


A43.4



A43.5

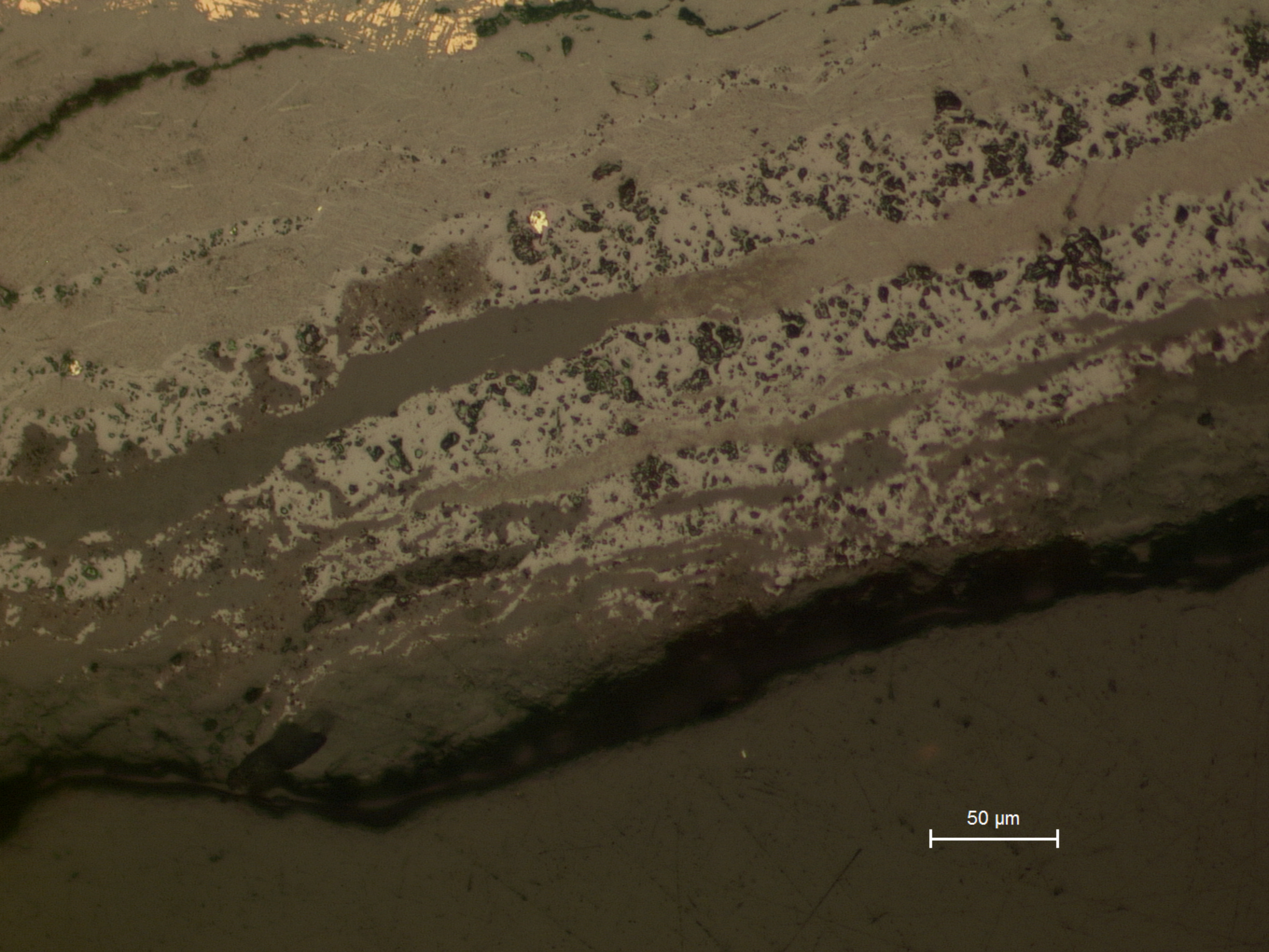




200 μm

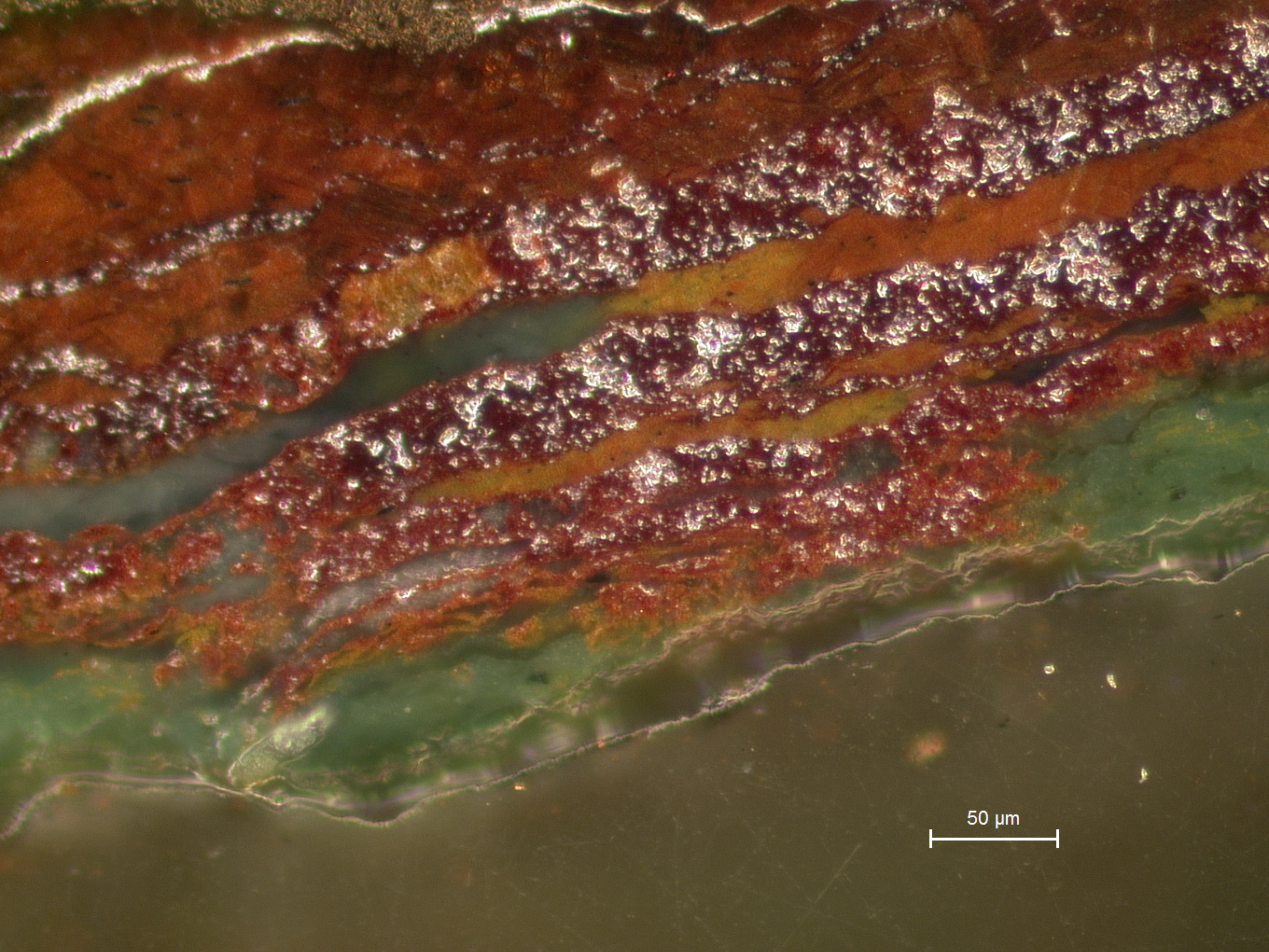
**A43.1**  
General view of a heavily corroded area; corrosion exacerbates residual stresses.





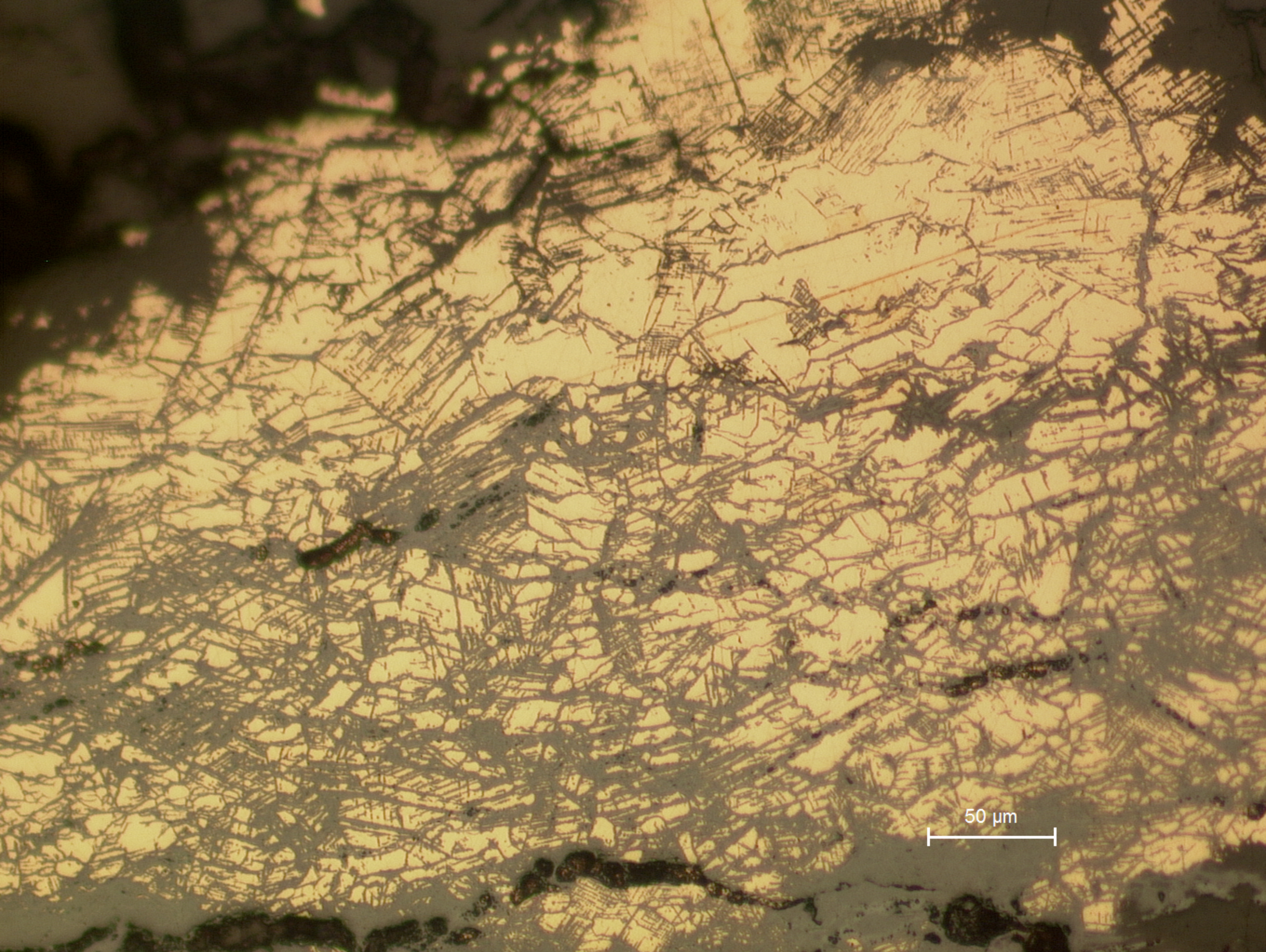
A43.2  
Detail of the corrosion layers (bottom part of A43.1).





**A43.3**  
Same as A43.2, viewed under polarized light.

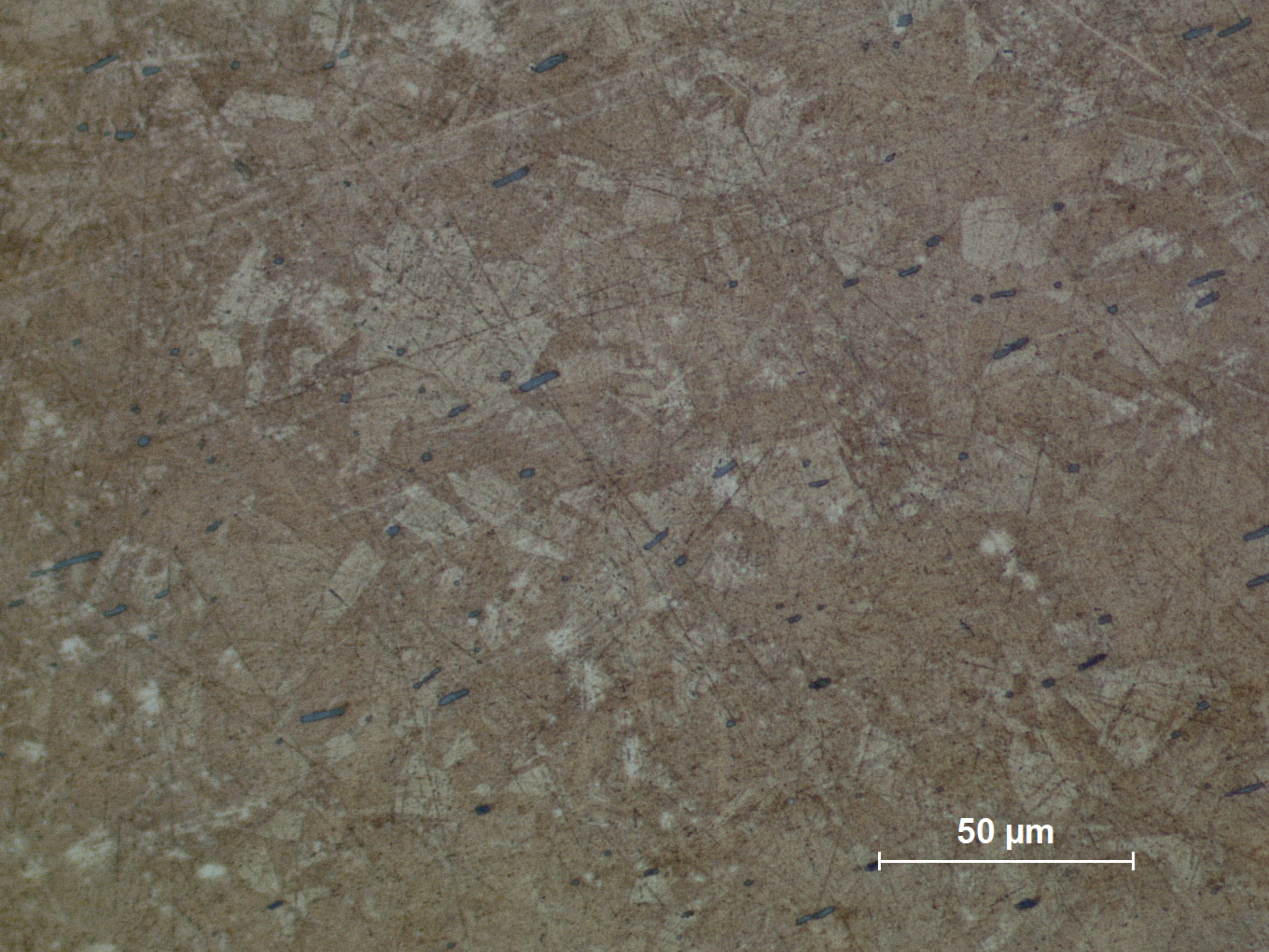




50  $\mu\text{m}$

**A43.4**  
Detail: severe intergranular and strain lines corrosion (right hand side of A43.1).





50 μm

A43.5  
Detail: polygonal grains of irregular sizes presenting annealing twins; many elongated sulfide inclusions (etchant: aqueous  $\text{FeCl}_3$ ; viewed under polarized light).