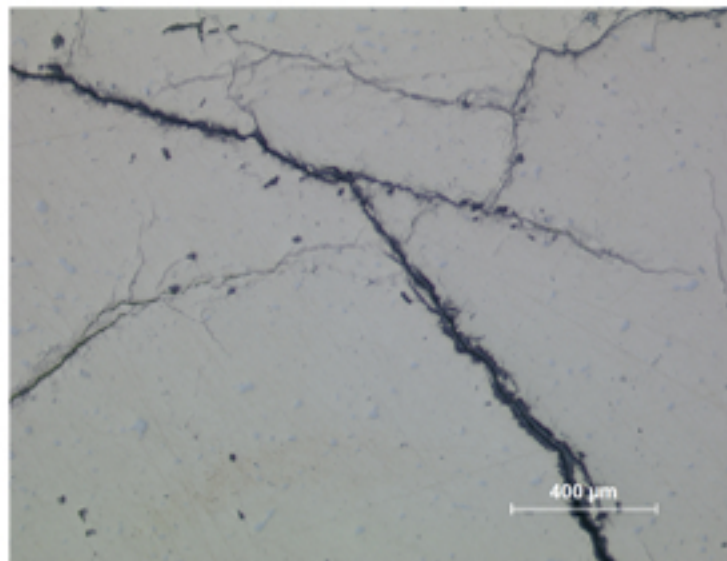


## A46 - MIRROR



A46.1

### Identification

**Sample:** A46  
**Card reference:** C50  
**Origin:** Etruria  
**Location:** Musée du Louvre n. 6825

### Description

Bronze with a high tin content (about 20%).  
Several transcrystalline cracks, characteristic of Sn-rich bronzes.

### Figure captions

A46.1

General view showing transgranular cracks with corrosion.

A46.2

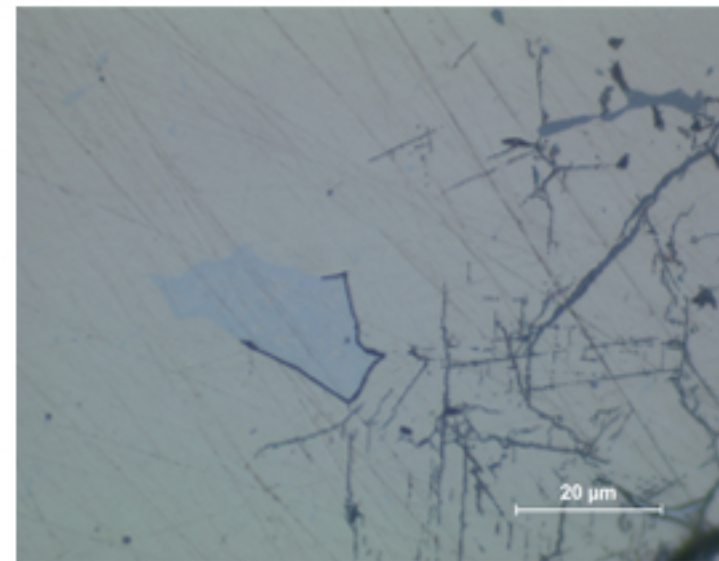
Detail: corrosion along slip bands, sulfide inclusions (grey) and eutectoid phase (blue grey). Note crack along eutectoid limits.

A46.3

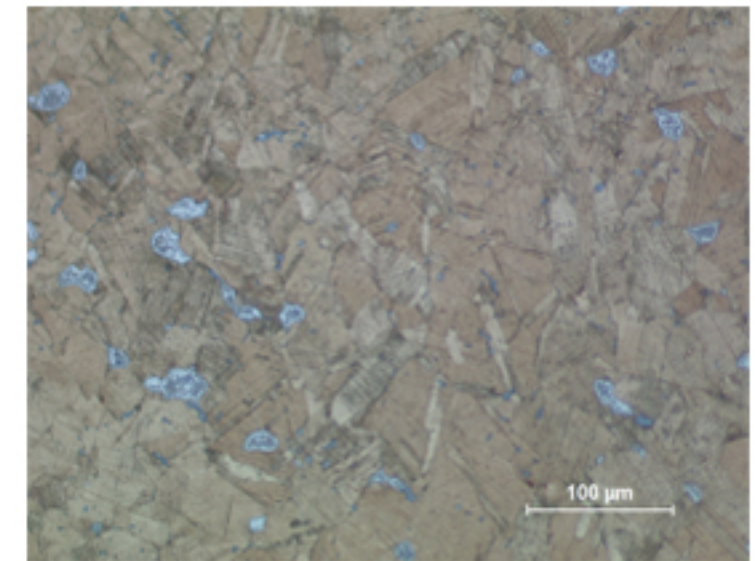
General view after etching; irregular grains of Cu-rich phase showing annealed twins but also many strain lines due to cold work after heat treatment. Eutectoid Sn-rich phase dispersed (white/grey phase). Small inclusions (dark grey) are S-rich. (etchant: aqueous  $\text{FeCl}_3$ ).

A46.4

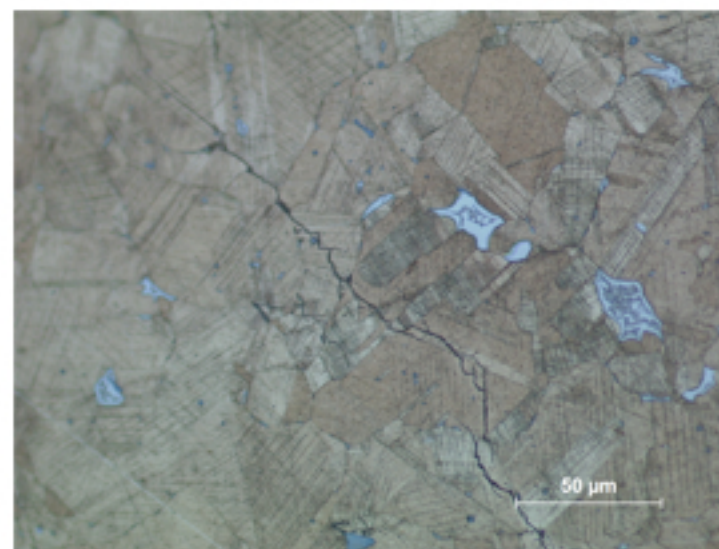
Detail of a transgranular crack. (etchant: aqueous  $\text{FeCl}_3$ ).



A46.2

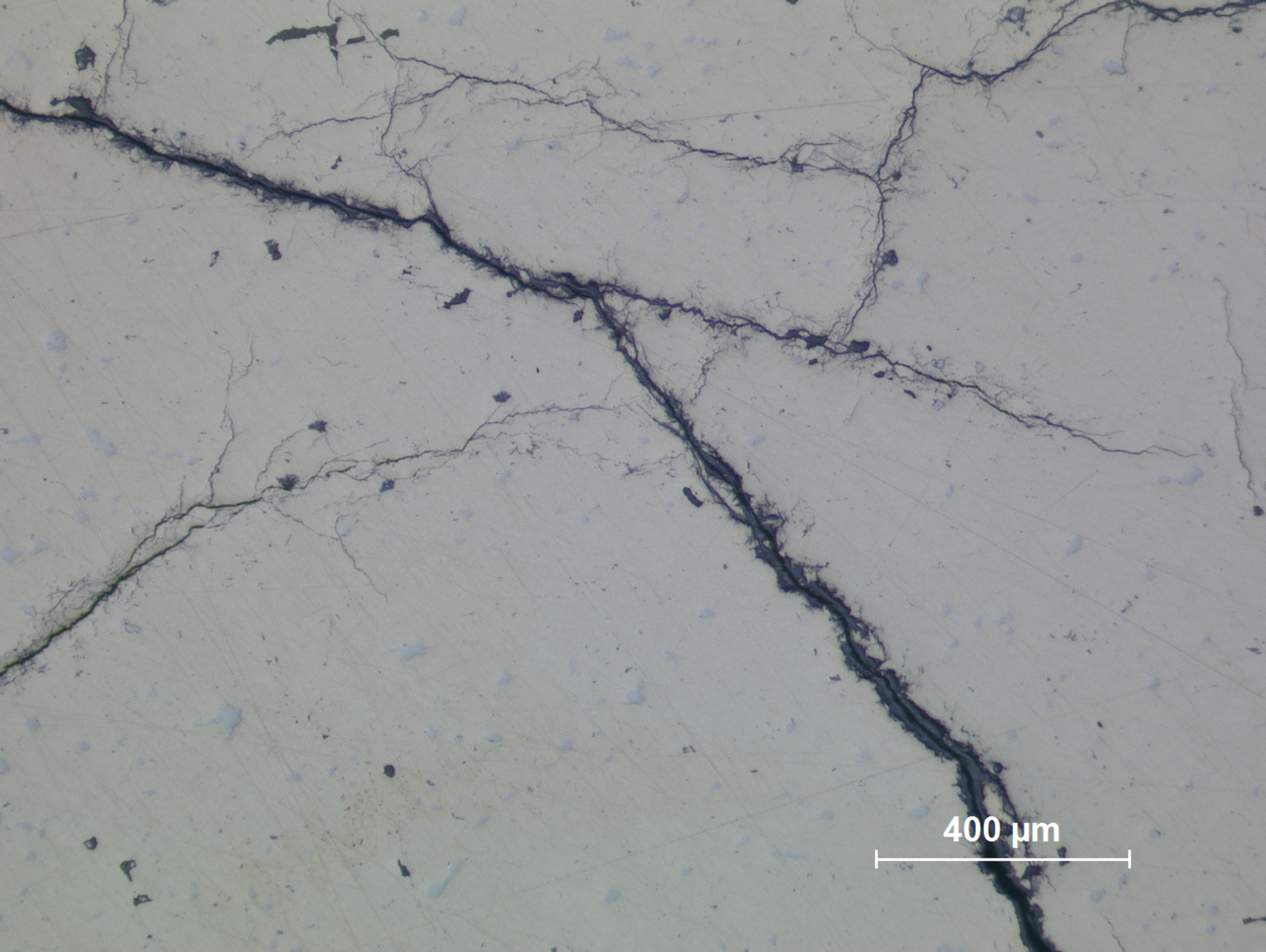


A46.3



A46.4

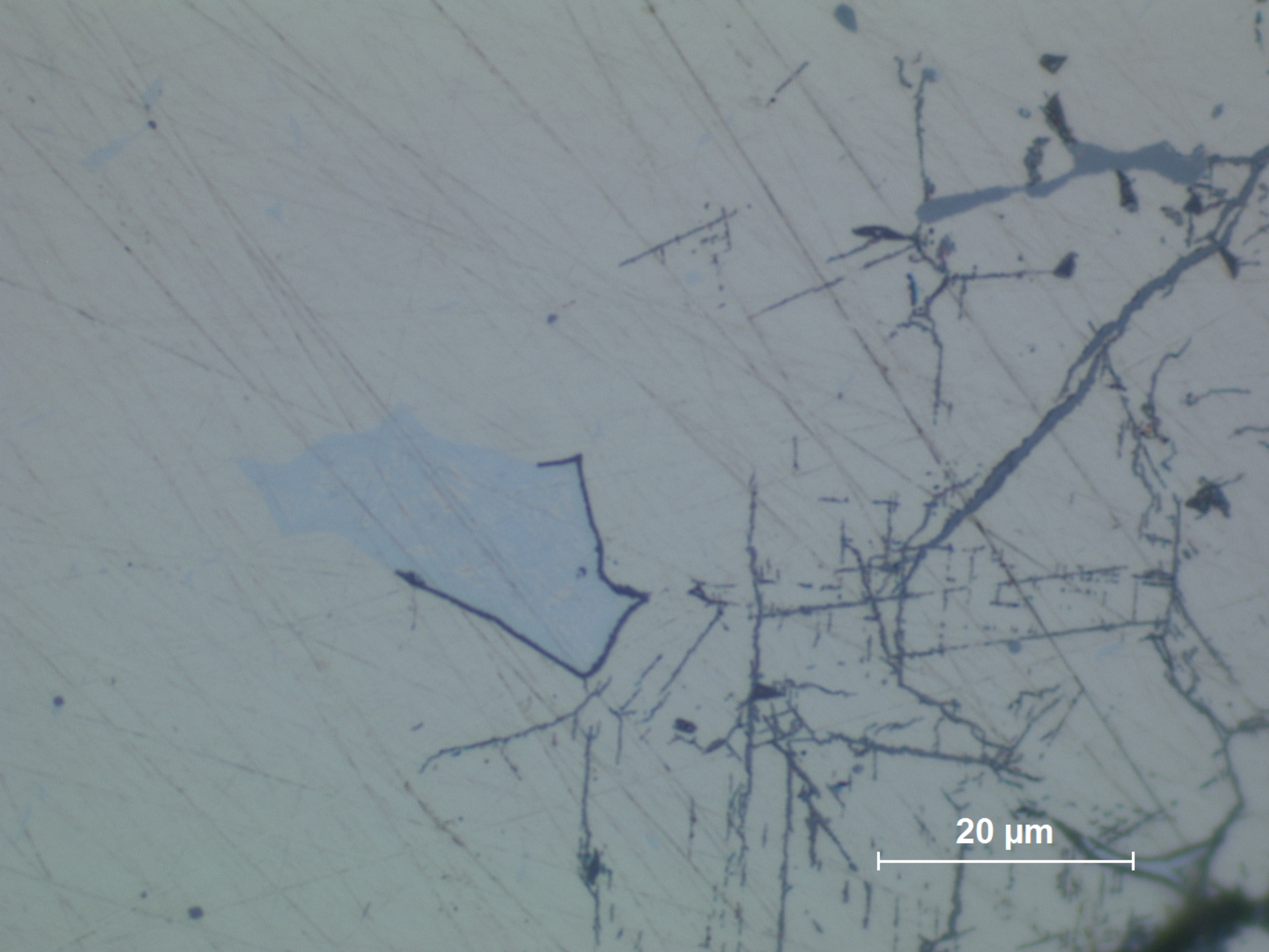




400 μm

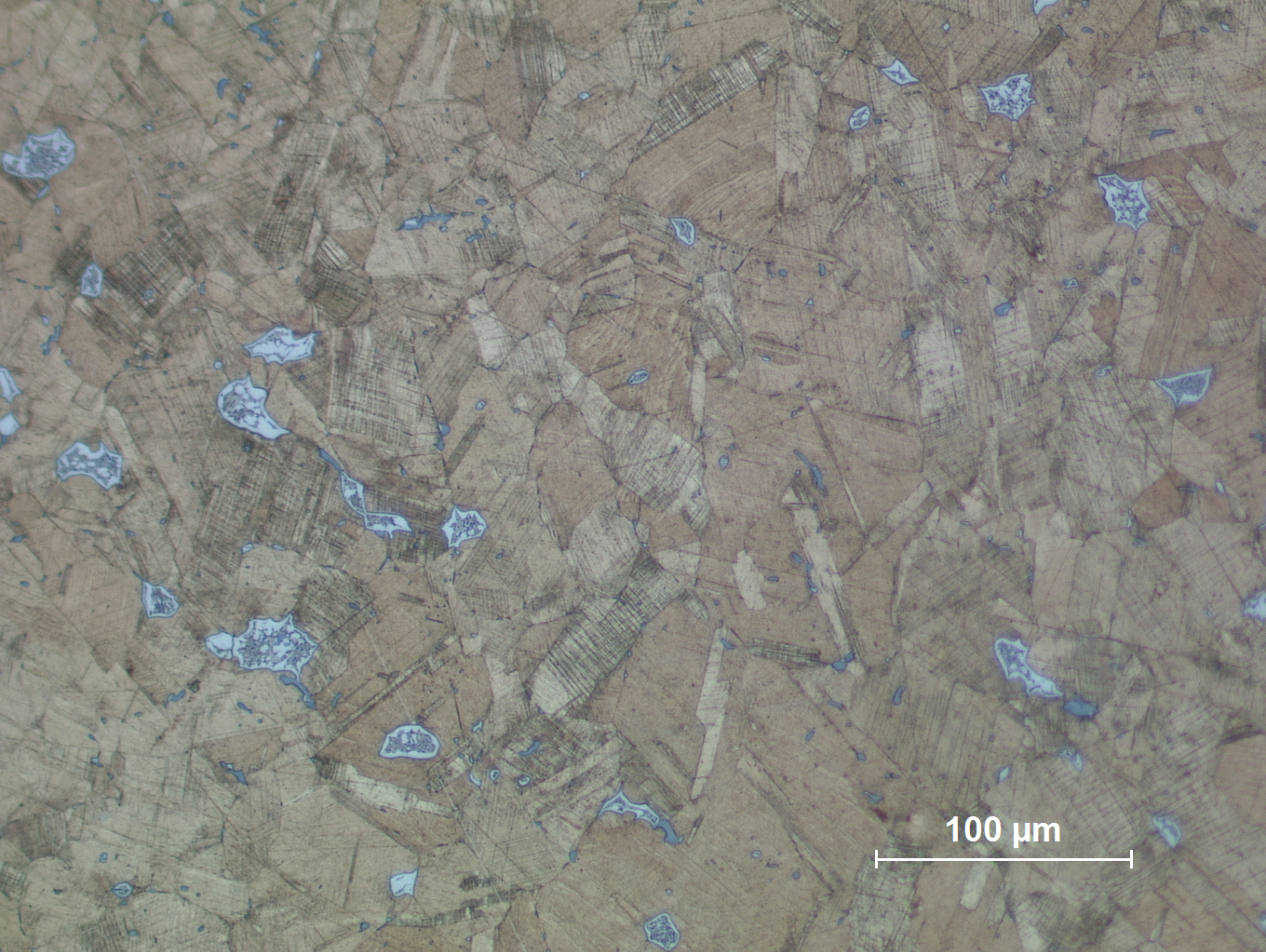
**A46.1**  
General view showing transgranular cracks with corrosion.





**A46.2**  
Detail: corrosion along slip bands, sulfide inclusions (grey) and eutectoid phase (blue grey). Note crack along eutectoid limits.



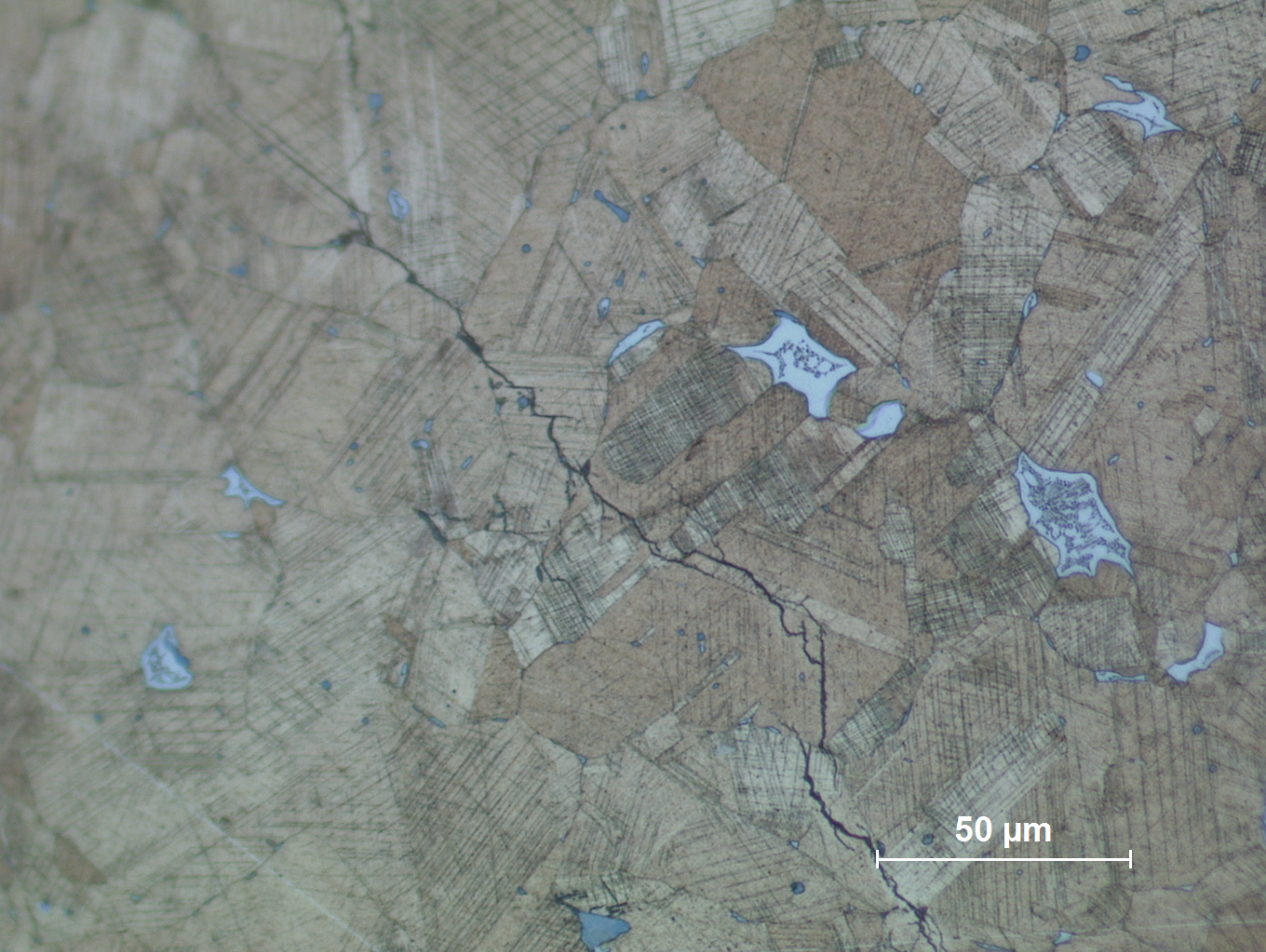


100  $\mu\text{m}$

**A46.3**

General view after etching; irregular grains of Cu-rich phase showing annealed twins but also many strain lines due to cold work after heat treatment. Eutectoid Sn-rich phase dispersed (white/grey phase). Small inclusions (dark grey) are S-rich. (etchant: aqueous  $\text{FeCl}_3$ ).





50 μm

A46.4  
Detail of a transgranular crack. (etchant: aqueous  $\text{FeCl}_3$ ).