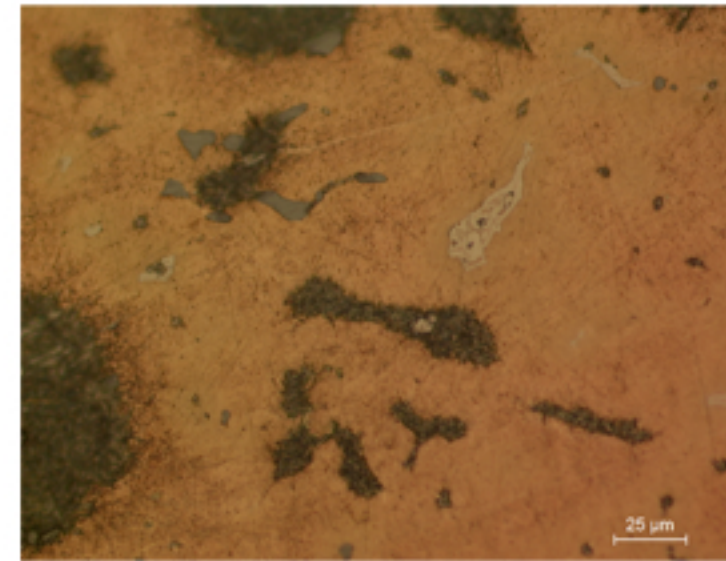
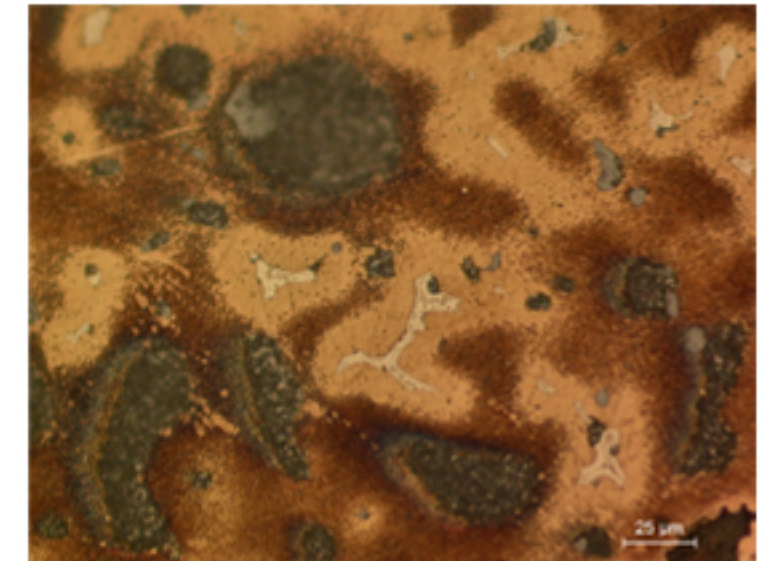


B04.1



B04.2



B04.3

Identification

Sample: B04
Card reference: S89
Origin: Nubia
Location: Cabinet des medailles

Description

High leaded tin bronze. White layer of lead carbonate on outside of the coin partially diffused towards the interior. Large globules of lead especially towards the interior, arranged in the direction of strike, globules are smaller towards the external surface. Density 9,52; Pb content 12-15% wt.

Figure captions

B04.1

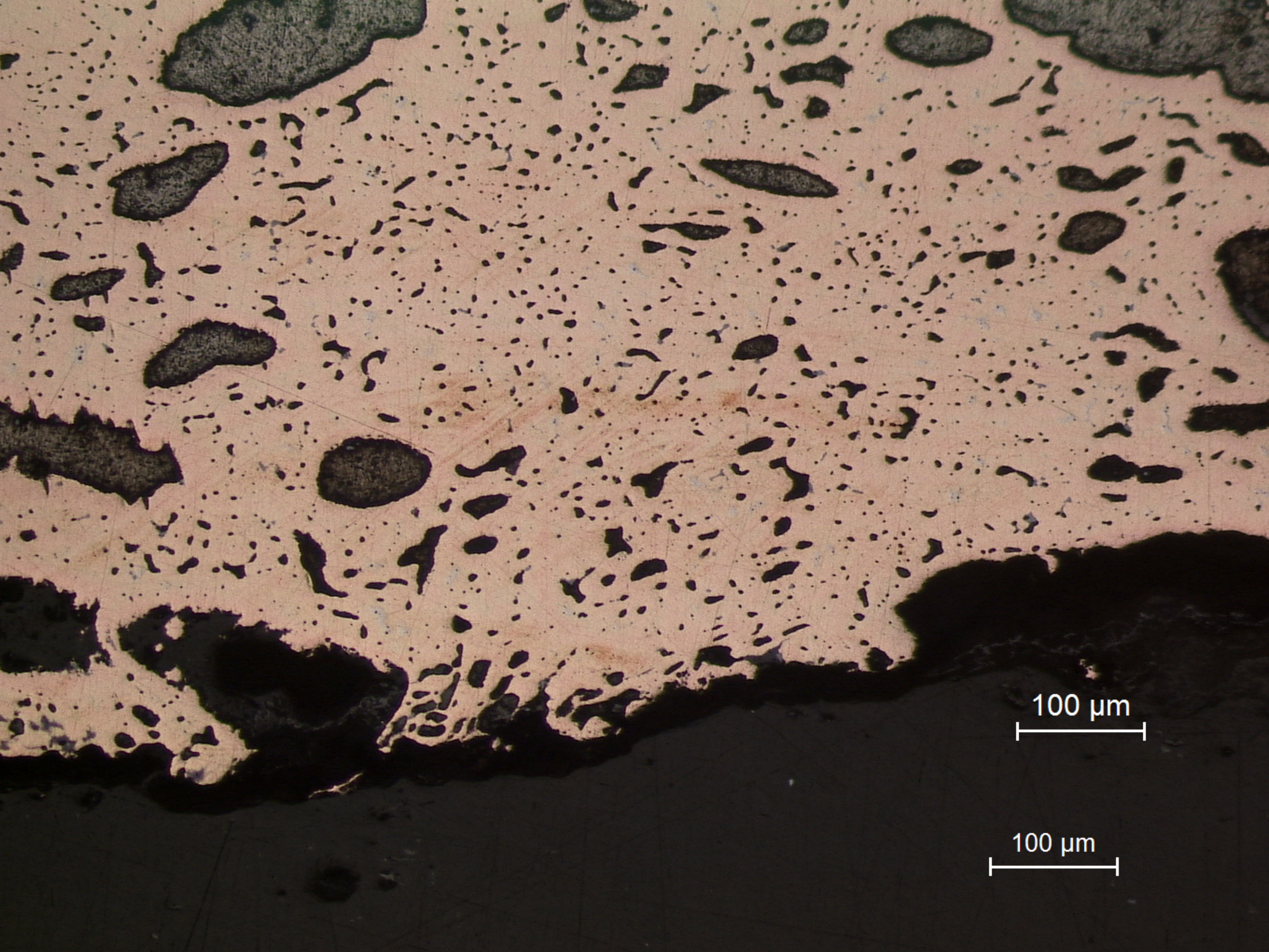
General view of the cross section: high quantity of inclusions.

B04.2

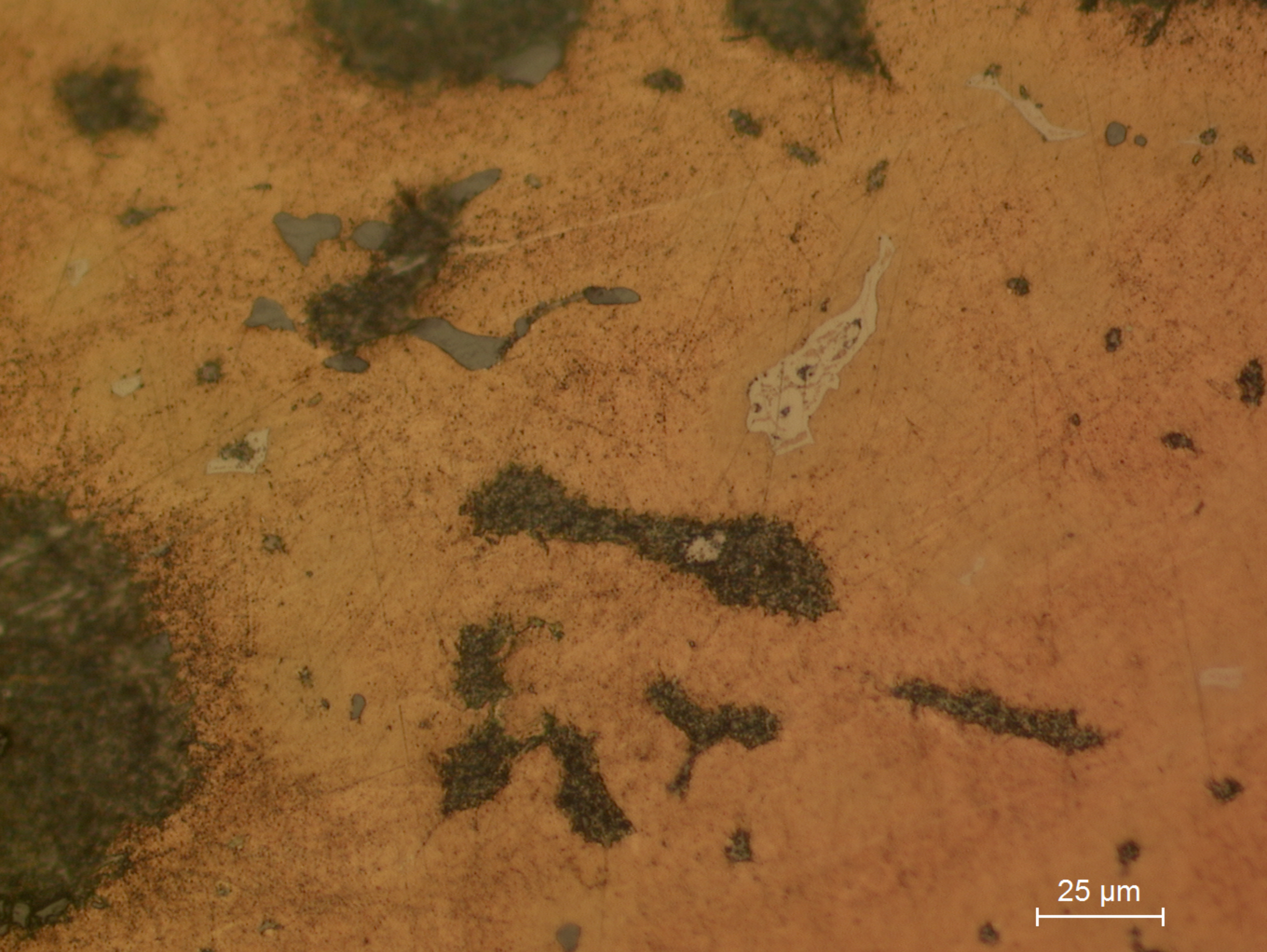
Detail showing different types of inclusions (fuzzy dark areas are Pb-rich and blue grey are S-rich) and the eutectoid phase (white) (etchant: aqueous FeCl_3).

B04.3

Detail showing a cored dendritic structure, with areas of eutectoid phase (white) and inclusions in the interdendritic space (etchant: aqueous FeCl_3).

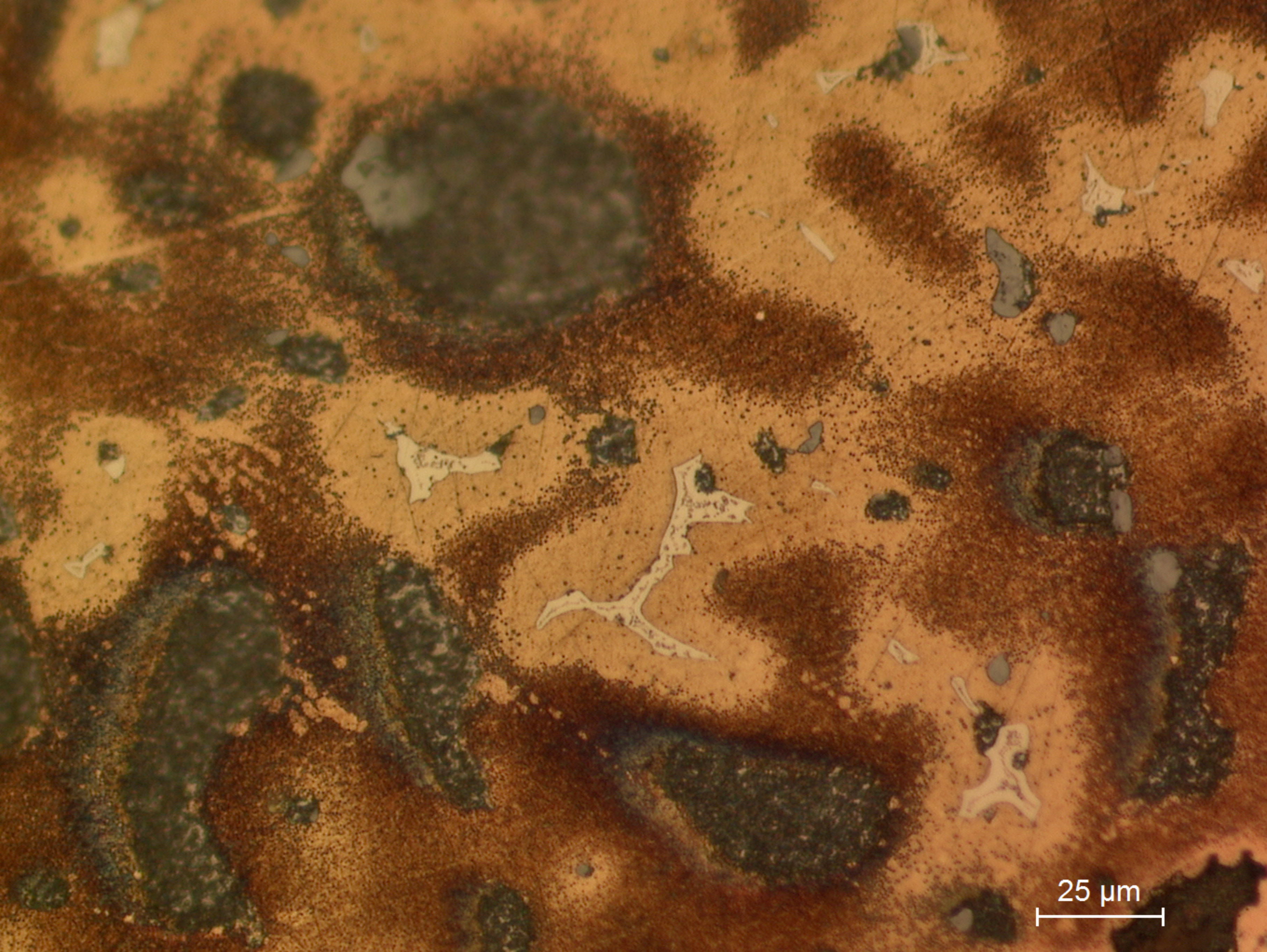


B04.1
General view of the cross section: high quantity of inclusions.

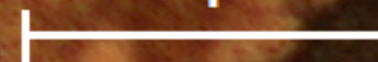


25 μm

B04.2
Detail showing different types of inclusions (fuzzy dark areas are Pb-rich and blue grey are S-rich) and the eutectoid phase (white) (etchant: aqueous FeCl_3).



25 μm



B04.3
Detail showing a cored dendritic structure, with areas of eutectoid phase (white) and inclusions in the interdendritic space (etchant: aqueous FeCl_3).