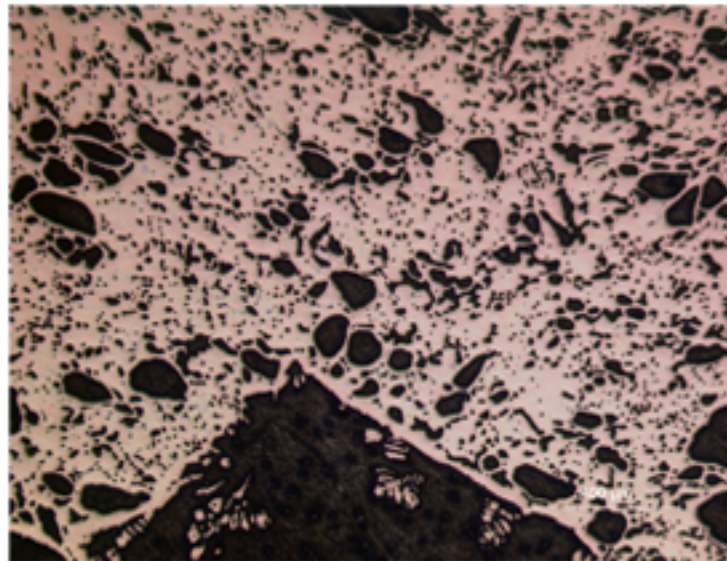
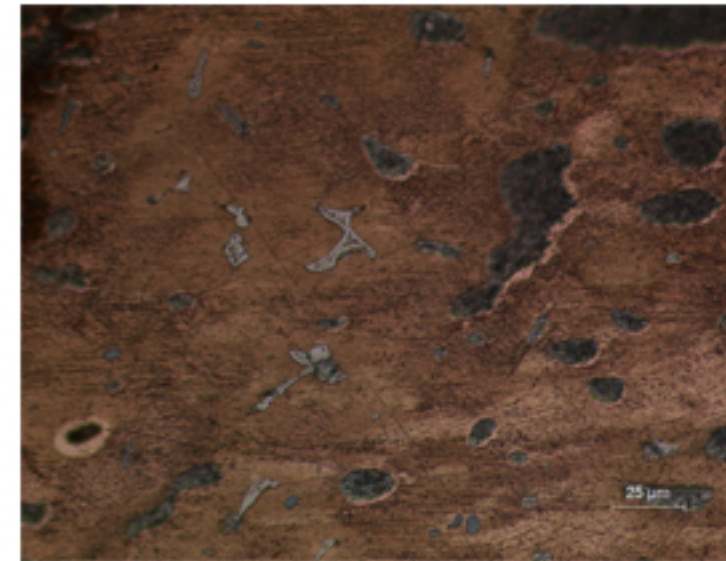


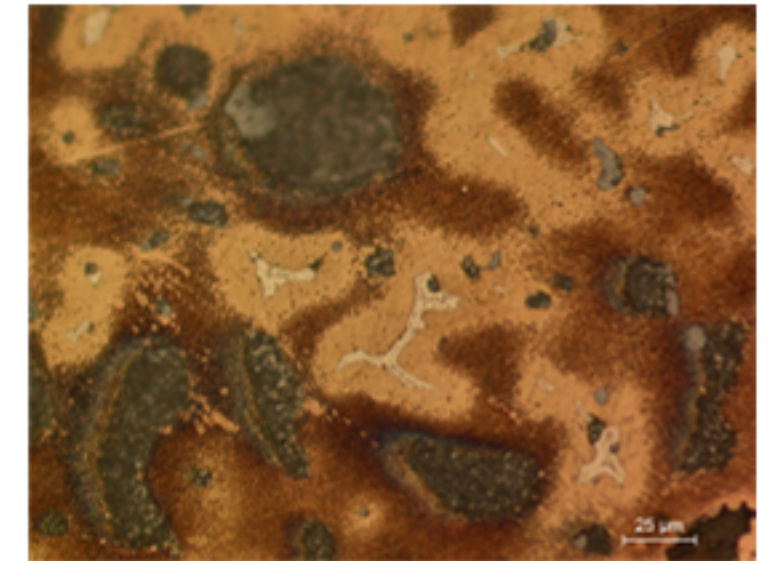
## B07 - LEADED BRONZE COIN



B07.1



B07.2



B07.3

### Identification

**Sample:** B07 (B08)  
**Card reference:** C31  
**Origin:** Philippopolis III  
**Location:** n/a

### Description

High leaded tin bronze. Dendritic structure is still discernable. The corrosion is primarily due to the bad conservation conditions in drawers made of oak wood.

### Figure captions

B07.1

General view: metallic part showing a huge amount of Pb in the form of globules of different sizes and shapes.

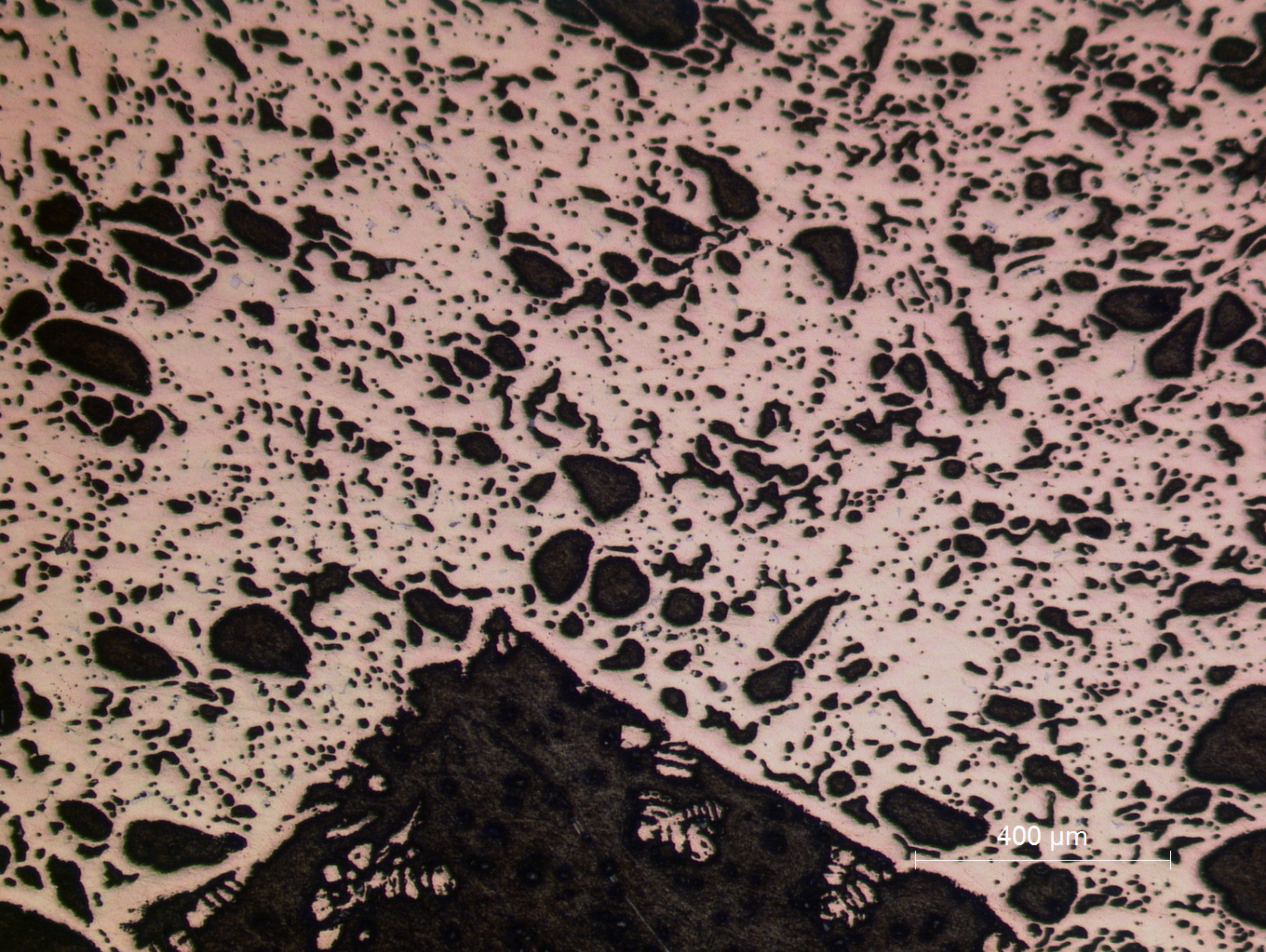
B07.2

Detail of the Cu-rich matrix with many Pb globules (dark grey) and a small amount of eutectoid phase (white); numerous sulfide globules (blue grey) (etchant: aqueous  $\text{FeCl}_3$ ).

B07.3

Detail showing the many strain lines due to cold working (etchant: aqueous  $\text{FeCl}_3$ ).





**B07.1**  
General view: metallic part showing a huge amount of Pb in the form of globules of different sizes and shapes.

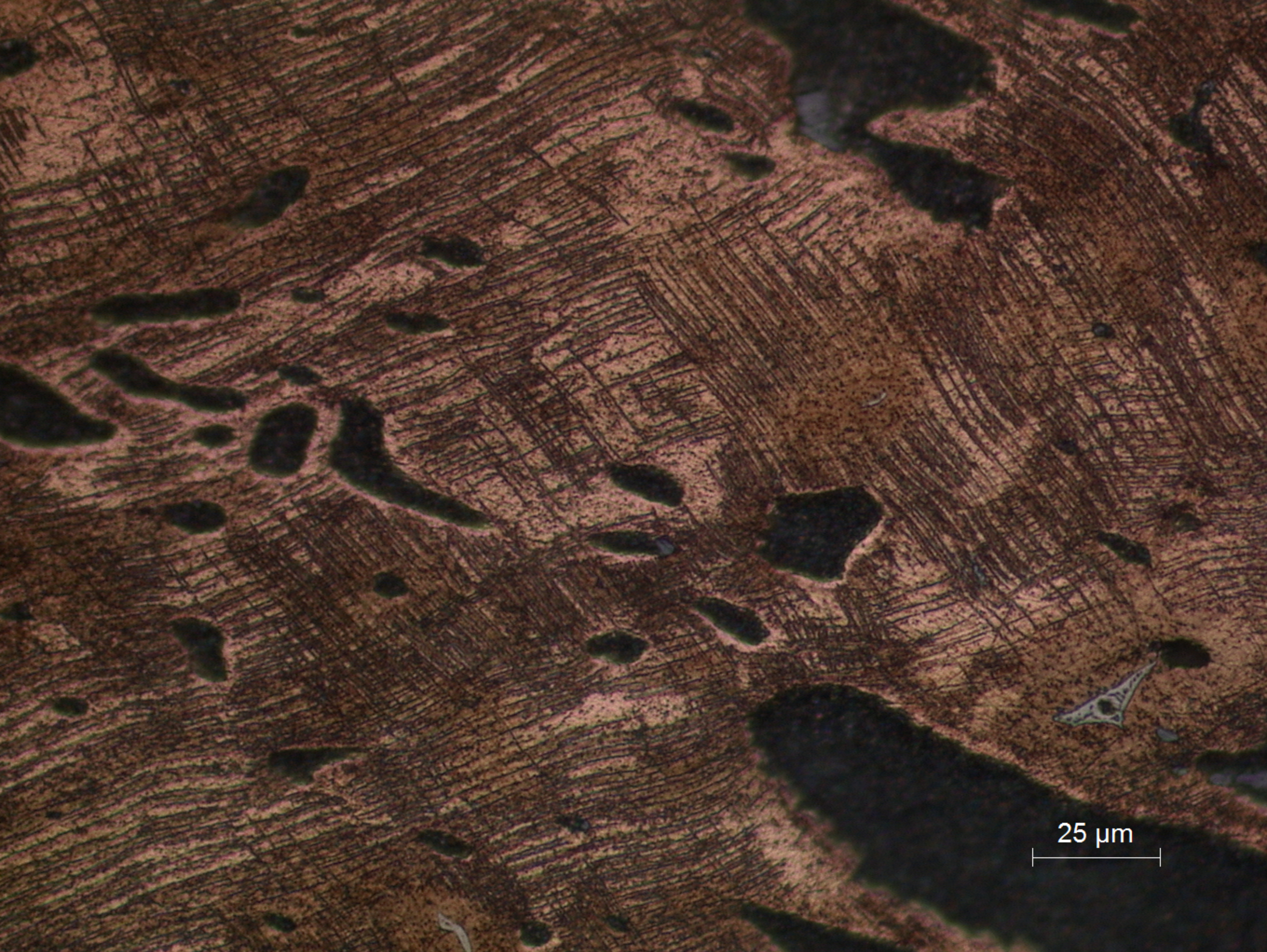




25 μm

**B07.2**  
Detail of the Cu-rich matrix with many Pb globules (dark grey) and a small amount of eutectoid phase (white); numerous sulfide globules (blue grey) (etchant: aqueous  $\text{FeCl}_3$ ).





25 μm

B07.3  
Detail showing the many strain lines due to cold working (etchant: aqueous FeCl<sub>3</sub>).