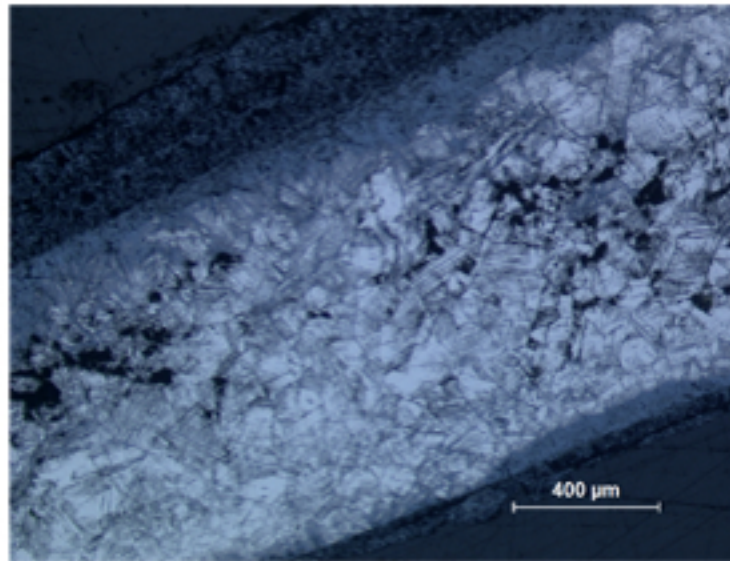
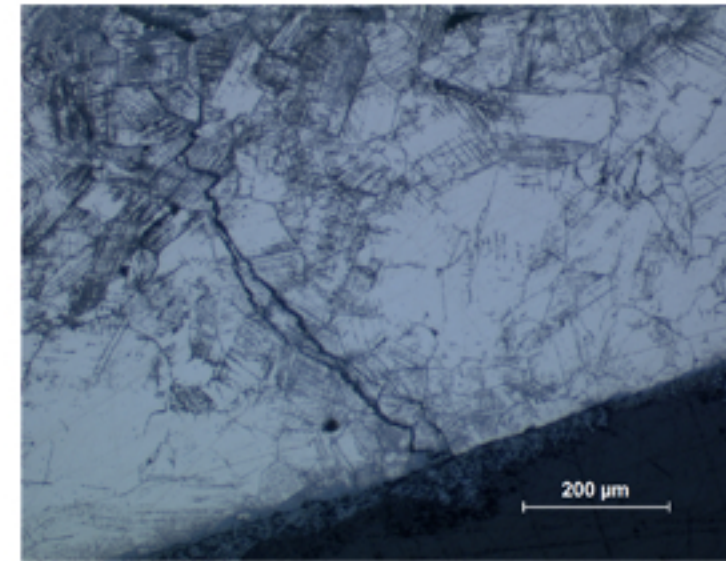


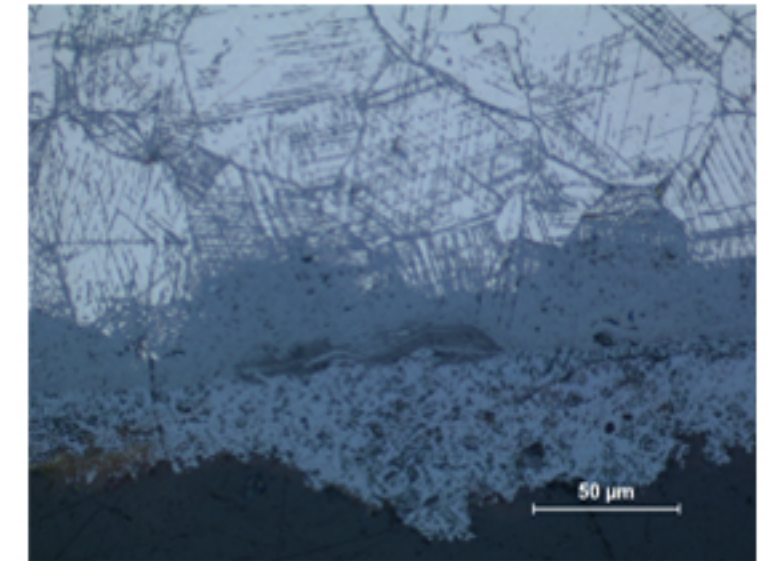
B12 - TIN BRONZE



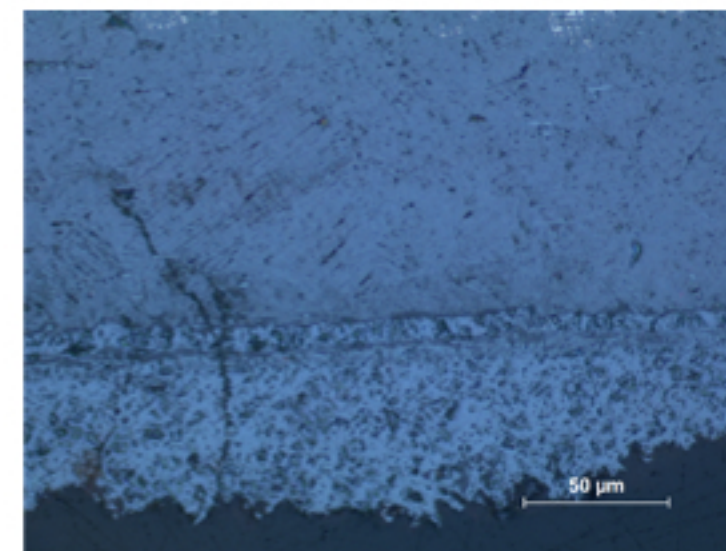
B12.1



B12.2



B12.3



B12.4

Identification

Sample: B12 (B13)
Card reference: C37
Origin: n/a
Location: n/a

Description

Original surface (epidermis) is clearly defined. Corroded metal and many cracks in the middle of layered corrosion products (cuprite and carbonate).

Figure captions

B12.1

General view of the cross section: mostly corroded polygonal grains with annealing twins and many strain lines; voids and pores in the center (black).

B12.2

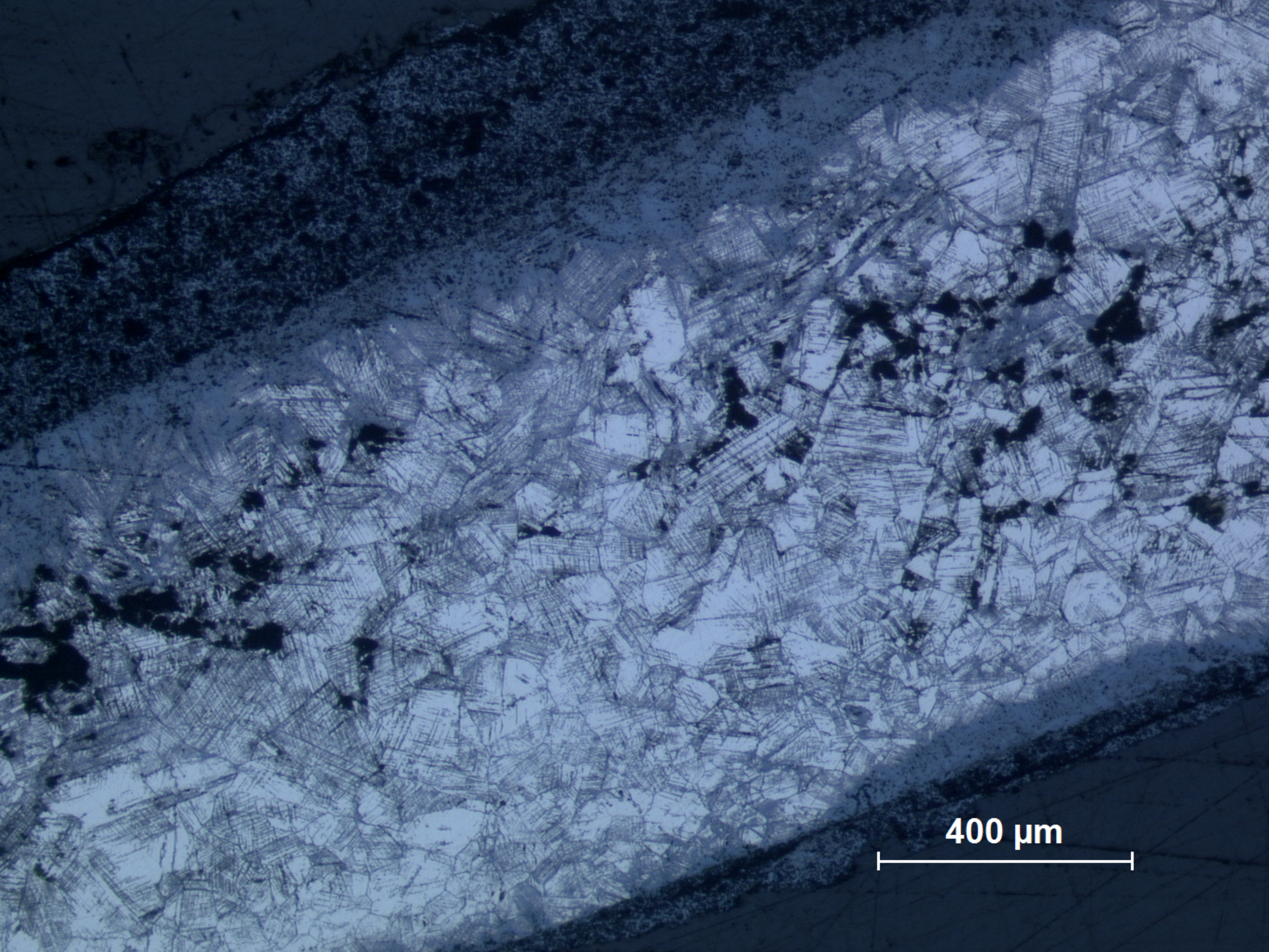
Detail showing a crack, with an alternating trans- and intergranular path.

B12.3

Detail of the surface region: here it is possible to see the original surface (epidermis) located in between two different corrosion products (internal layer in close contact to the alloy and external layer with porosities).

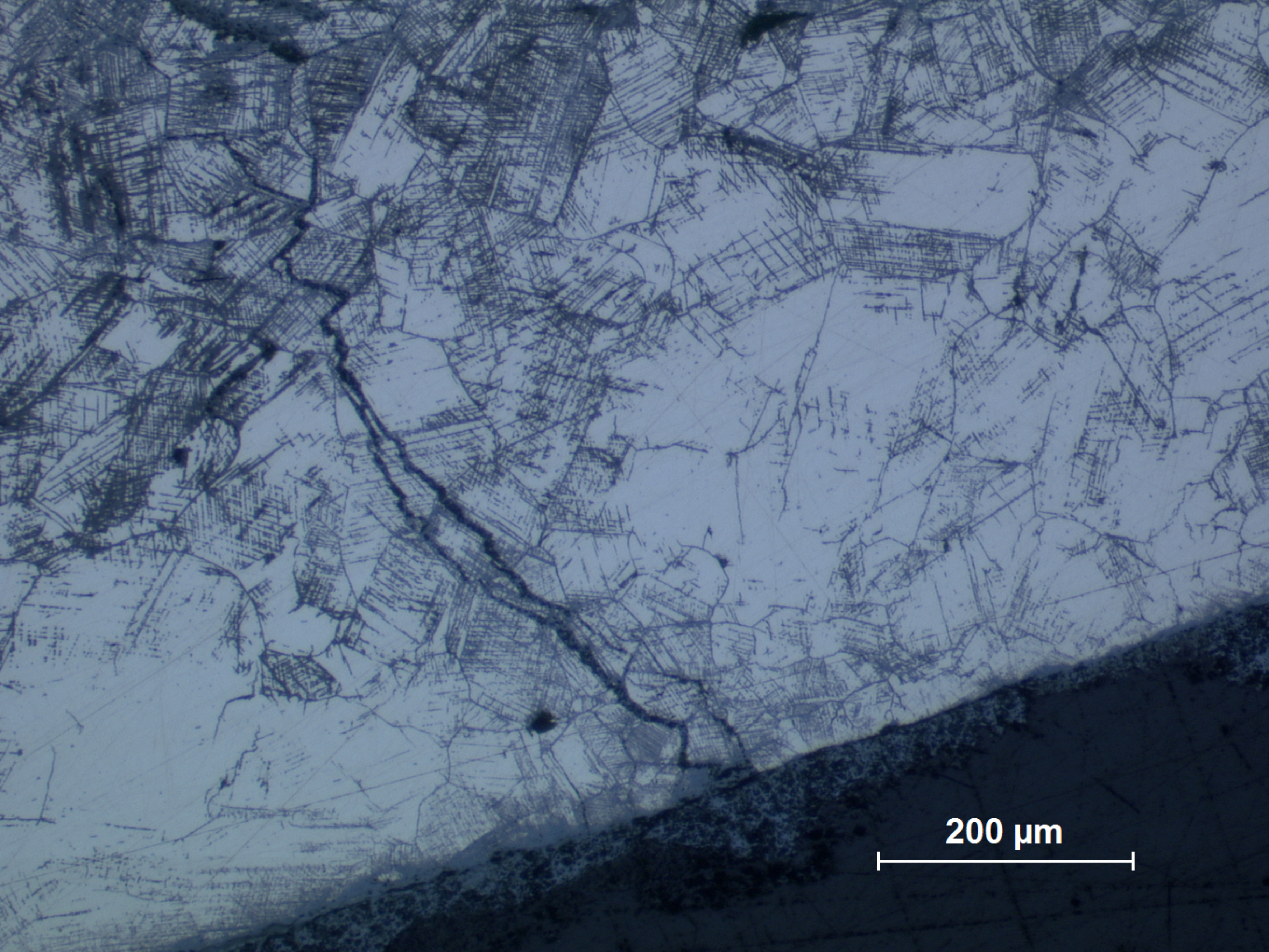
B12.4

Detail showing another area of the surface region, two layers of internal corrosion products are visible.



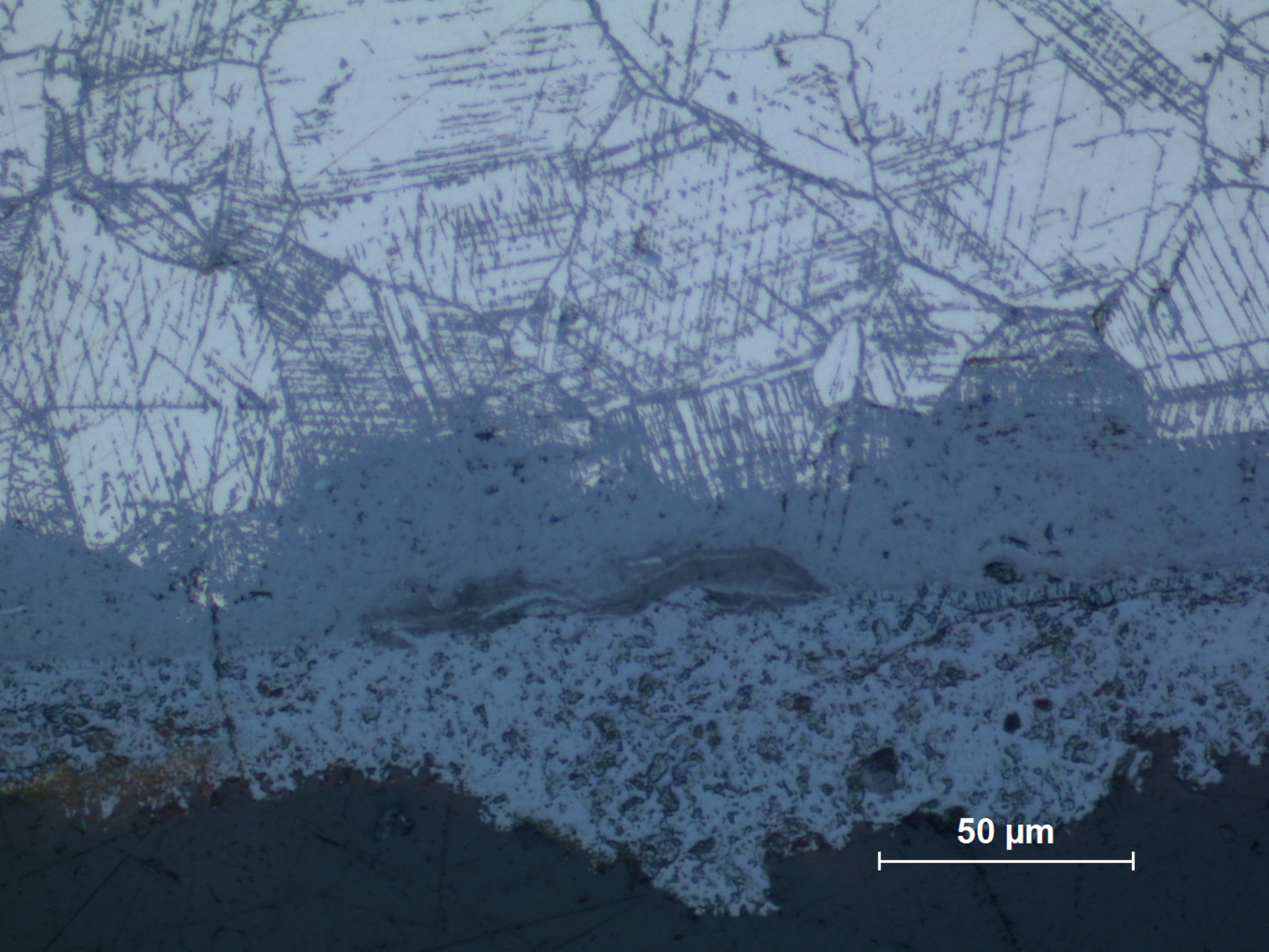
400 μm

B12.1
General view of the cross section: mostly corroded polygonal grains with annealing twins and many strain lines; voids and pores in the center (black).



200 μm

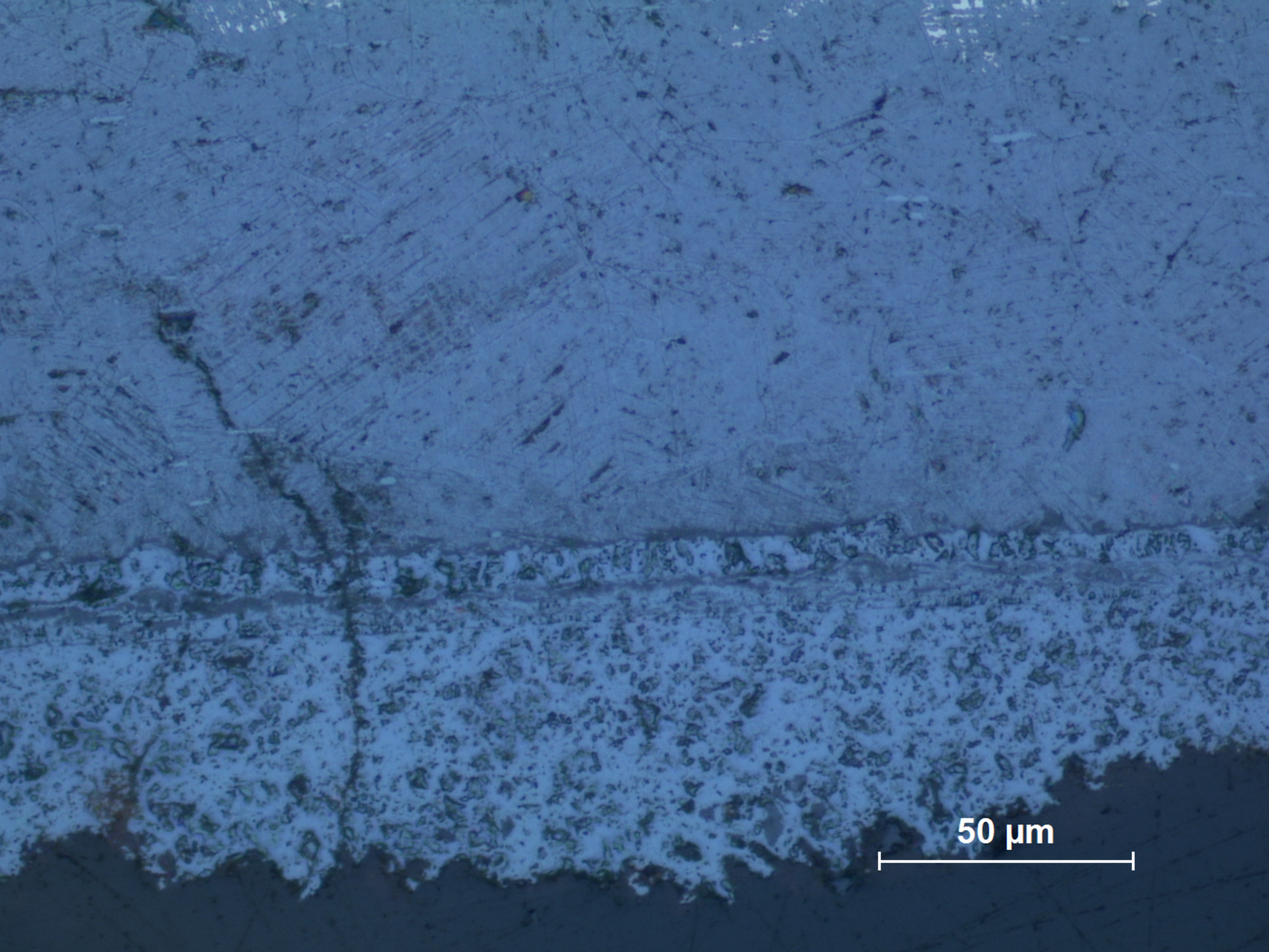
B12.2
Detail showing a crack, with an alternating trans- and intergranular path.



50 μm

B12.3

Detail of the surface region: here it is possible to see the original surface (epidermis) located in between two different corrosion products (internal layer in close contact to the alloy and external layer with porosities).



50 μm

B12.4
Detail showing another area of the surface region, two layers of internal corrosion products are visible.