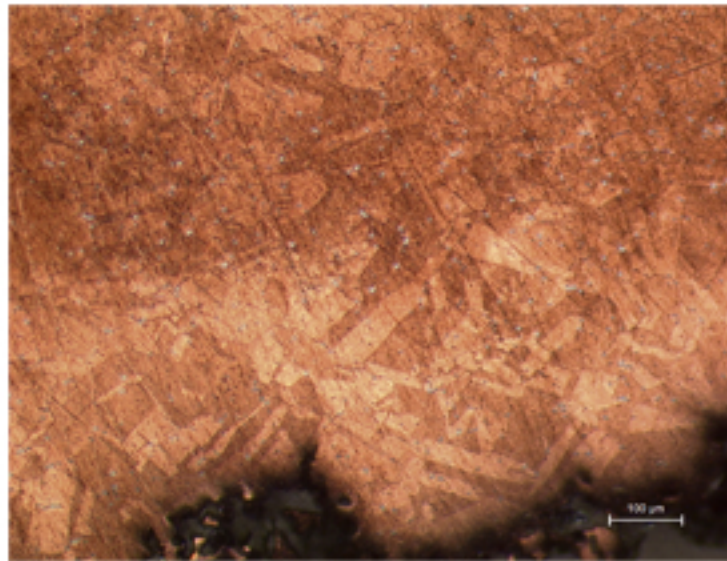


B37 - COPPER BOAT NAIL



B37.1

Identification

Sample: B37
Card reference: C45/C46
Origin: Ancient wreck

Description

Copper grains with numerous inclusions. Wood preserved by copper salts together with residual uncorroded copper and corrosion products. Concentric strata in the corroded metal, a legacy from the original hammering work carried out during manufacture of the nail.

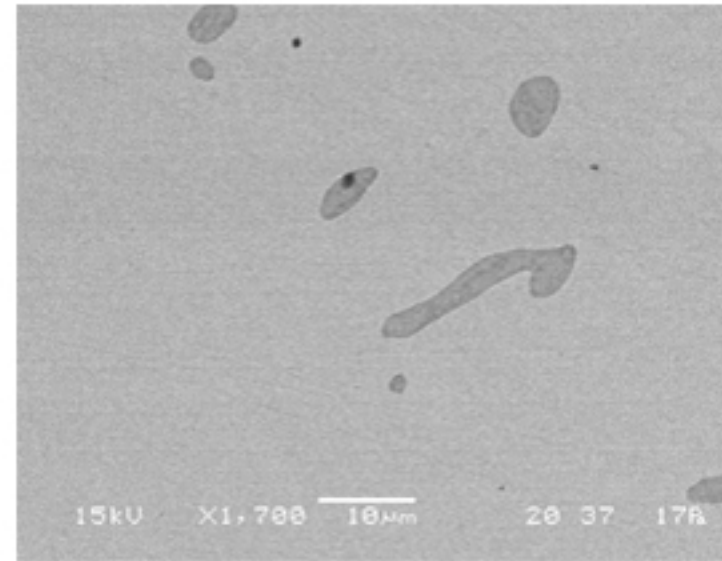
Figure captions

B37.1

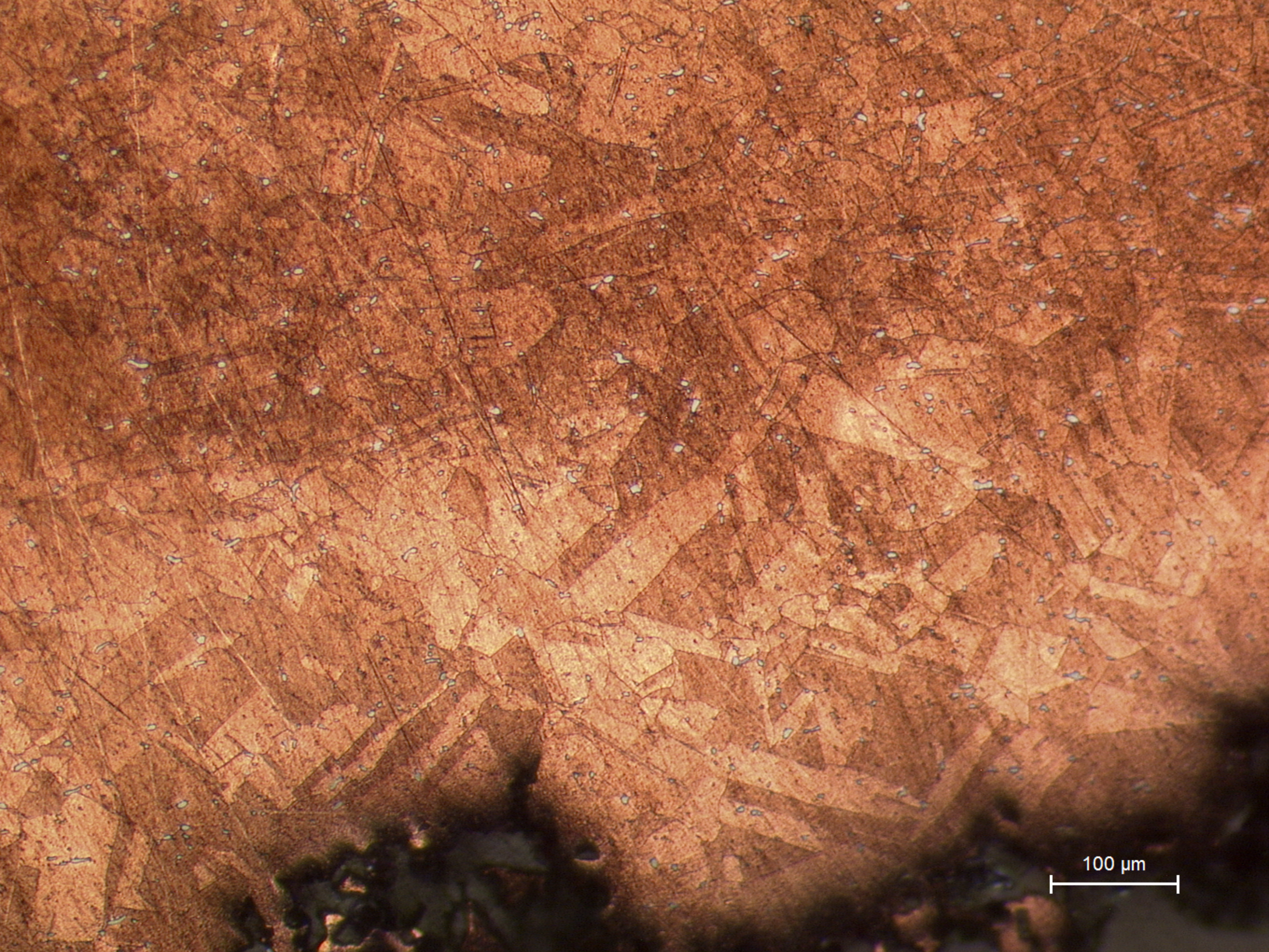
Cross section near surface: recrystallized grains with annealing twins, no evidence of strain lines; many small dispersed impurities (white dots) (etchant: aqueous FeCl_3).

B37.2

SEM image showing inclusions with different shapes, containing Fe and S.

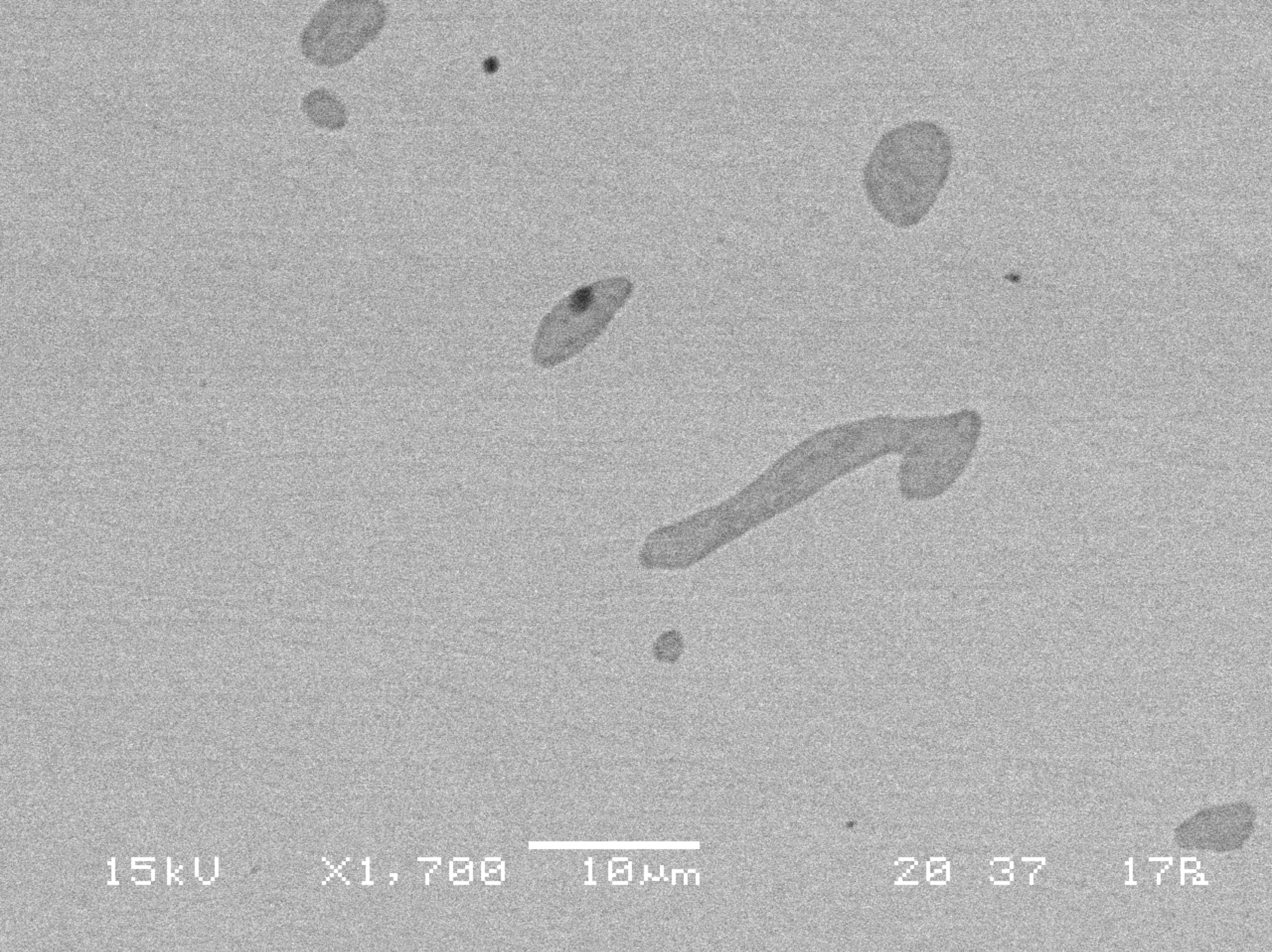


B37.2



100 μm

B37.1
Cross section near surface: recrystallized grains with annealing twins, no evidence of strain lines; many small dispersed impurities (white dots) (etchant: aqueous FeCl_3).



15kV

X1,700

10µm

20

37

17R

B37.2
SEM image showing inclusions with different shapes, containing Fe and S.