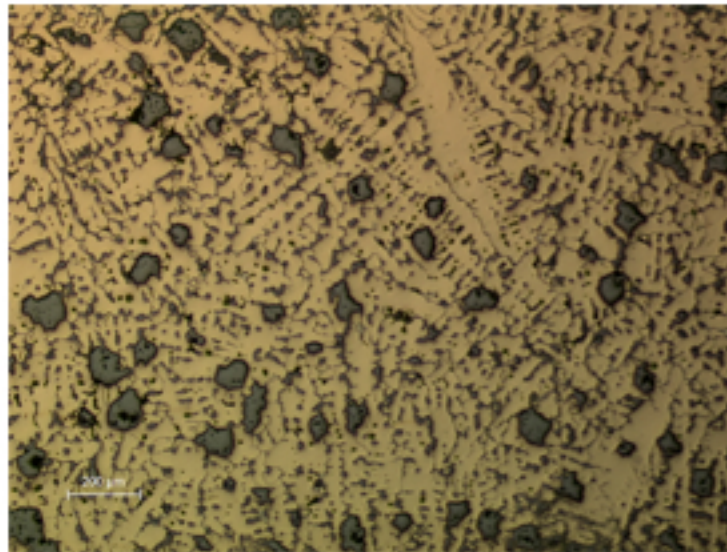


B41 - BRASSARD



B41.1

Identification

Sample: B41
Card reference: S99
Origin: Hallstatt A
Location: Collection AFL

Description

Object made from bronze rings (cast), boxed one within the other and united by a bond (or strap?). Lead globules can be seen within the dendritic structure at low magnification. The abundant large stains are inclusions of copper oxide. Analysis (%): Cu 77.5; Sn 13.0; Pb 6.6; Fe 0.6; Zn 0.8.

Figure captions

B41.1

General view showing dendritic structure with many inclusions: the large grey globules are Pb.

B41.2

Detail near the surface: corrosion along strain lines and concentric corrosion products.

B41.3

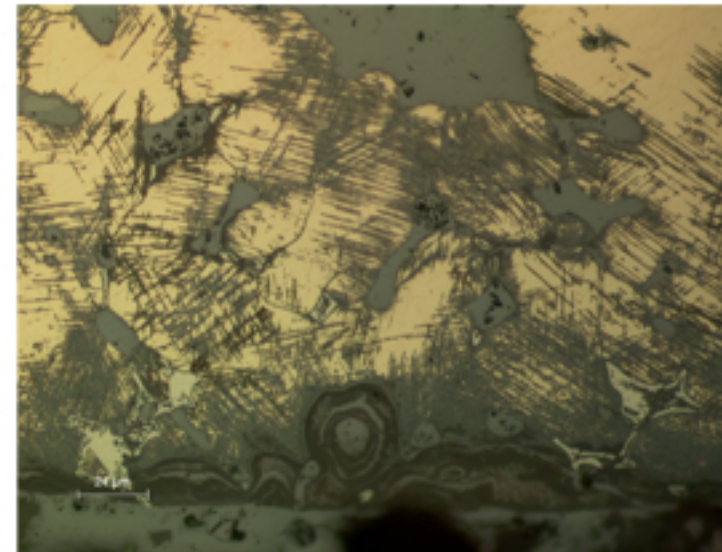
Detail showing corrosion following strain lines and inclusions.

B41.4

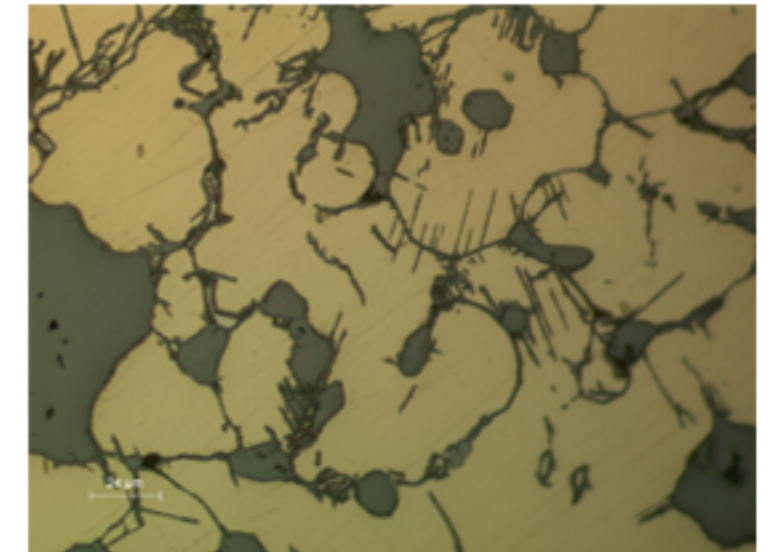
Detail near the surface: corrosion developing in the matrix but the Sn-rich eutectoid phase is not affected.

B41.5

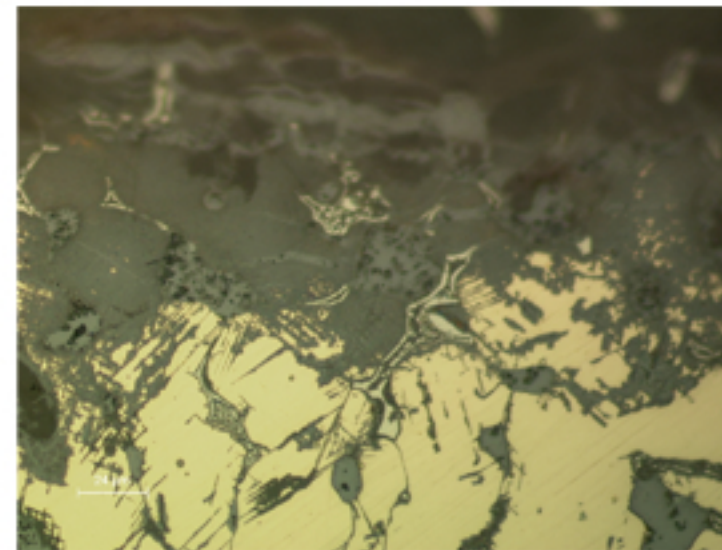
Detail showing the remnant Sn-rich phase within the eutectoid phase in the middle of corrosion products.



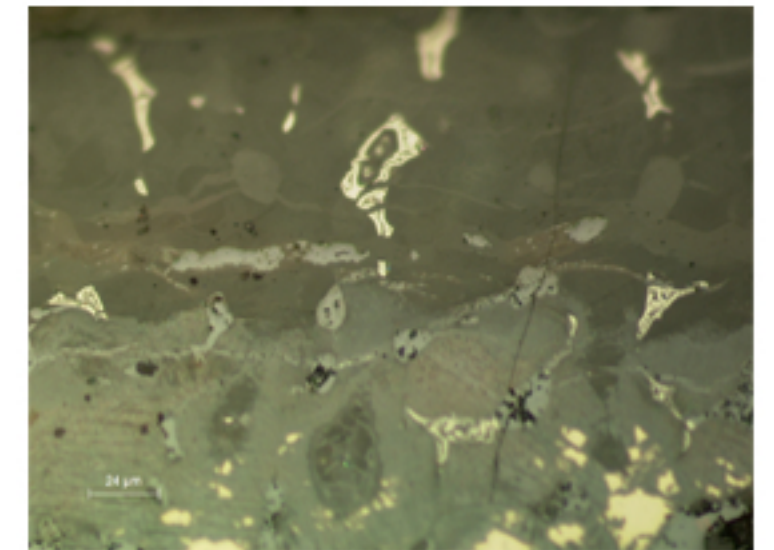
B41.2



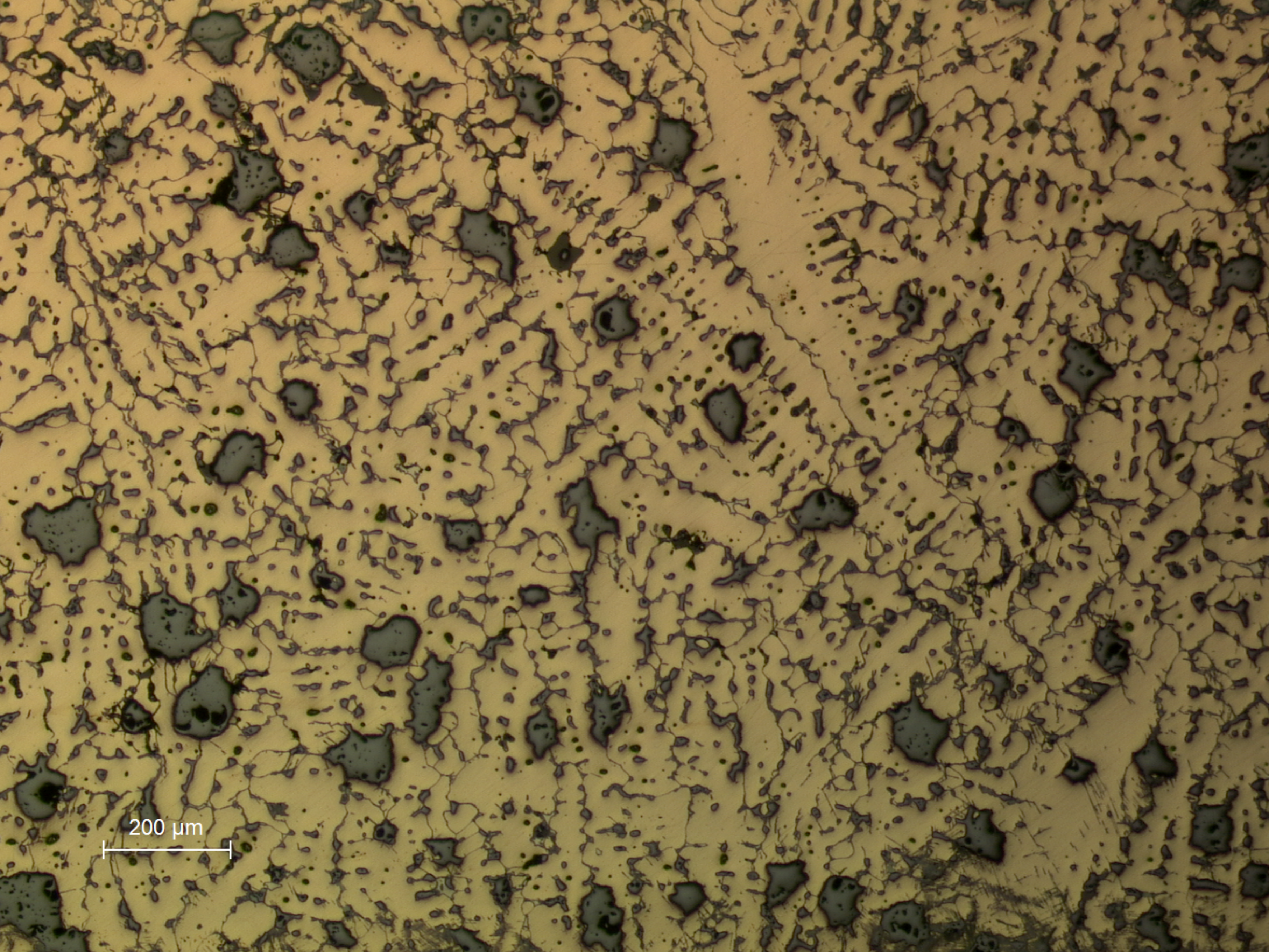
B41.3



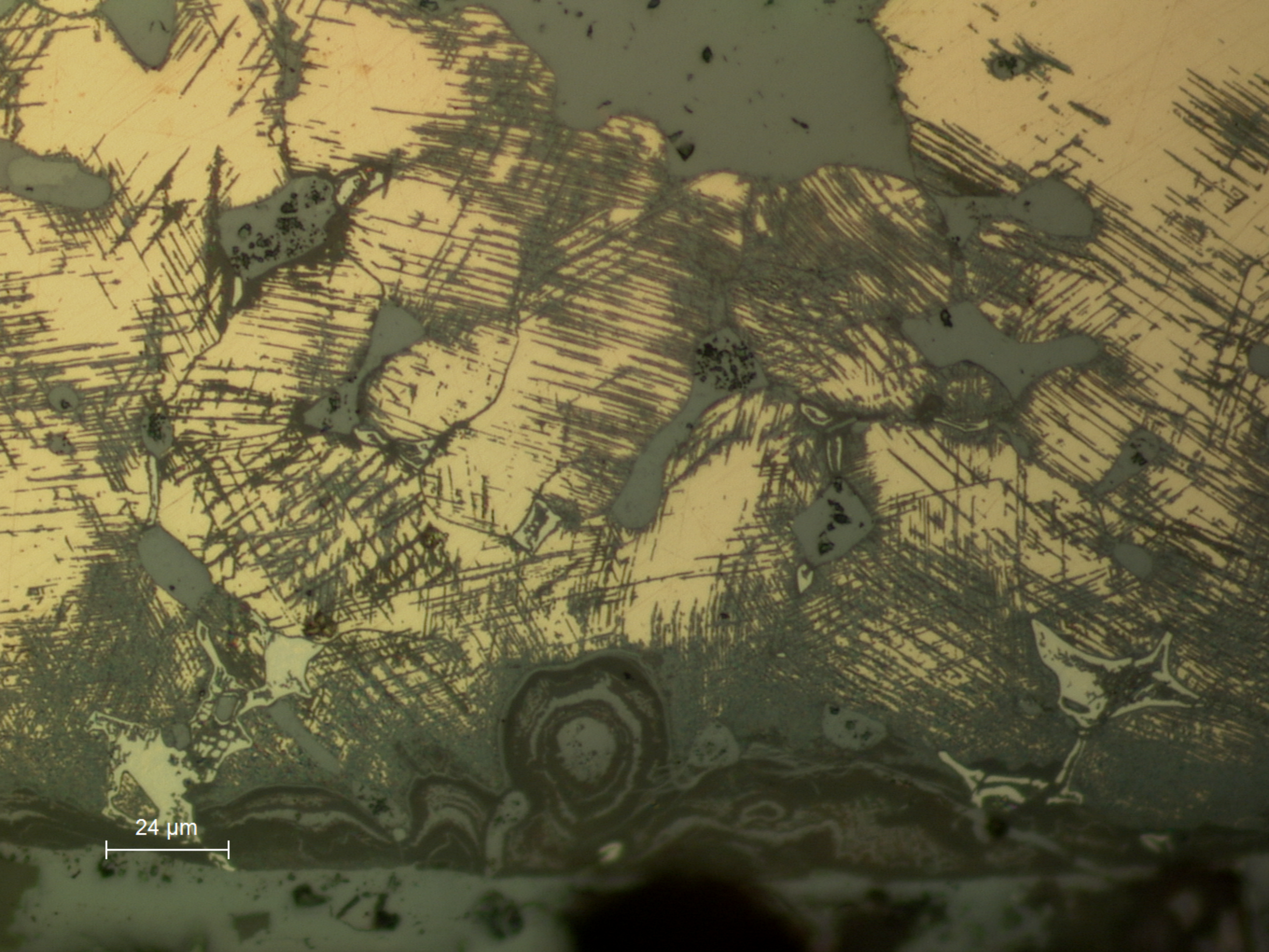
B41.4



B41.5

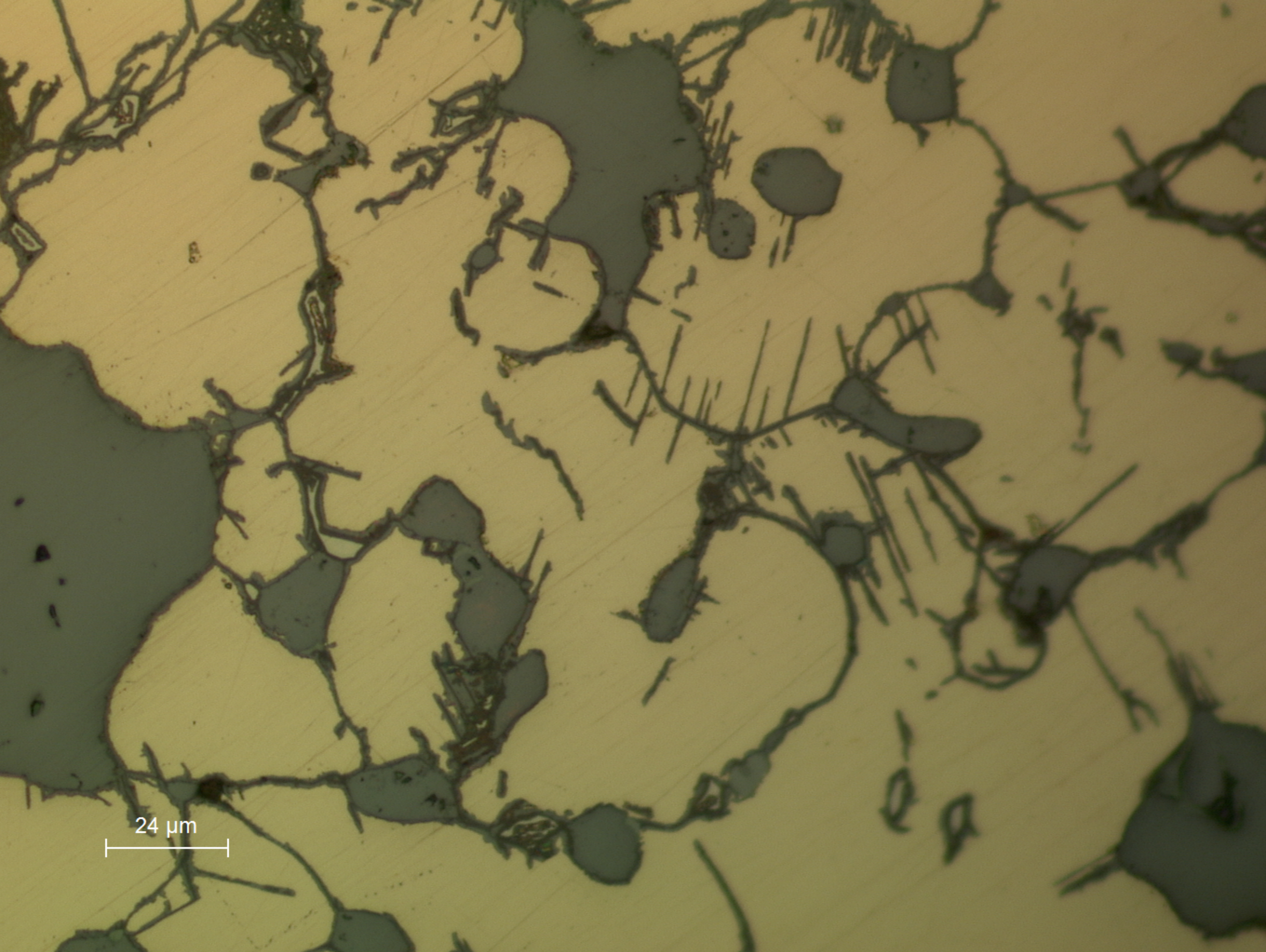


B41.1
General view showing dendritic structure with many inclusions: the large grey globules are Pb.

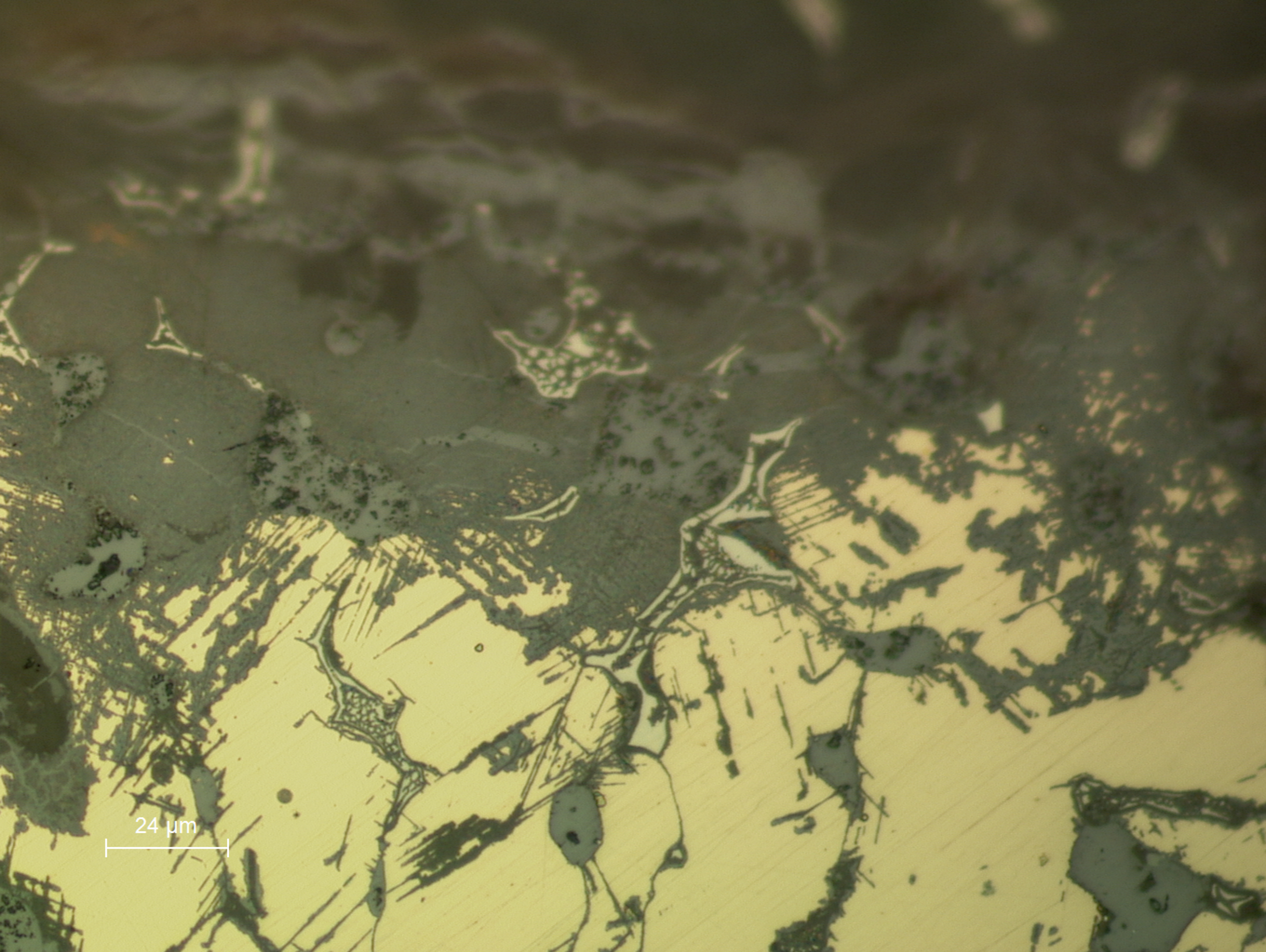


24 μm

B41.2
Detail near the surface: corrosion along strain lines and concentric corrosion products.

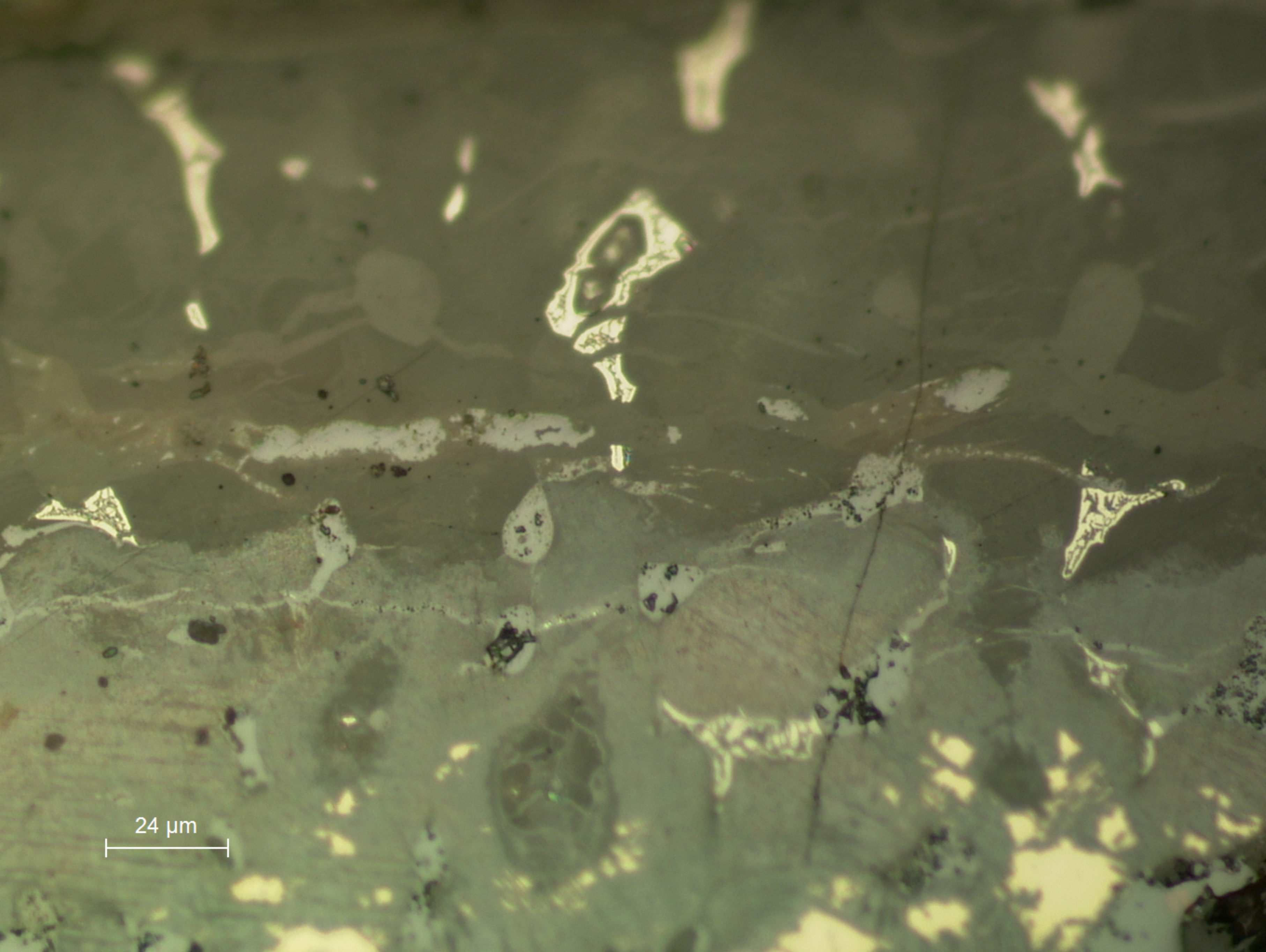


B41.3
Detail showing corrosion following strain lines and inclusions.



24 μm

B41.4
Detail near the surface: corrosion developing in the matrix but the Sn-rich eutectoid phase is not affected.



24 μm

B41.5
Detail showing the remnant Sn-rich phase within the eutectoid phase in the middle of corrosion products.