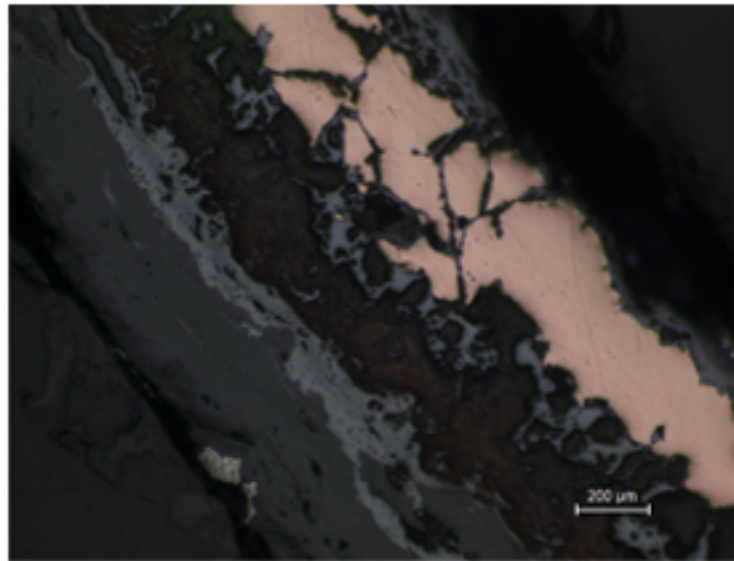
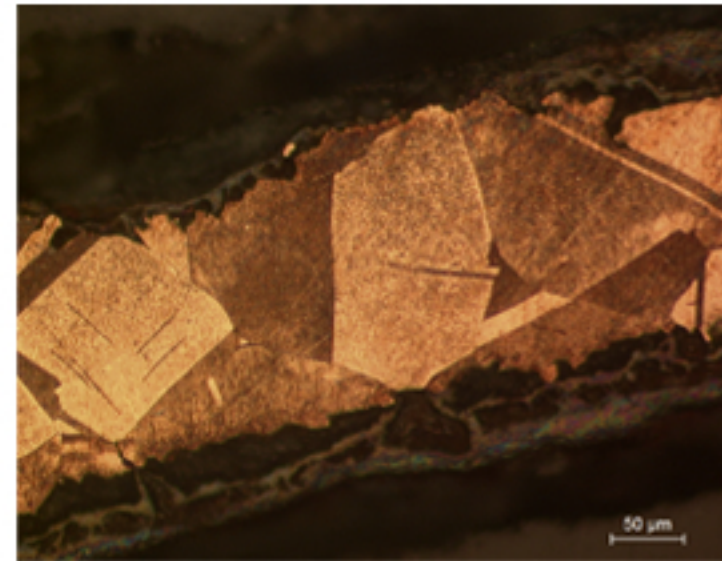


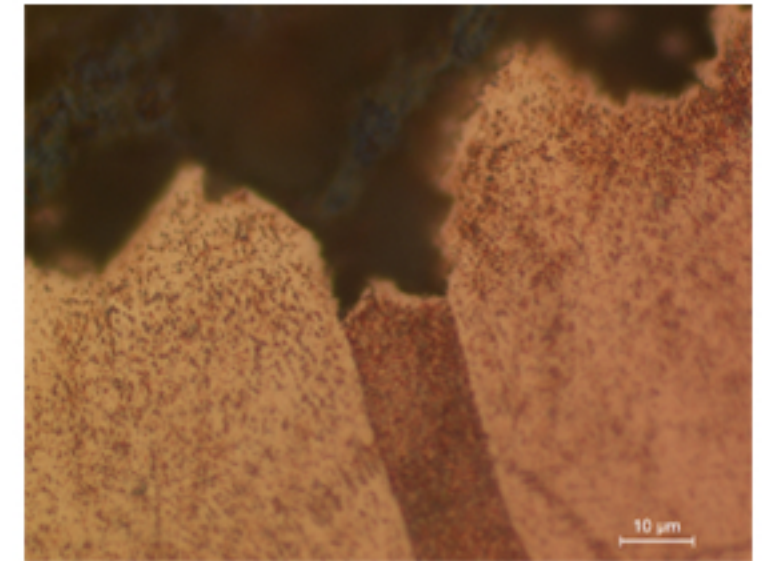
B50 - ORNAMENT



B50.1



B50.2



B50.3

Identification

Sample: B50
Card reference: S96
Origin: Tiahuanaco (Mexico)
Location: Collection AFL

Description

Pure native beaten copper with large metallic grains; no inclusions. Deep corrosion on two faces.

Figure captions

B50.1

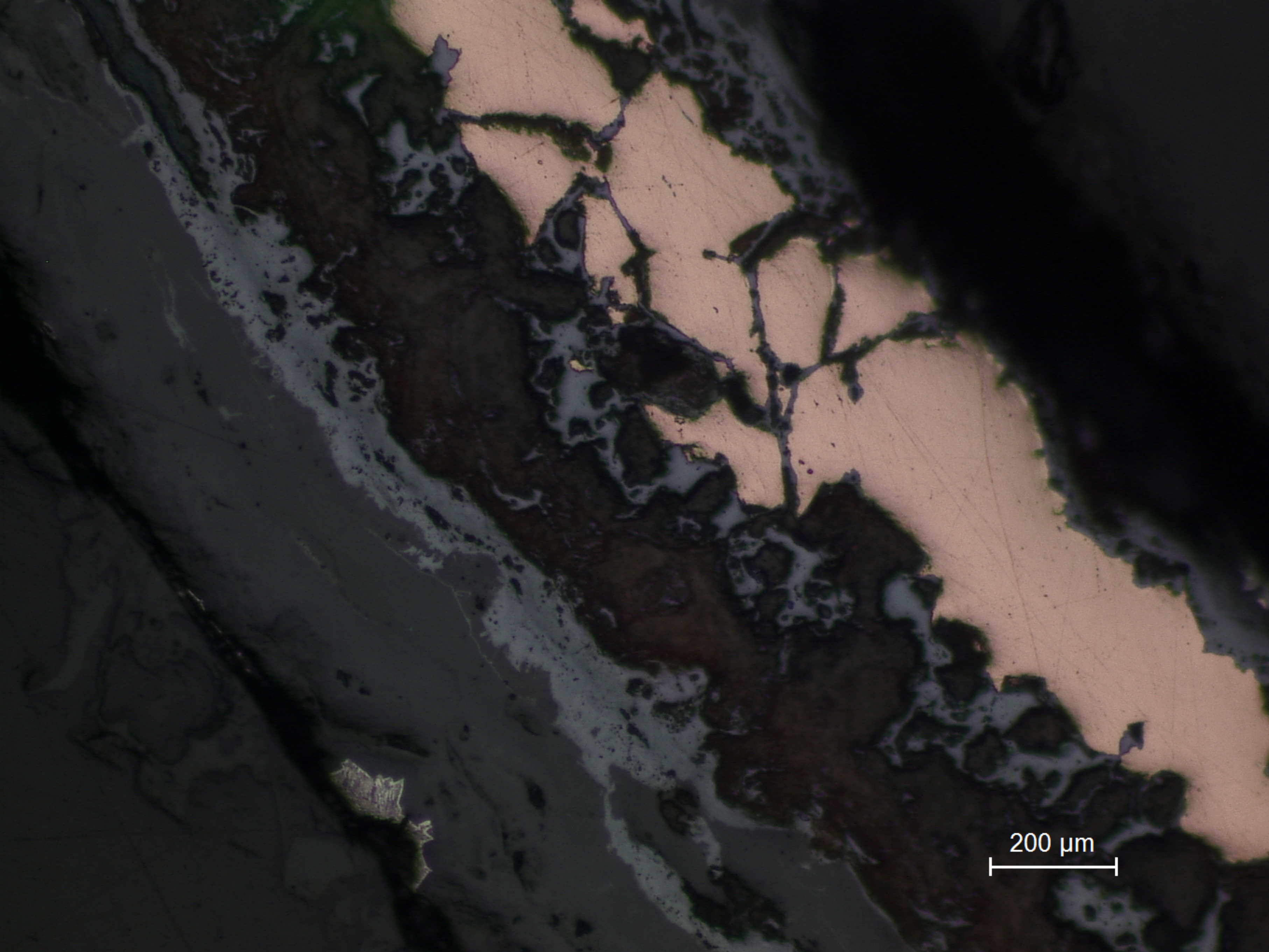
General view of the longitudinal section: different layers of corrosion products, containing high amounts of chlorides and some sulfides; a small amount of metal is remaining in the middle.

B50.2

Large recrystallized grains with annealing twins (etchant: aqueous FeCl_3).

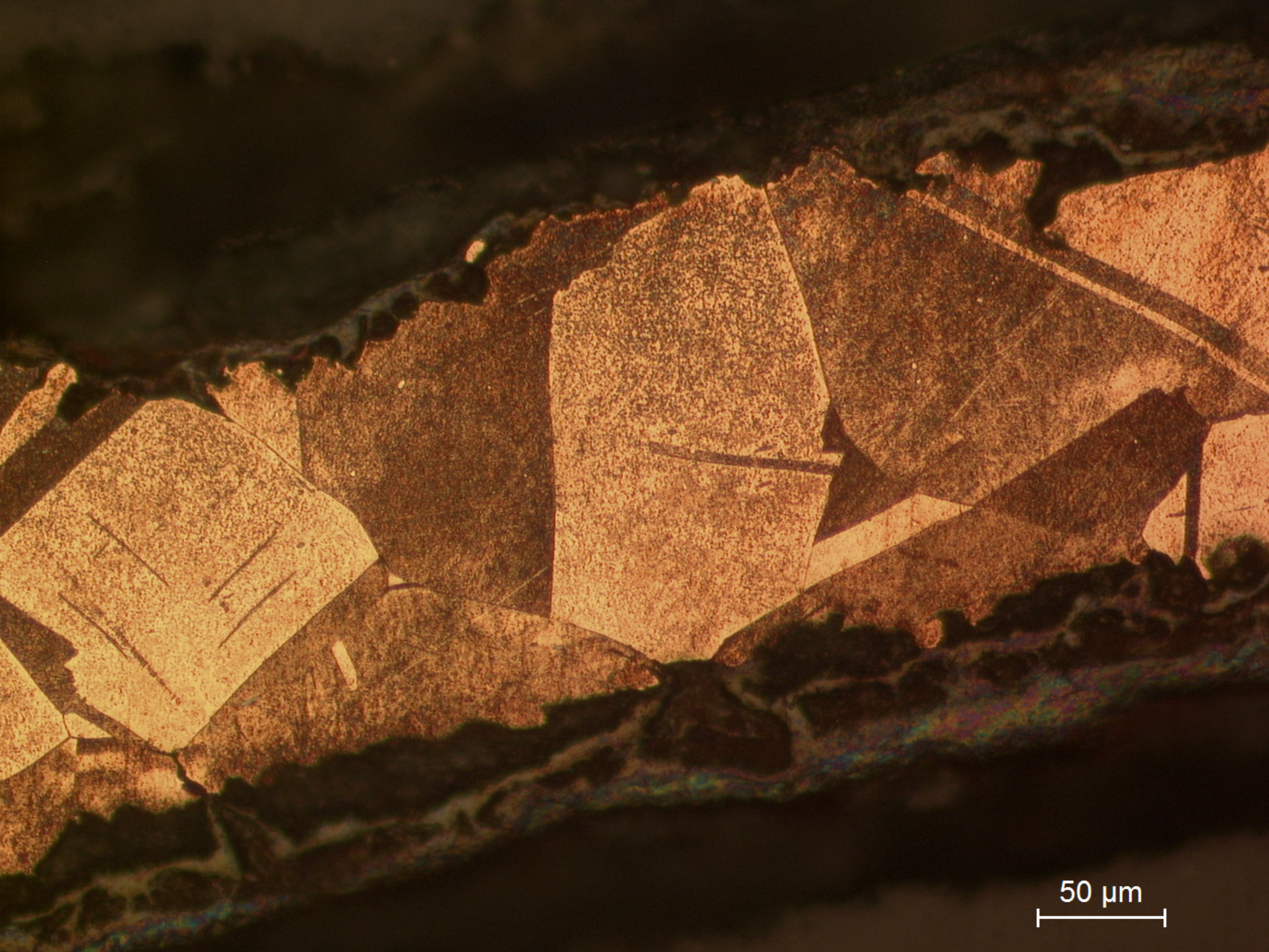
B50.3

Detail of preferential corrosion along annealing twin plane (etchant: aqueous FeCl_3).



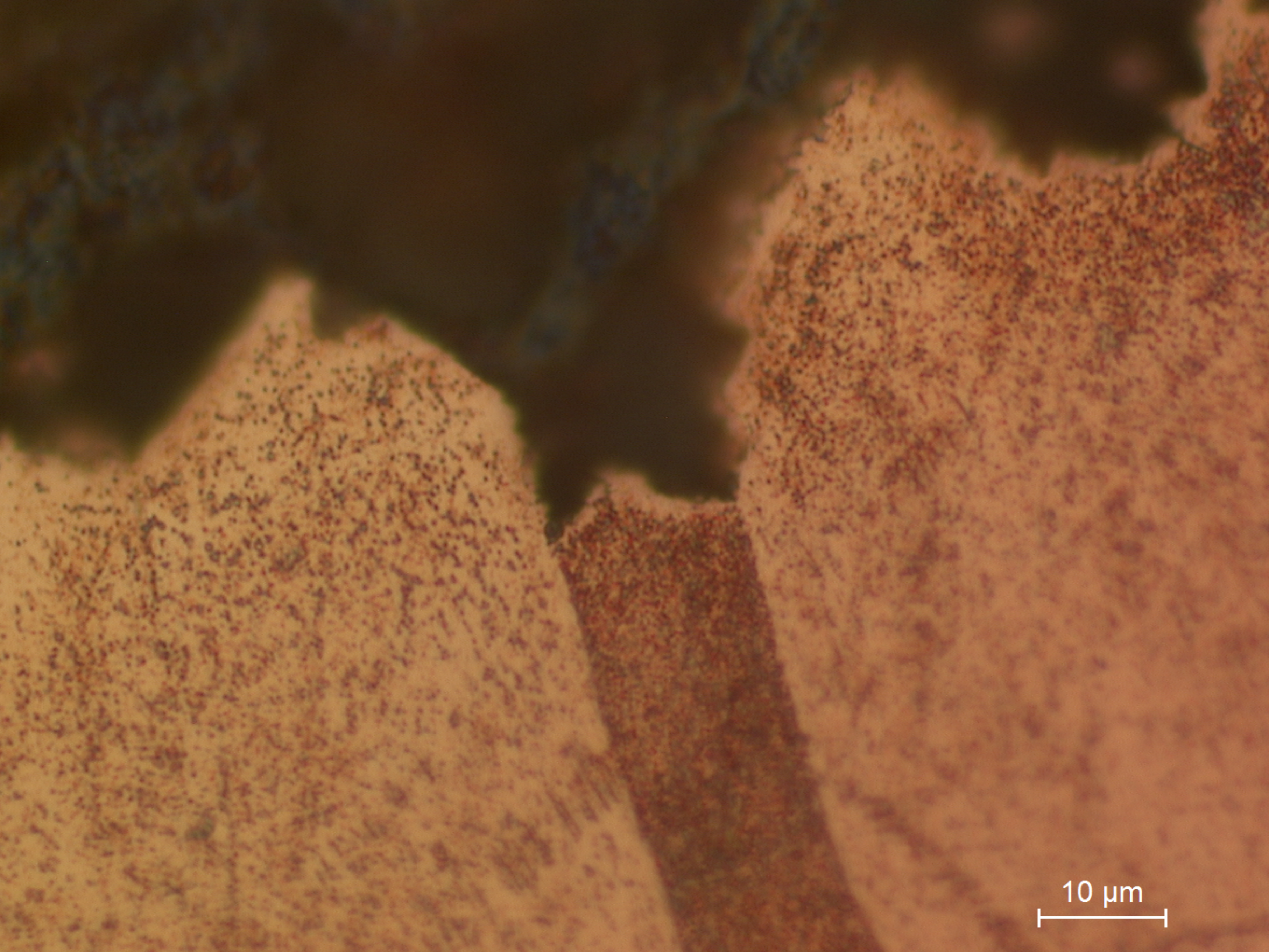
200 μm

B50.1
General view of the longitudinal section: different layers of corrosion products, containing high amounts of chlorides and some sulfides; a small amount of metal is remaining in the middle.



50 μm

B50.2
Large recrystallized grains with annealing twins (etchant: aqueous FeCl_3).



10 μm

B50.3
Detail of preferential corrosion along annealing twin plane (etchant: aqueous FeCl_3).