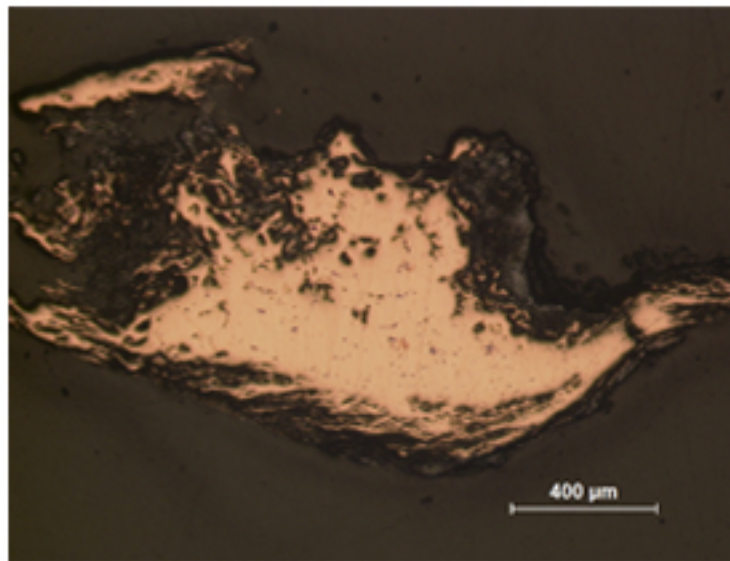
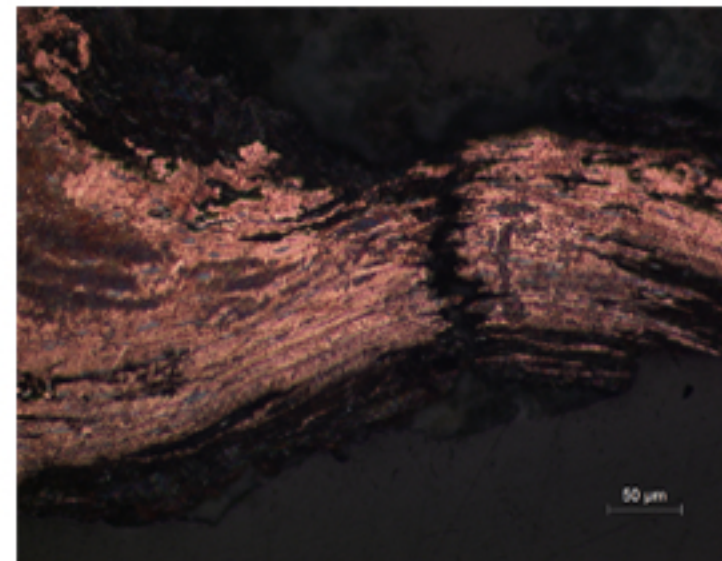


B52 - COPPER TOOL, VI DYNASTY EGYPT



B52.1



B52.2

Identification

Sample: B52
Card reference: S105
Origin: Pyramid of Pepi, Saqqara, Cairo
Location: n/a

Description

Copper poured in an open mold, extremities hammered when cold to harden the metal and confer a cutting edge; inclusions elongated in the direction of deformation. Very small sample taken at notched end of large chisel end.

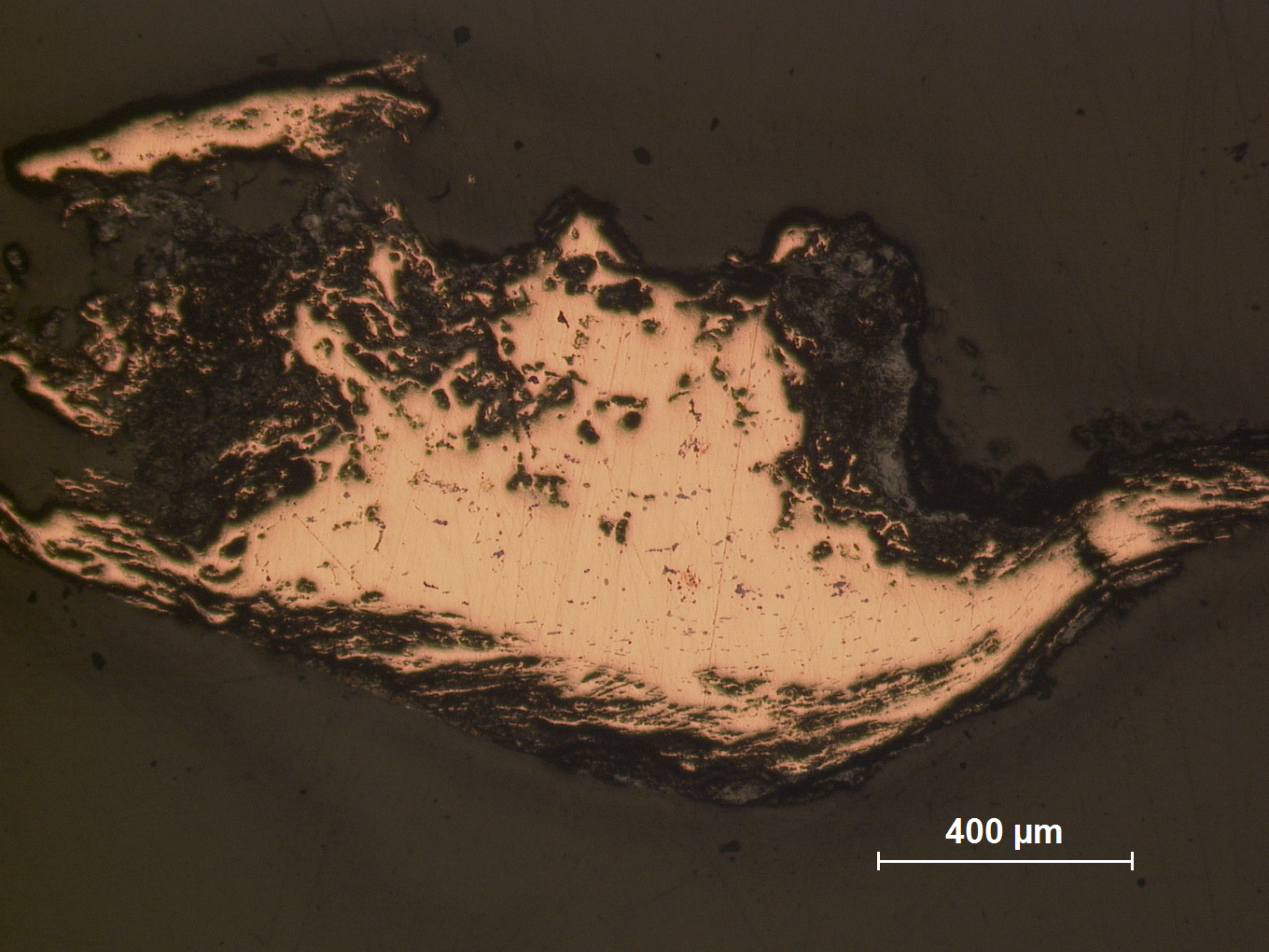
Figure captions

B52.1

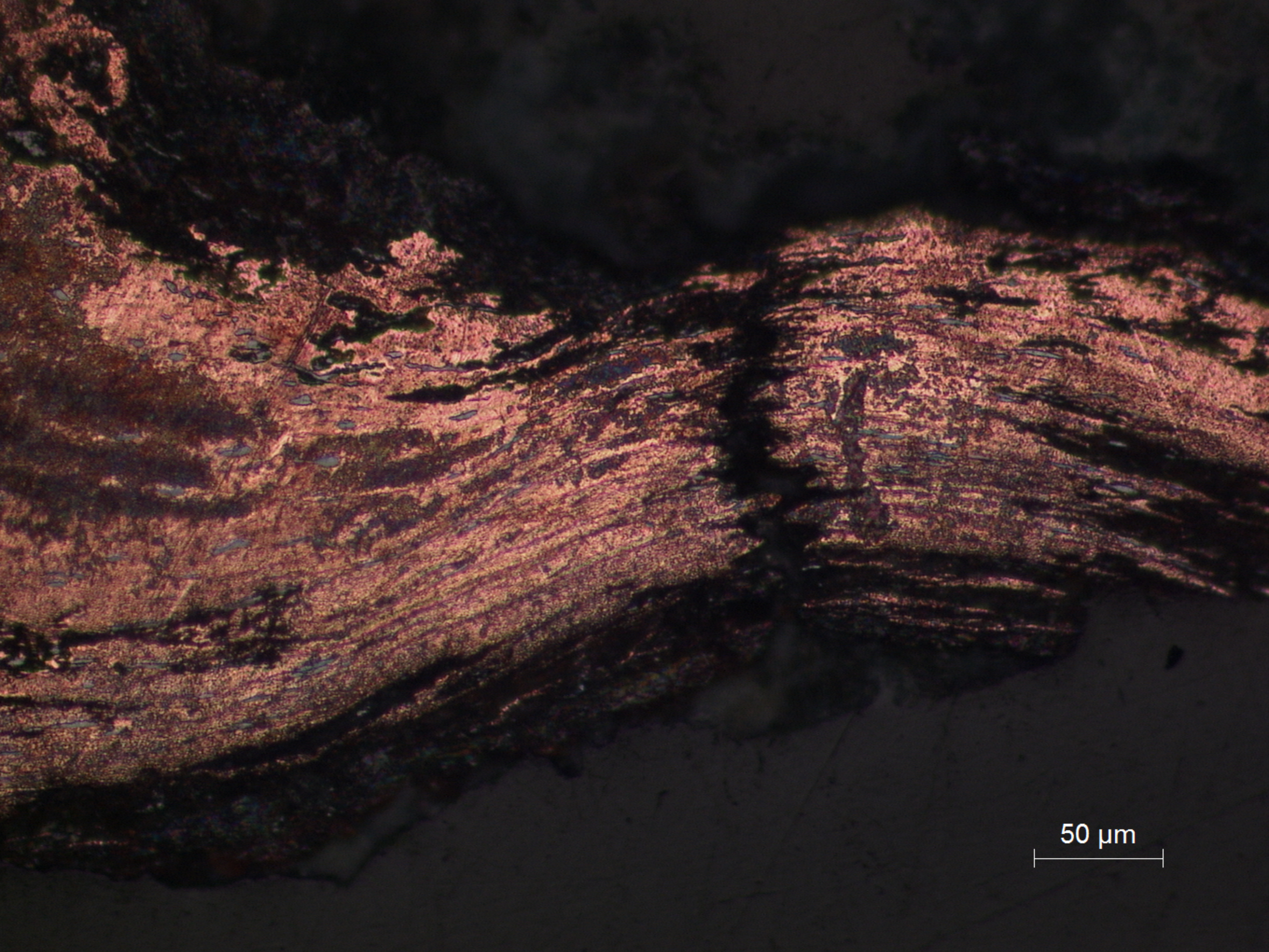
General view; very small sample showing on the right distorted inclusions due to mechanical deformation.

B52.2

Detail showing inclusions, flow lines and corrosion following the direction of deformation (etchant: aqueous FeCl_3).



B52.1
General view; very small sample showing on the right distorted inclusions due to mechanical deformation.



50 μm

B52.2
Detail showing inclusions, flow lines and corrosion following the direction of deformation (etchant: aqueous FeCl_3).