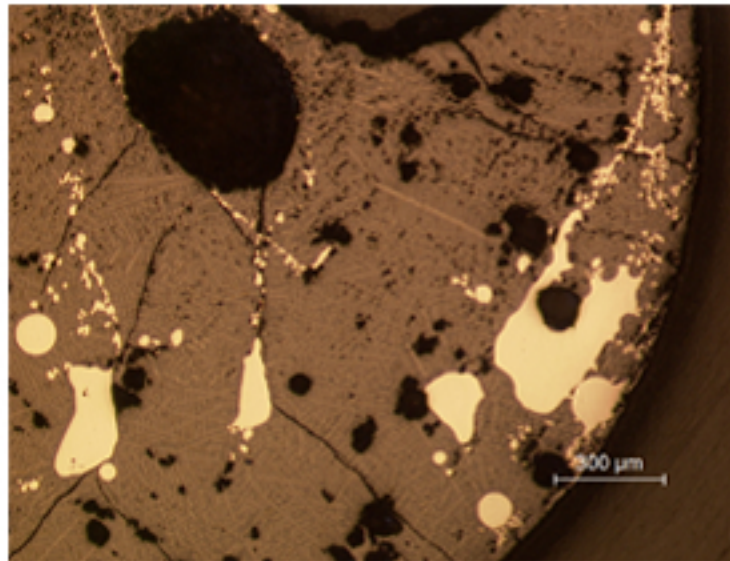
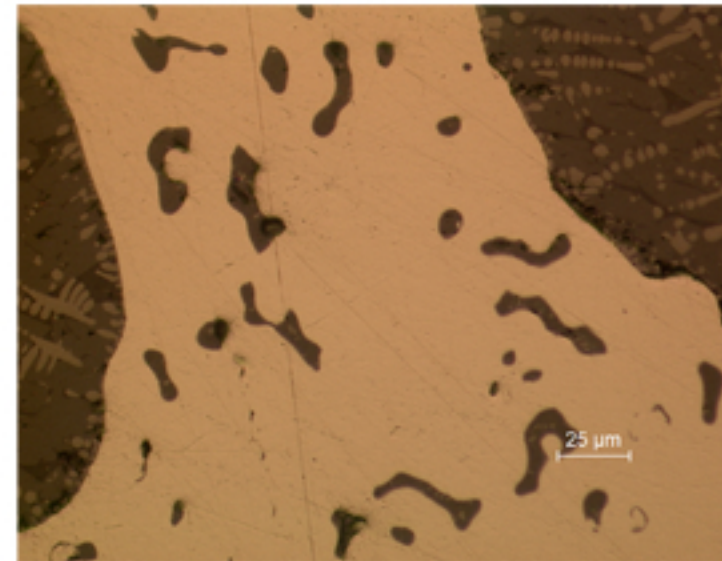


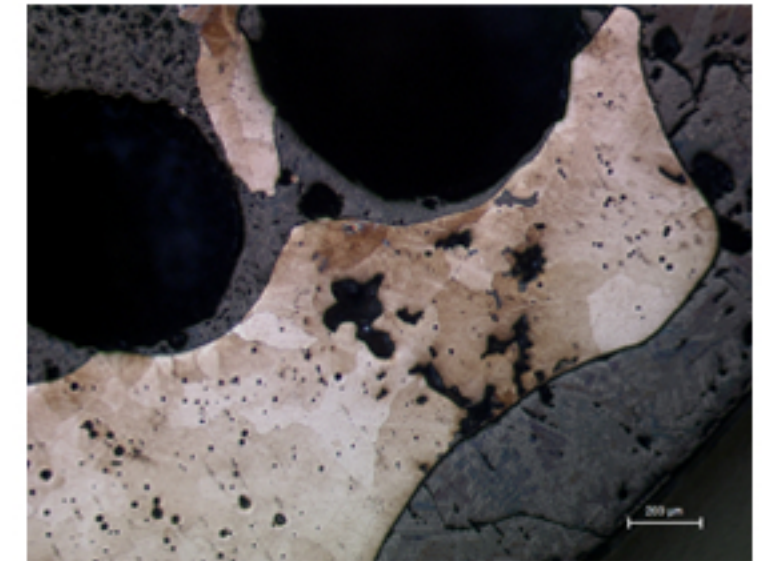
## B63 - PROTOHISTORIC IRON



B63.1



B63.2



B63.3

### Identification

**Sample:** B63 (B64)

**Card reference:** S107

**Origin/Location:** n/a

### Description

A fragment of ore has been heated in the blowpipe on a piece of wood charcoal to allow reduction. Drops of molten iron have formed in the mass of the smelted mineral. The crystalline structure of the iron is evident.

### Figure captions

B63.1

General view, showing small metallic areas (droplets of iron), pores and dendrites of iron oxide in a glassy matrix (slag).

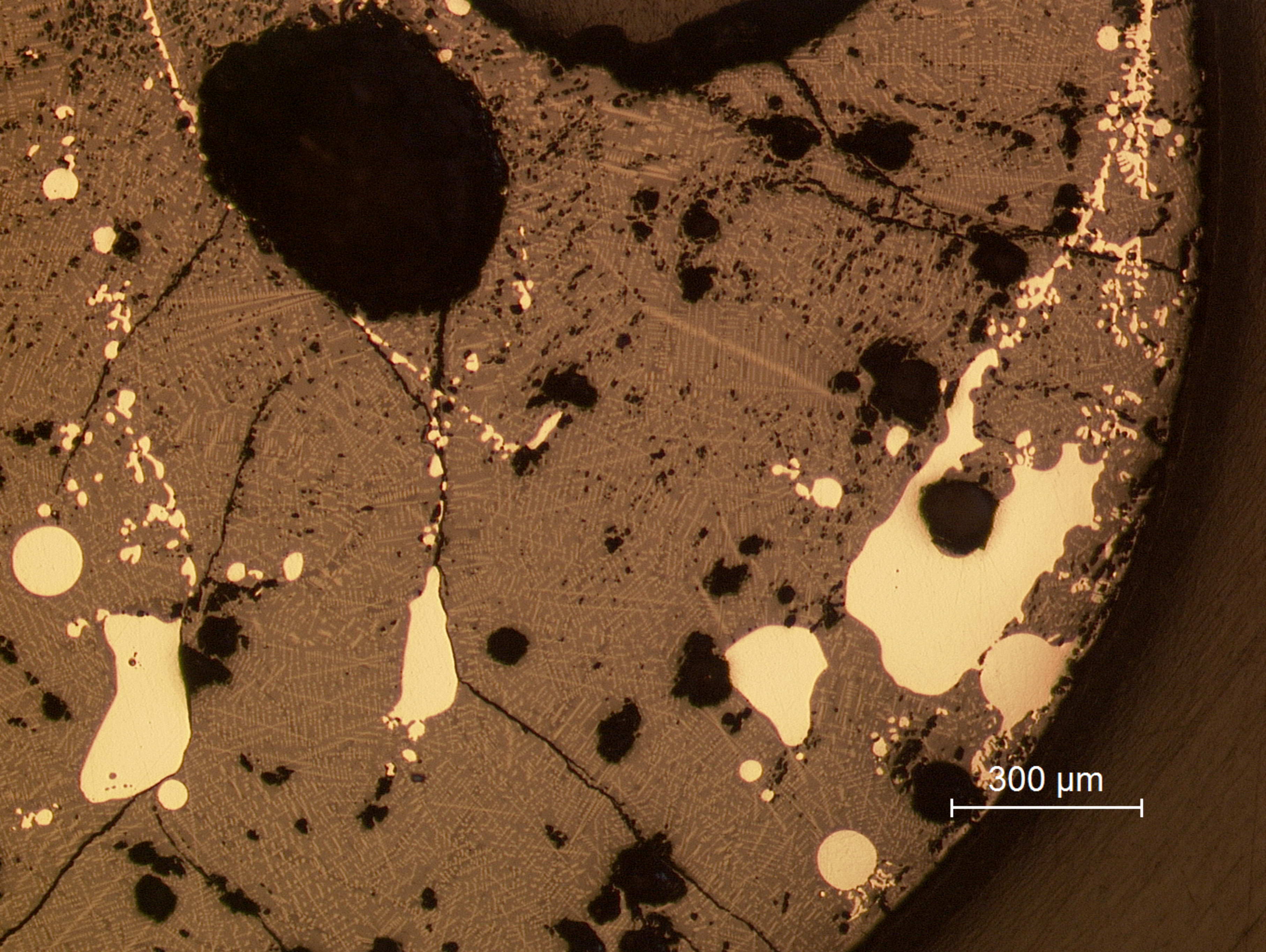
B63.2

Detail of the metallic phase with many inclusions.

B63.3

Detail of the metallic phase showing the irregular size of the grains and many pores (etchant: Nital 4%).

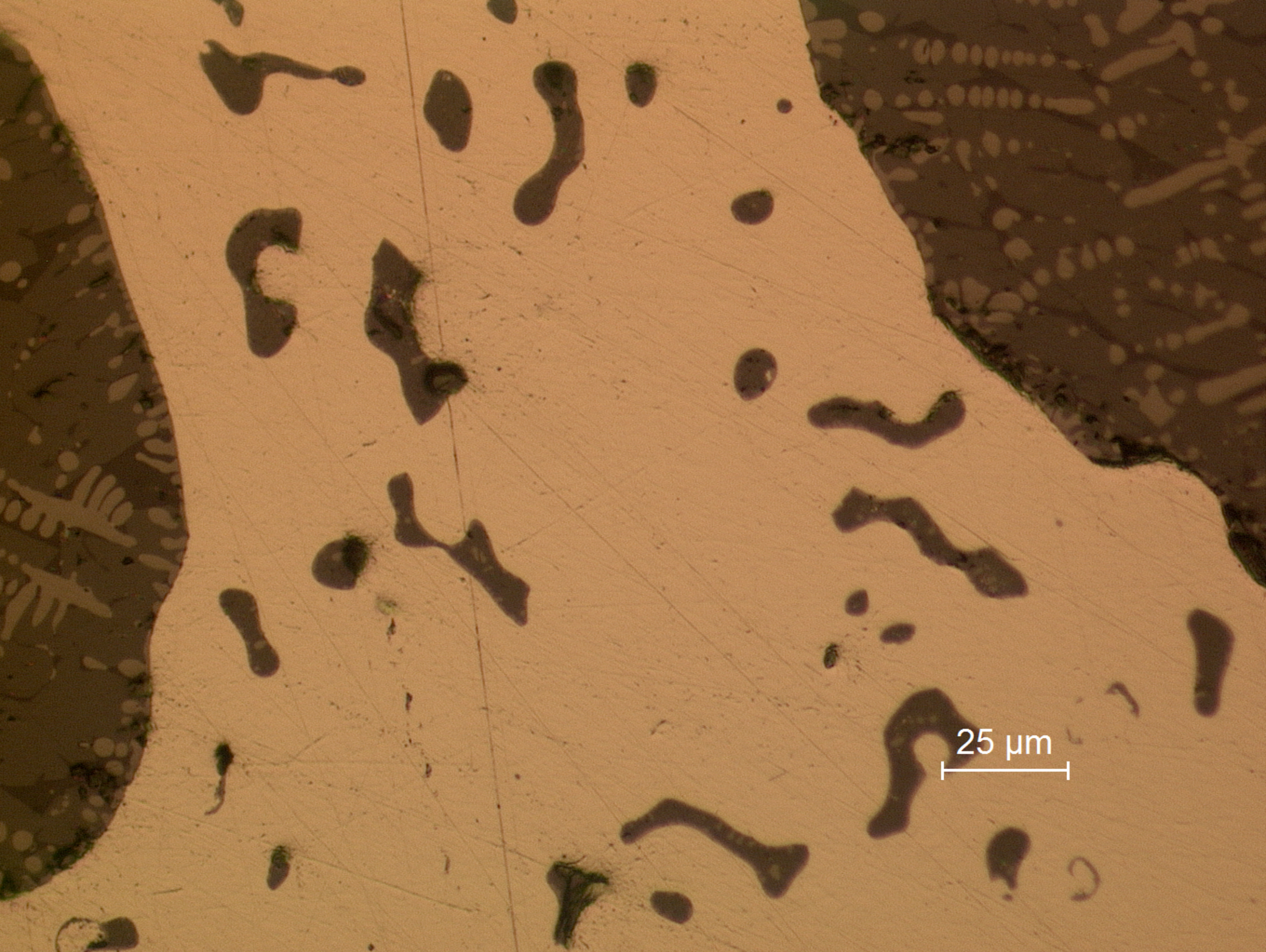




300 μm

**B63.1**  
General view, showing small metallic areas (droplets of iron), pores and dendrites of iron oxide in a glassy matrix (slag).

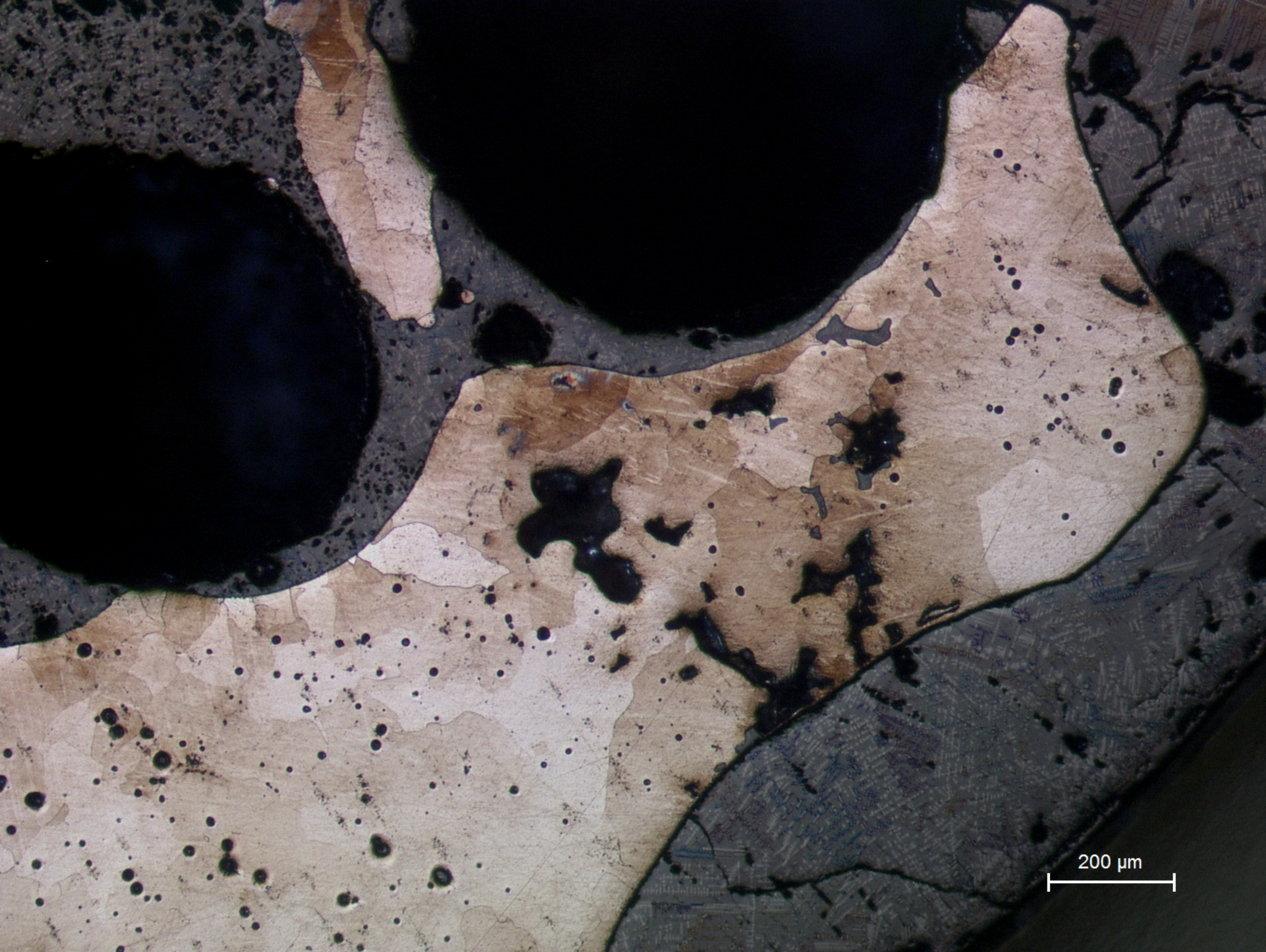




25 μm

B63.2  
Detail of the metallic phase with many inclusions.





200 μm

**B63.3**  
Detail of the metallic phase showing the irregular size of the grains and many pores (etchant: Nital 4%).