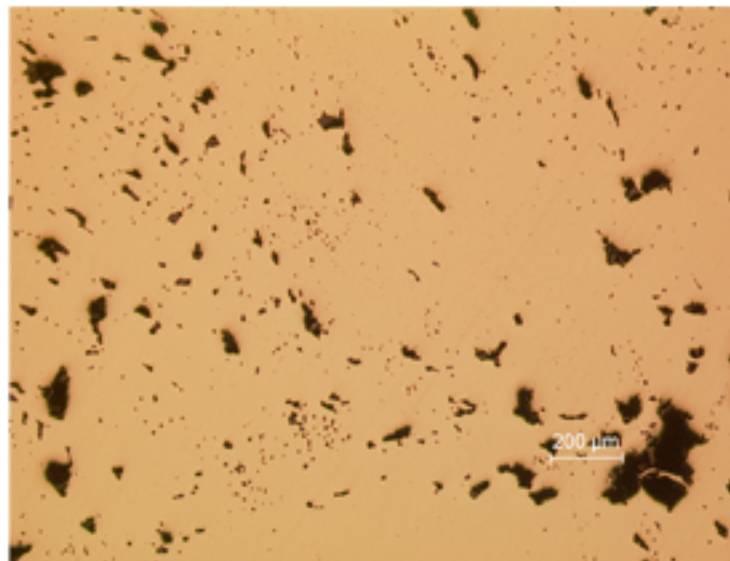


## B66 - PUDDLE IRON



B66.1

### Identification

**Sample:** B66 (B67)  
**Card reference:** S108  
**Origin:** Meuse XIX  
**Location:** n/a

### Description

End of an ingot prepared commercially in a rectangular shape ready to be forged. Longitudinal section showing how metal has been stretched, clearly indicating the direction of rolling.

### Figure captions

B66.1

Transversal section: many impurities and pores of different sizes.

B66.2

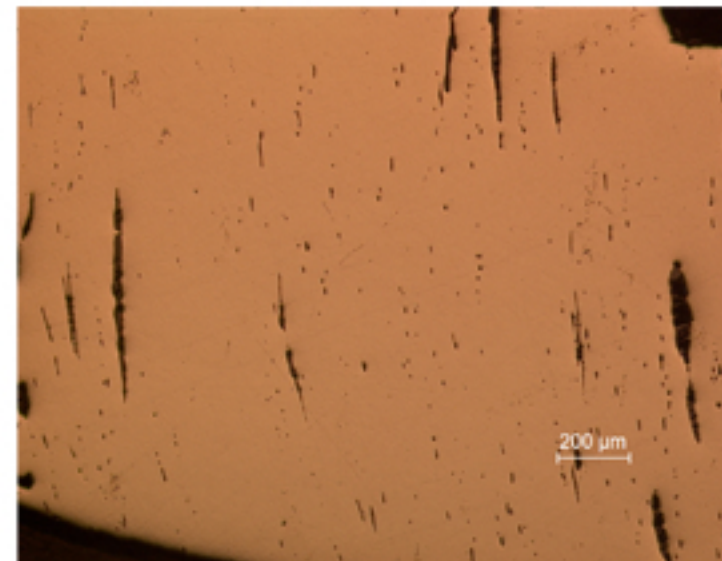
Longitudinal section: inclusions elongated in the direction of working.

B66.3

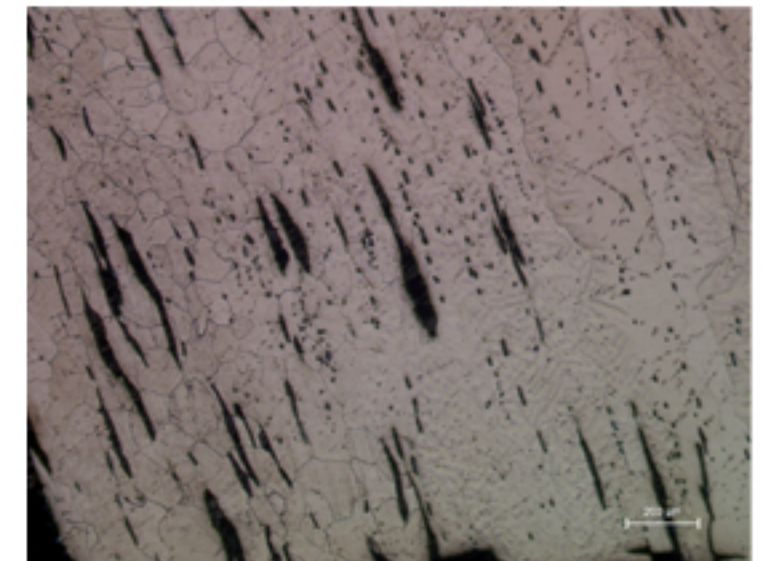
Longitudinal section after etching: ferrite grains of heterogeneous sizes (etchant: Nital 4%).

B66.4

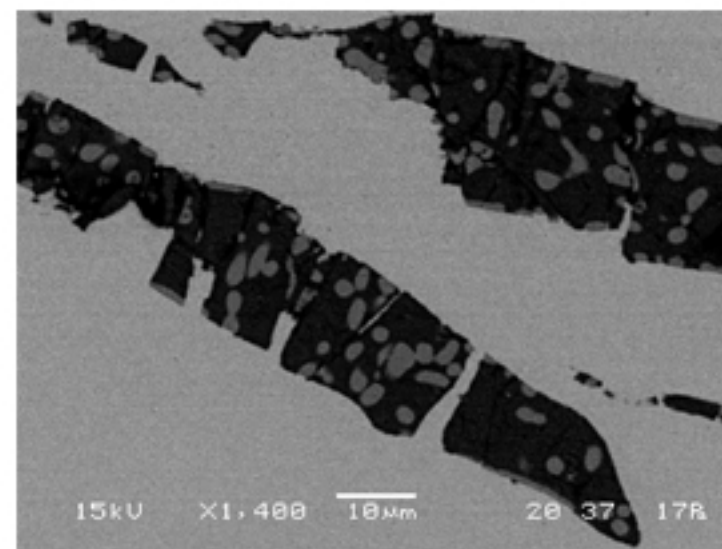
SEM image: detail of inclusions (containing Mn, P, Si, Ca) dispersed in the iron matrix.



B66.2

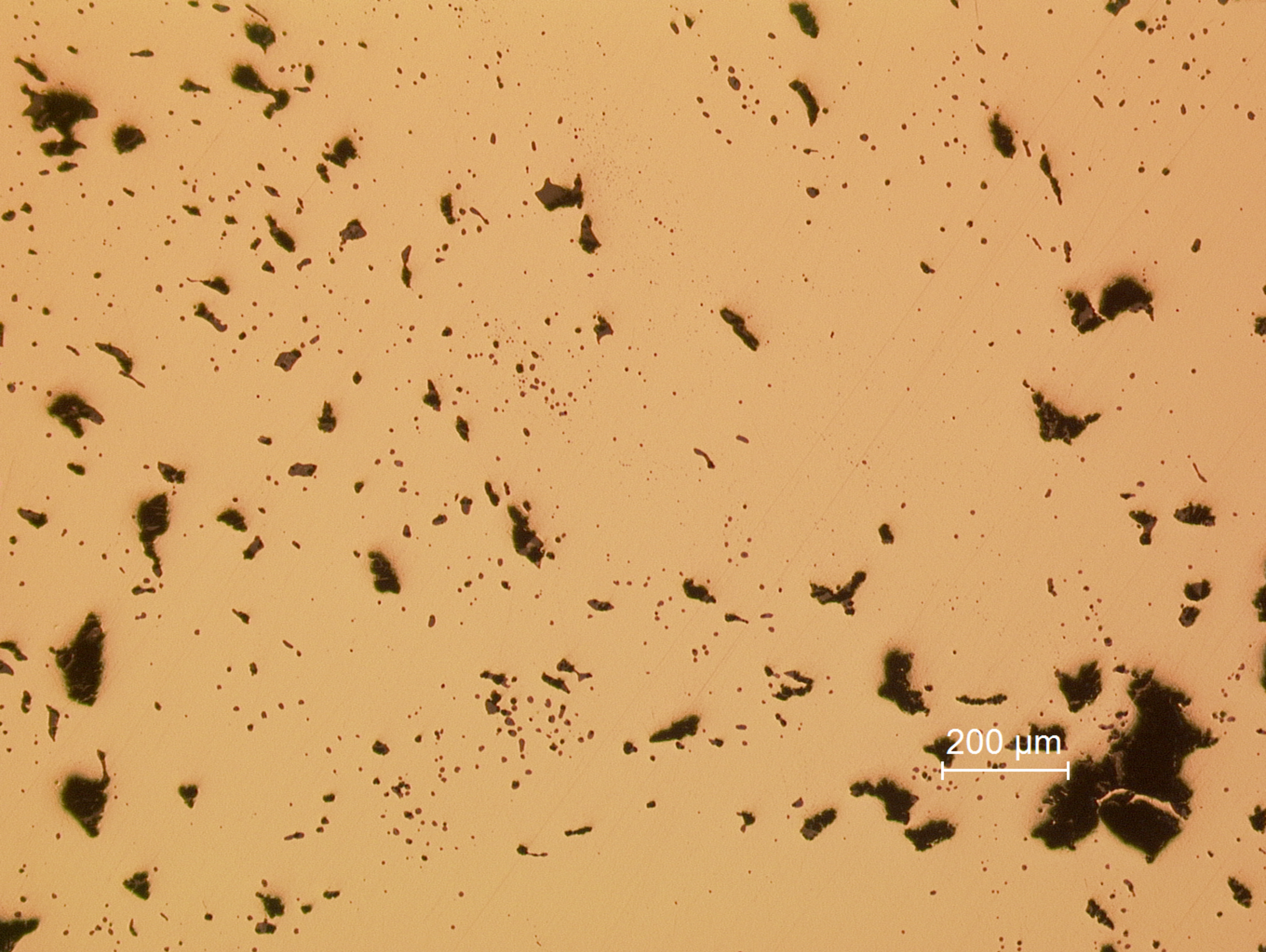


B66.3



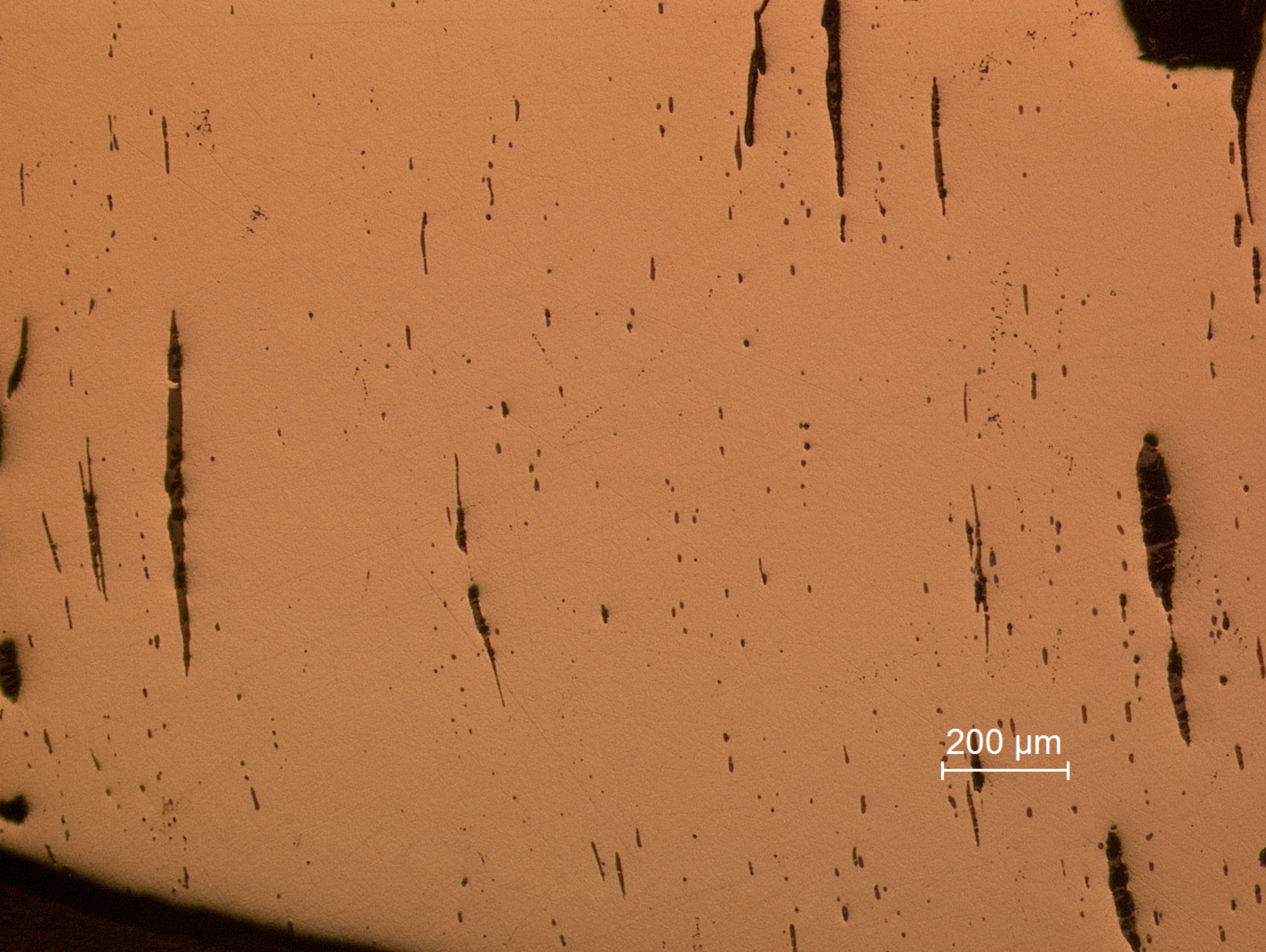
B66.4





**B66.1**  
Transversal section: many impurities and pores of different sizes.

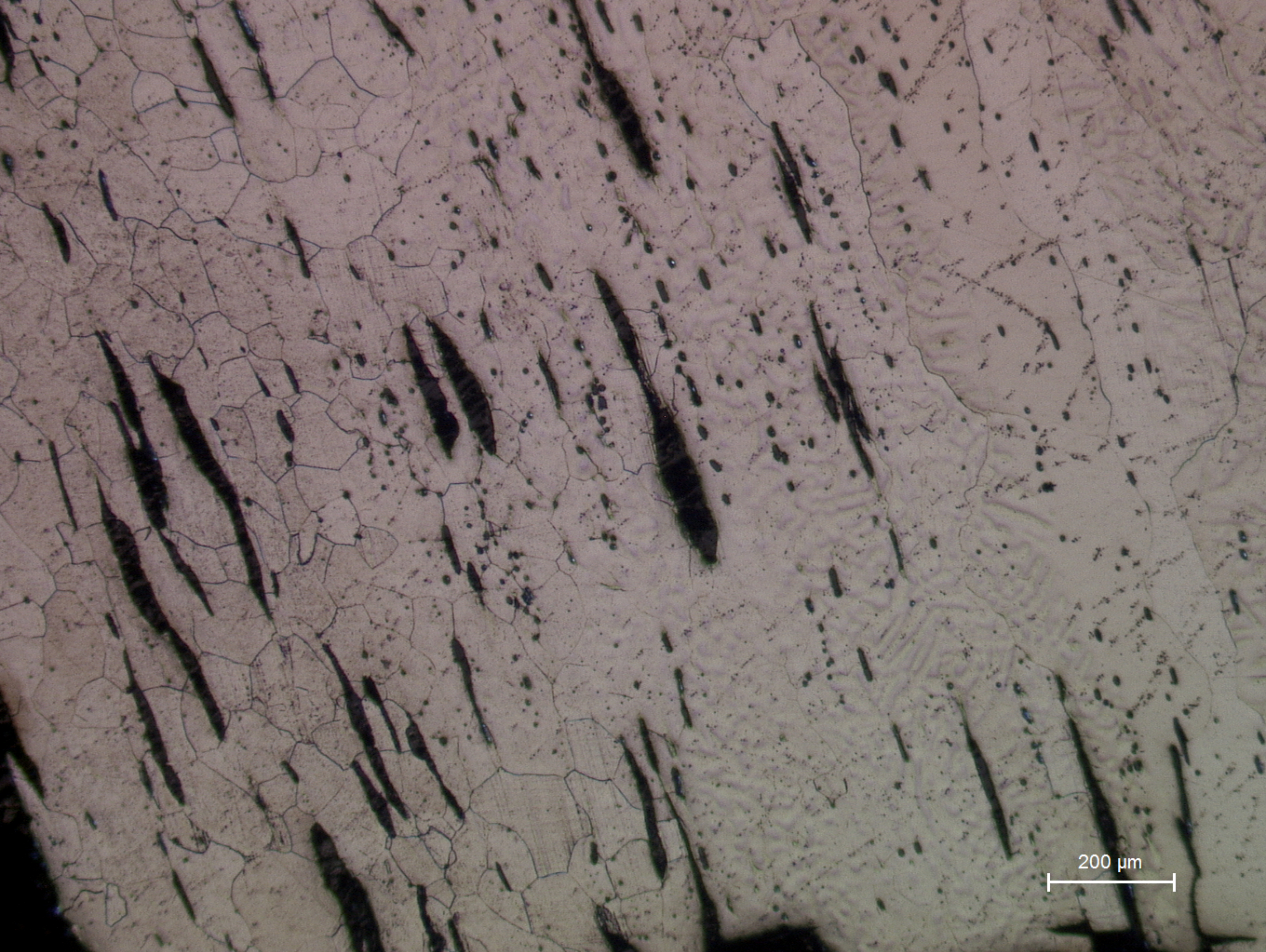




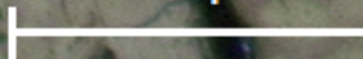
200 μm

**B66.2**  
Longitudinal section: inclusions elongated in the direction of working.



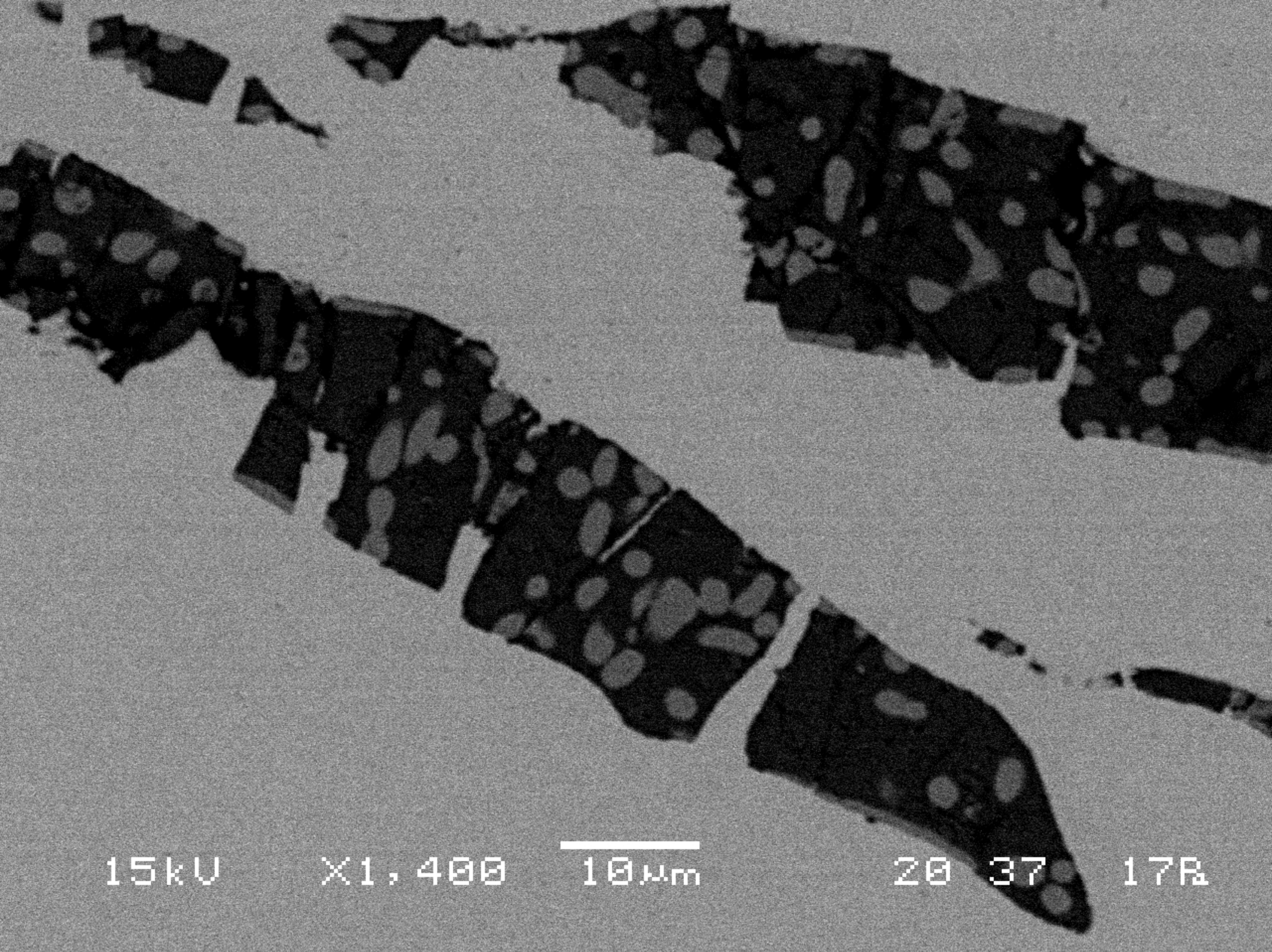


200 μm



**B66.3**  
Longitudinal section after etching: ferrite grains of heterogeneous sizes (etchant: Nital 4%).





15kV

X1,400

10µm

20

37

17R

B66.4  
SEM image: detail of inclusions (containing Mn, P, Si, Ca) dispersed in the iron matrix.