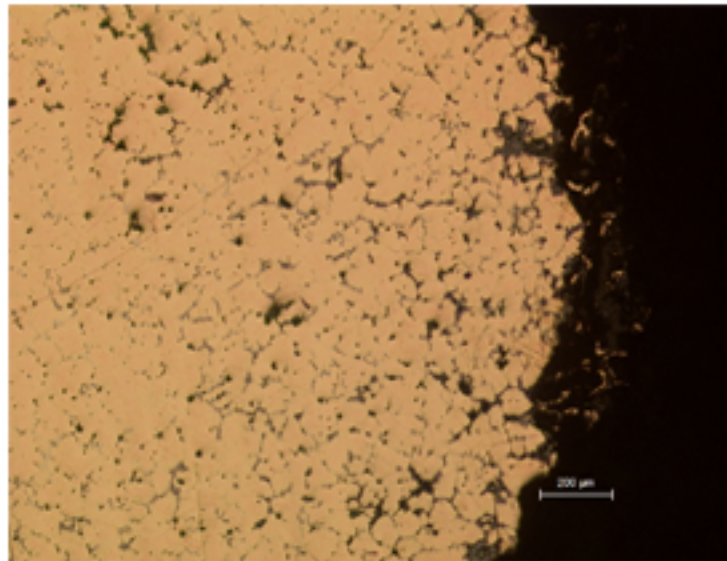


B78 - BRONZE BRACELET



B78.1

Identification

Sample: B78

Card reference: C61

Origin/Location: n/a

Description

Example of corrosion developed under the epidermis of a bronze. At the surface there are large quantities of corrosion products, only the metallic core is left. The bronze is rich in tin, about 10% of the grains still have an arrangement revealing the casting structure. The bracelet was cast to produce its definitive form.

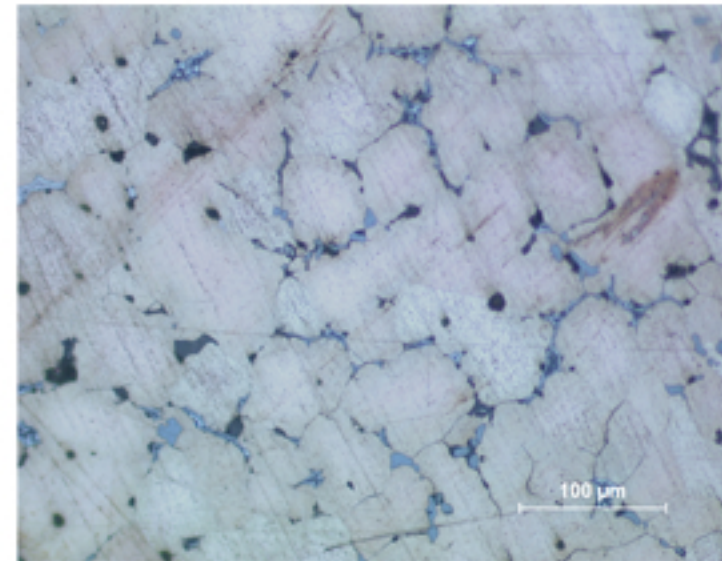
Figure captions

B78.1

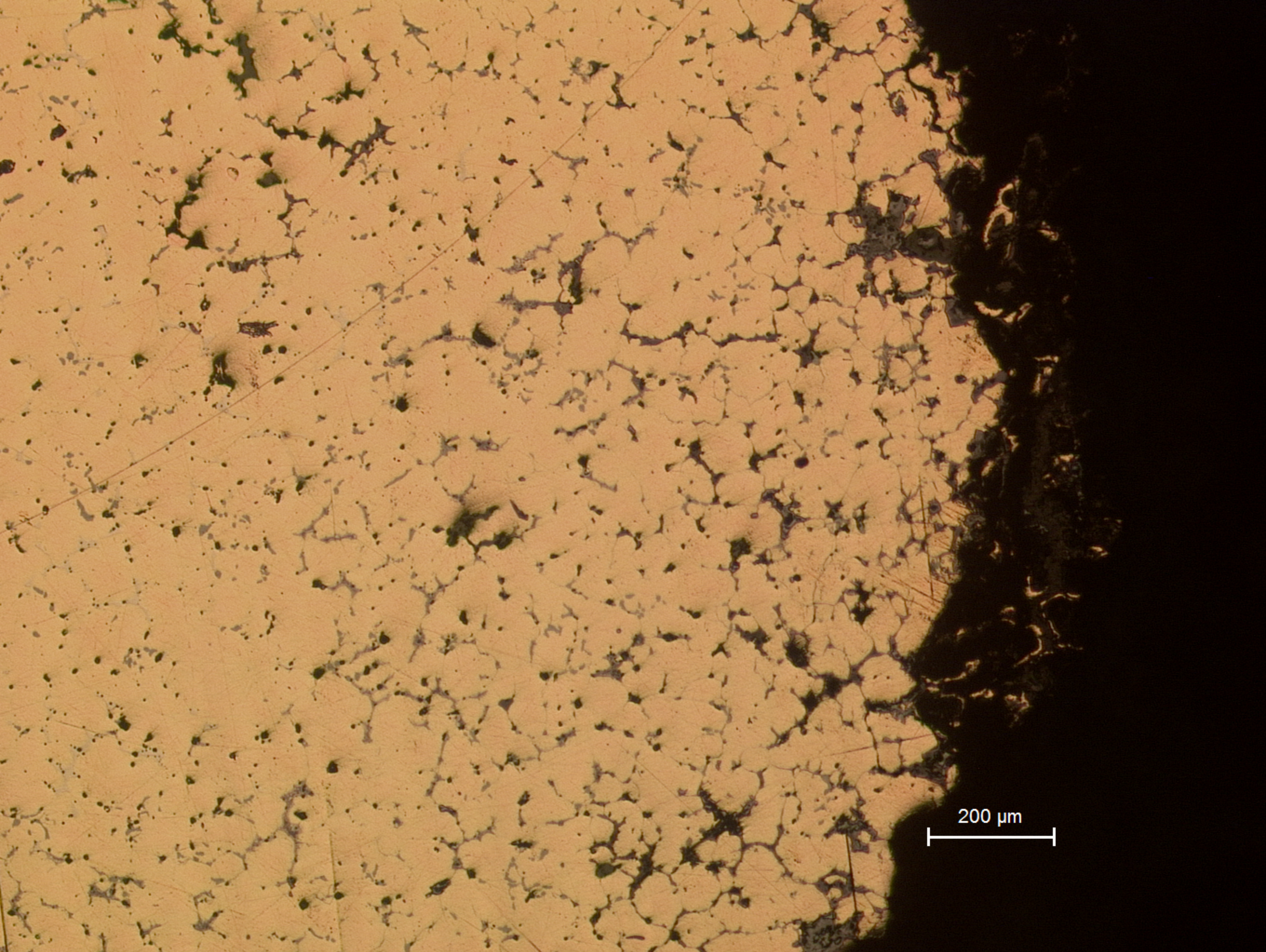
General view, showing intergranular corrosion with remnants of the Sn-rich phase (on the right).

B78.2

Detail of the core; grains surrounded by the eutectoid phase (white) and inclusions (Pb in dark grey areas and sulfide in blue grey areas) (etchant: aqueous FeCl_3).

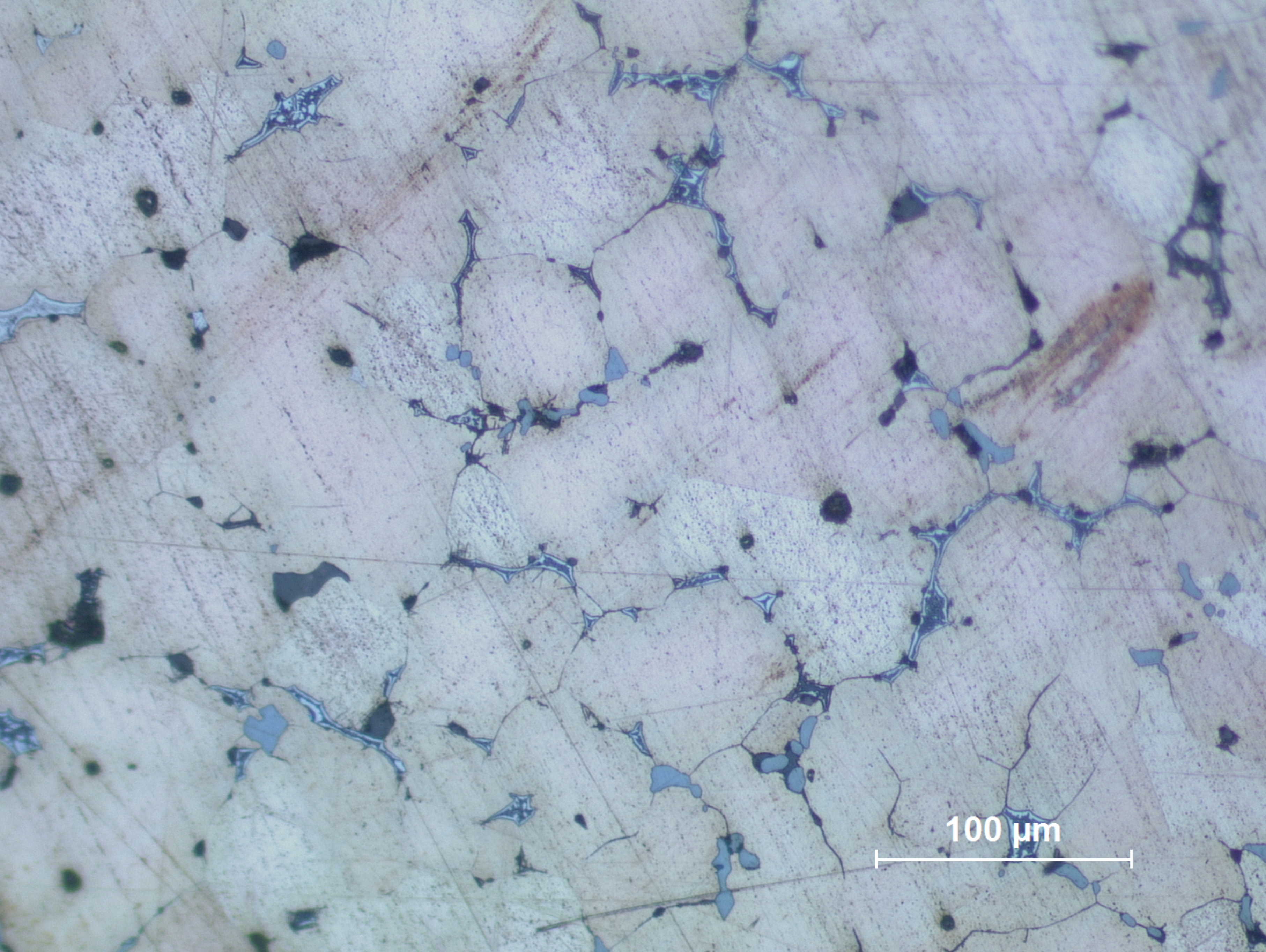


B78.2



200 μm

B78.1
General view, showing intergranular corrosion with remnants of the Sn-rich phase (on the right).



100 μm

B78.2
Detail of the core; grains surrounded by the eutectoid phase (white) and inclusions (Pb in dark grey areas and sulfide in blue grey areas) (etchant: aqueous FeCl_3).