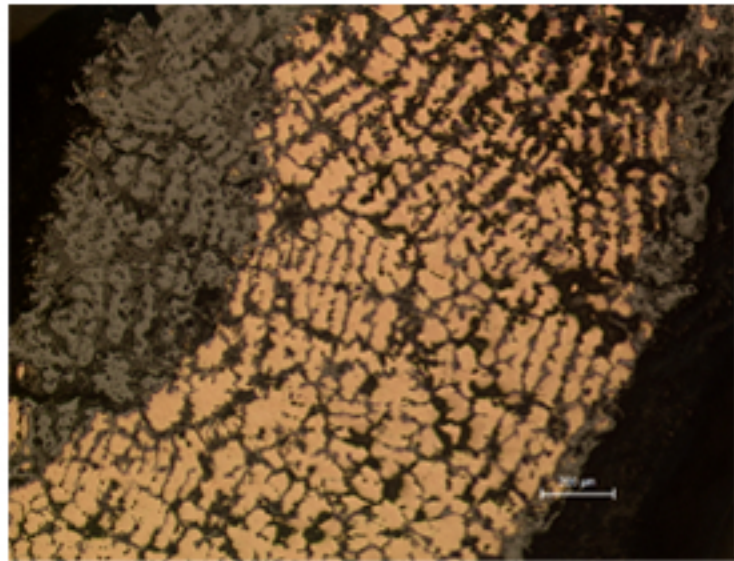
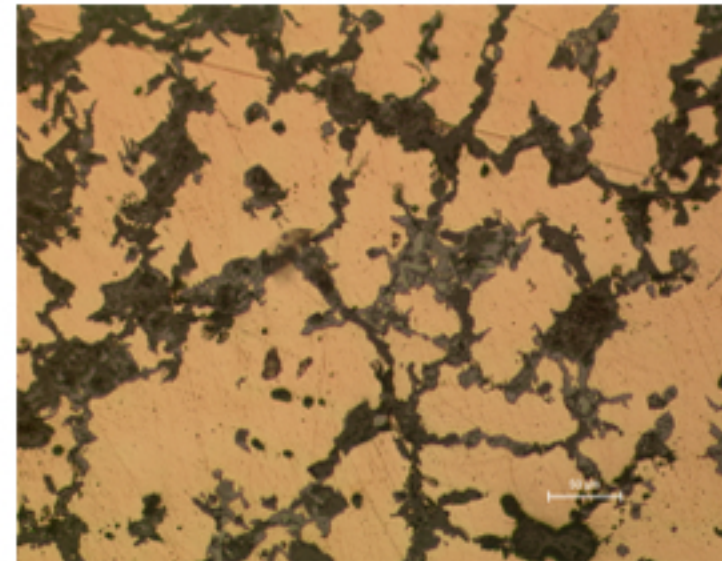


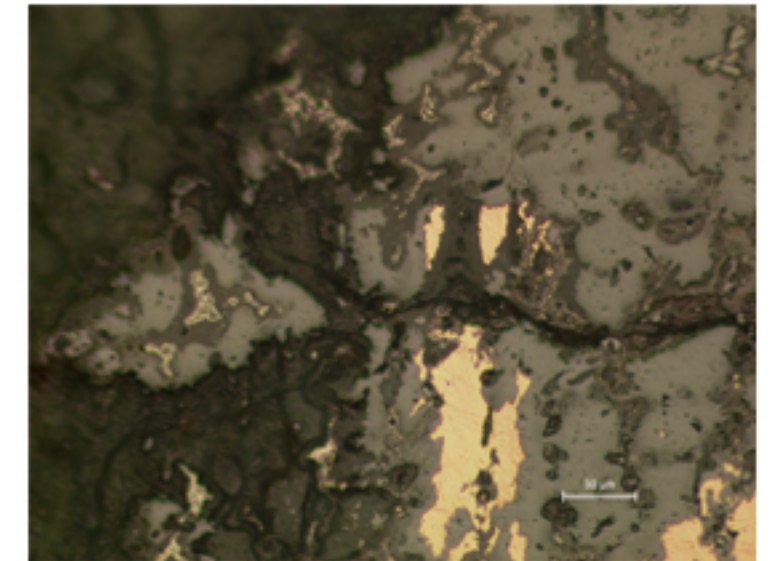
B81 - BRACELET FRAGMENT



B81.1



B81.2



B81.3

Identification

Sample: B81

Card reference: C63

Origin/Location: Lorraine

Description

Fragment of a bracelet, cast tin bronze. Deep penetration of corrosion, hardly any metallic core is left. Dendritic structure of cast metal.

Figure captions

B81.1

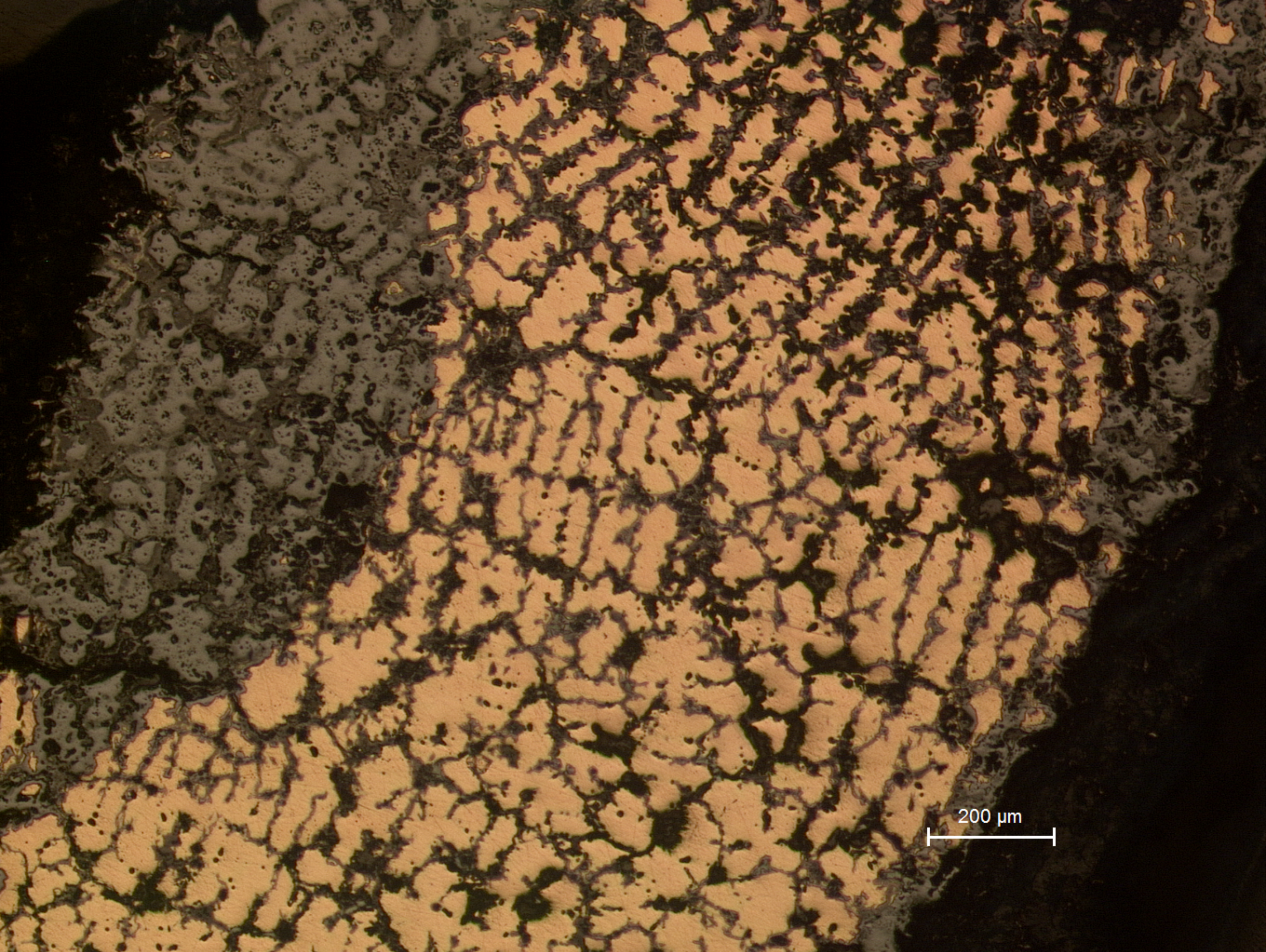
General view, partially corroded section, with 'ghost' dendrites in the corroded area (dark grey, left hand side).

B81.2

Detail of the less corroded area showing many inclusions (mostly Pb) and corrosion in the interdendritic space, in which the Sn-rich phase is partially attacked.

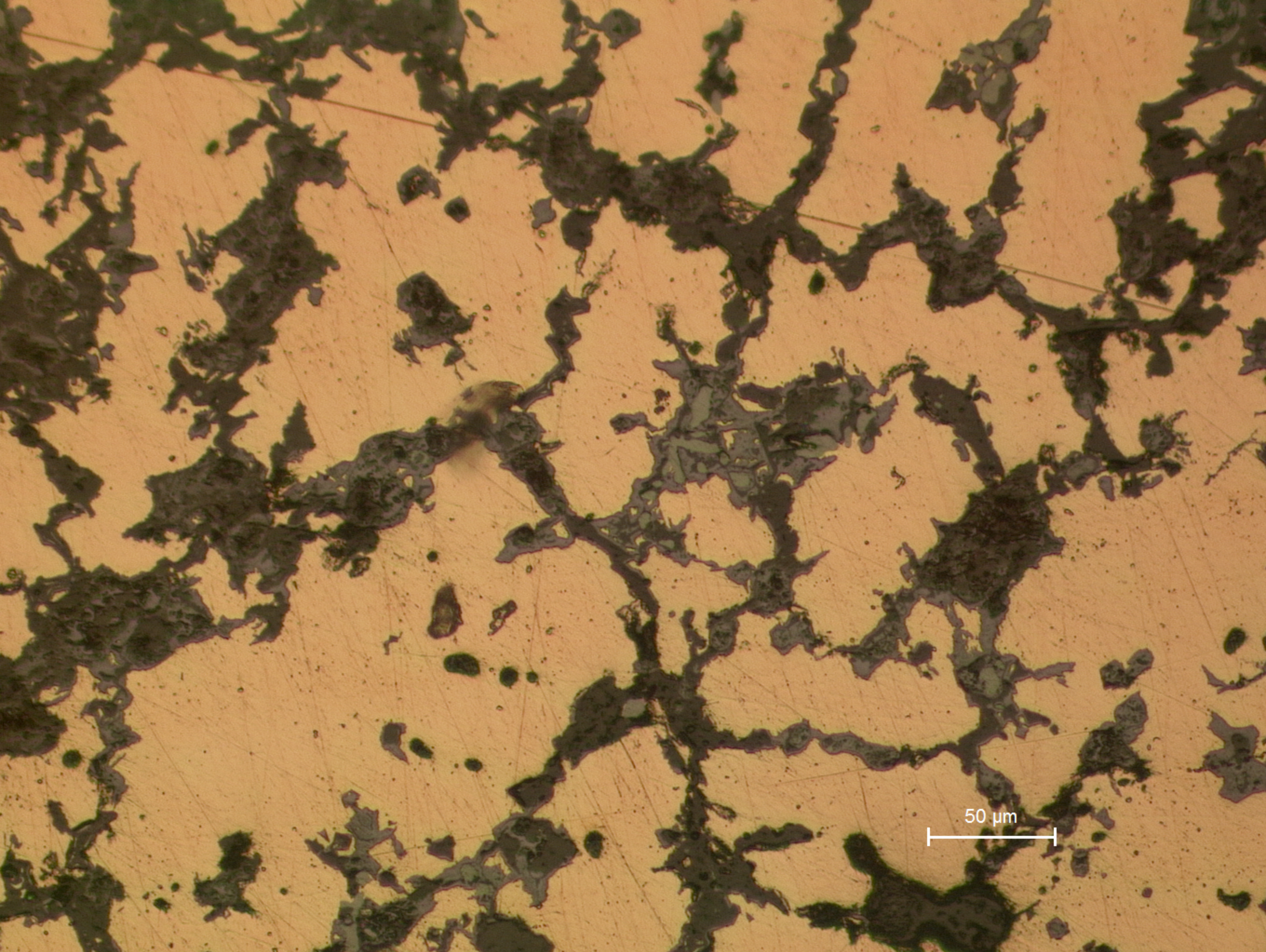
B81.3

Detail of the corroded area showing remains of the matrix (bright white) and eutectoid phase (light grey) in the middle of corrosion products.



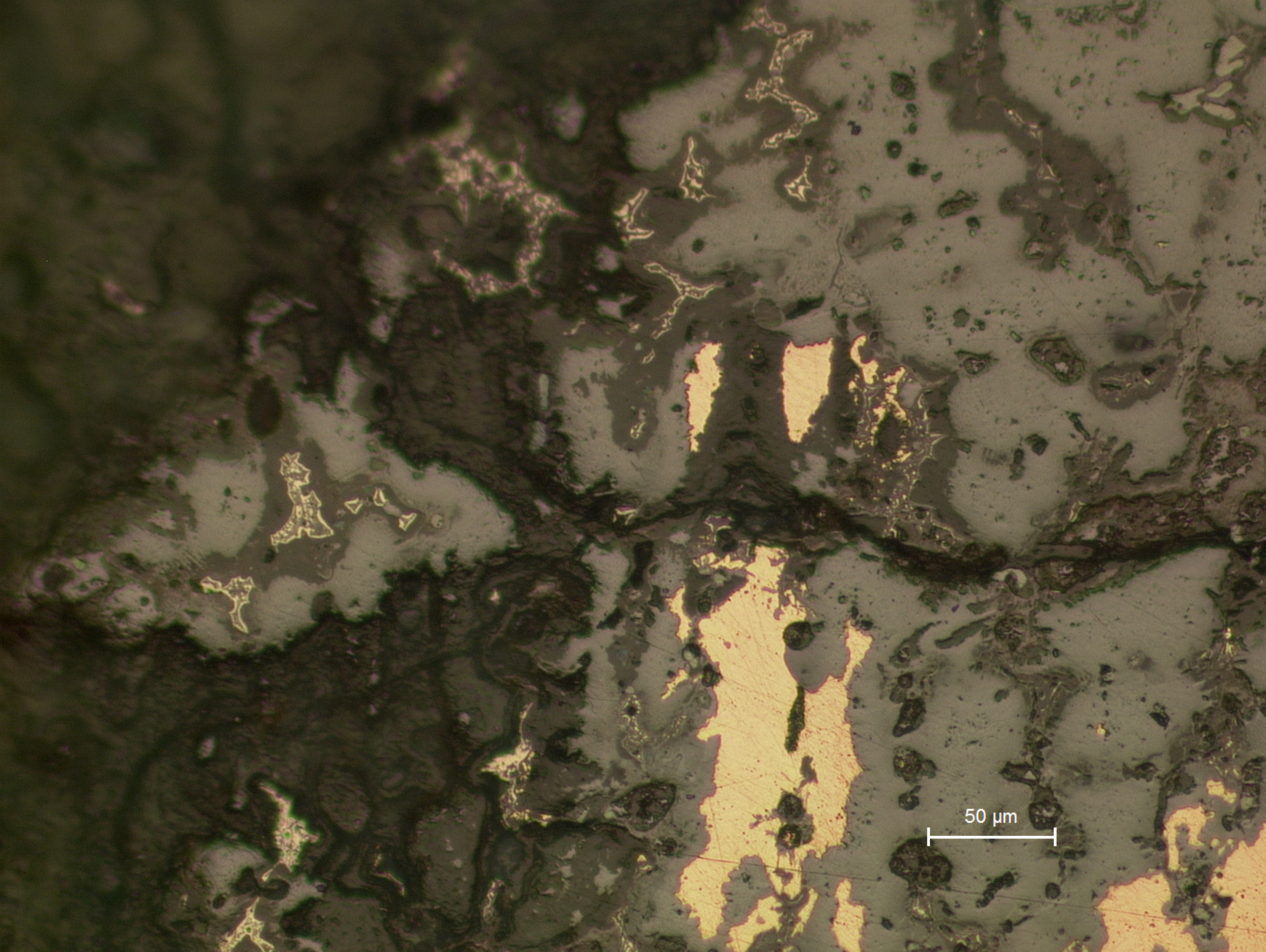
200 μm

B81.1
General view, partially corroded section, with 'ghost' dendrites in the corroded area (dark grey, left hand side).



50 μm

B81.2
Detail of the less corroded area showing many inclusions (mostly Pb) and corrosion in the interdendritic space, in which the Sn-rich phase is partially attacked.



50 μm

B81.3
Detail of the corroded area showing remains of the matrix (bright white) and eutectoid phase (light grey) in the middle of corrosion products.