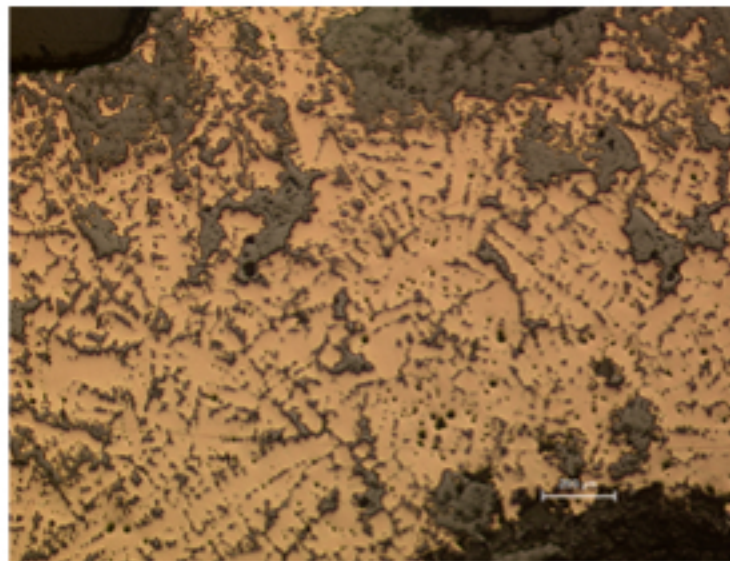
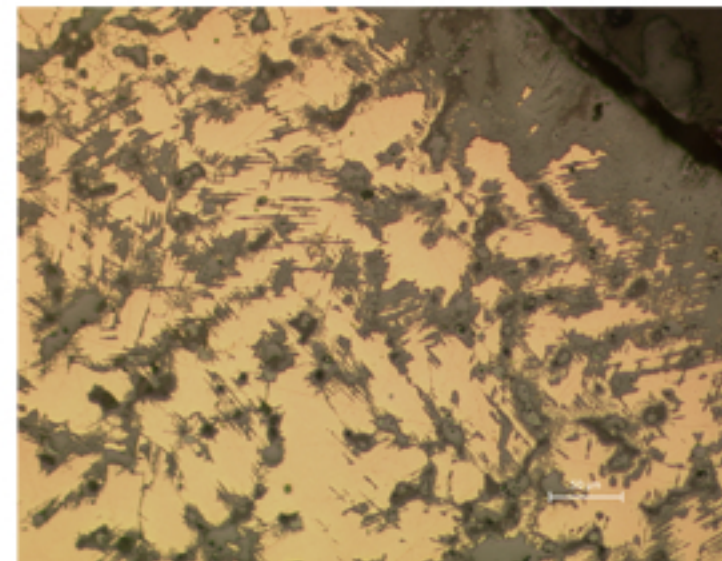


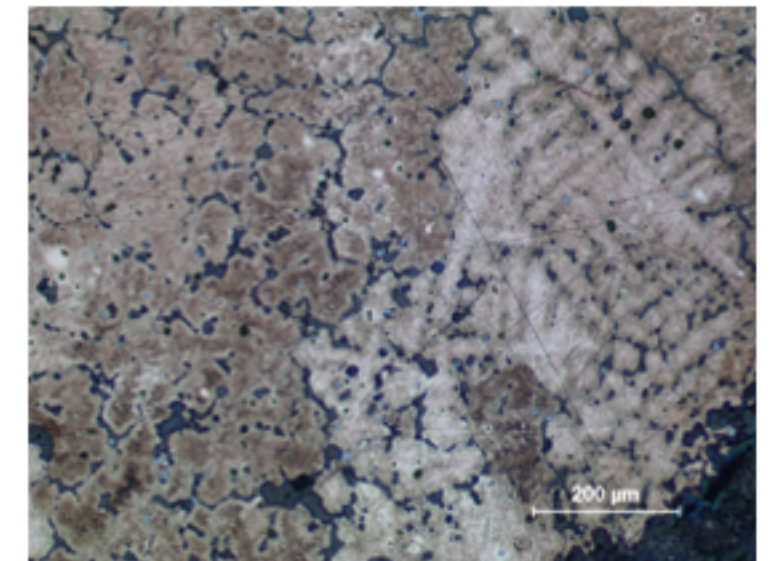
B82 - BRONZE HOLLOW BRACELET



B82.1



B82.2



B82.3

Identification

Sample: B82
Card reference: S115
Origin: Loraine Halstatt
Location: n/a

Description

Made by casting in a mold provided with a cave; the hollow tube being closed by cold working. Dendrites are visible and there was no reheating before closing the tube.

Figure captions

B82.1

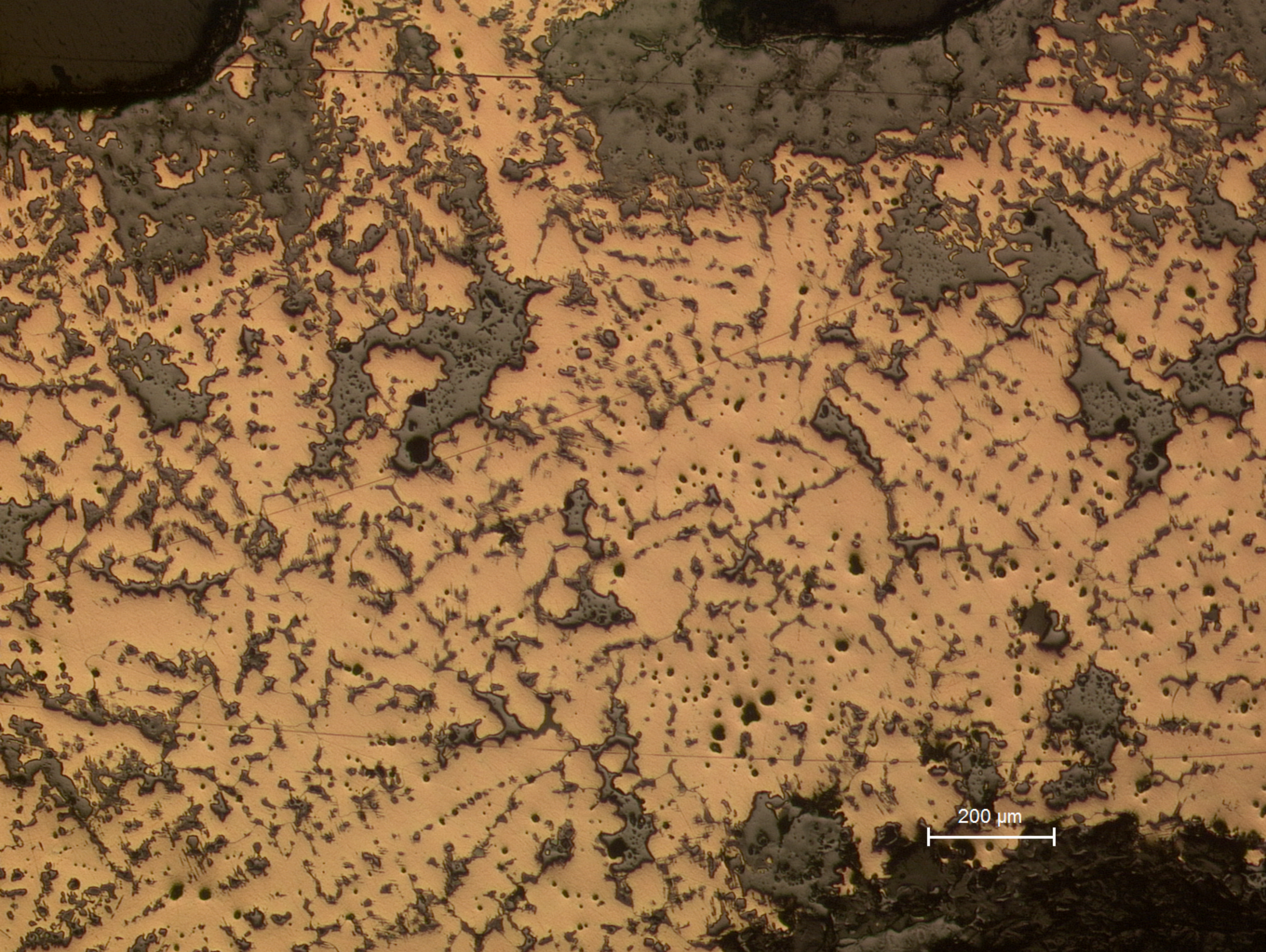
General view: showing radial development of dendrites, penetration of corrosion.

B82.2

Detail showing slip lines, probably due to cold work to close the tube.

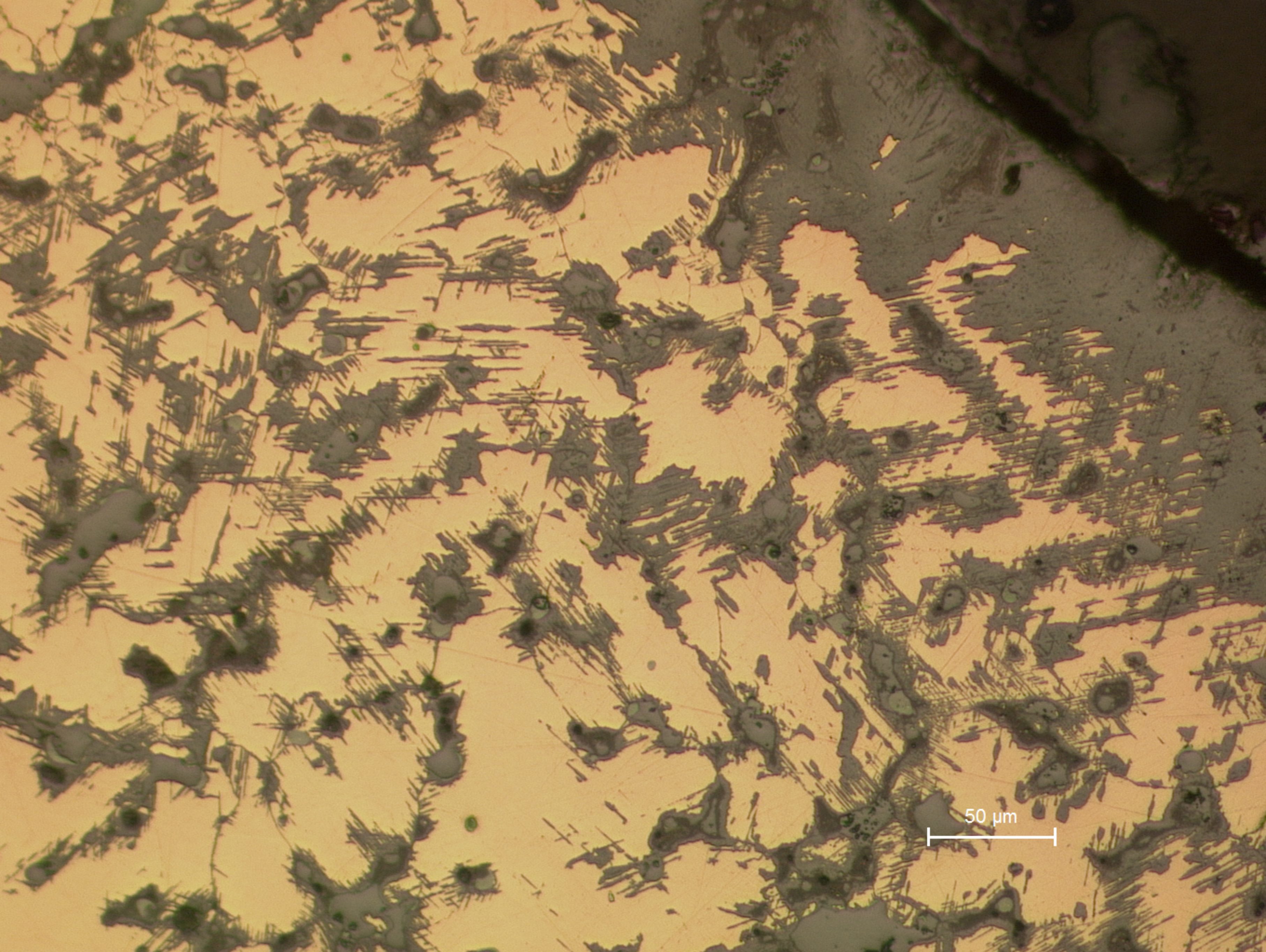
B82.3

General view of the central part: typical as-cast bronze structure containing many impurities in the interdendritic space, mostly oxides and sulfides (etchant: aqueous FeCl_3).

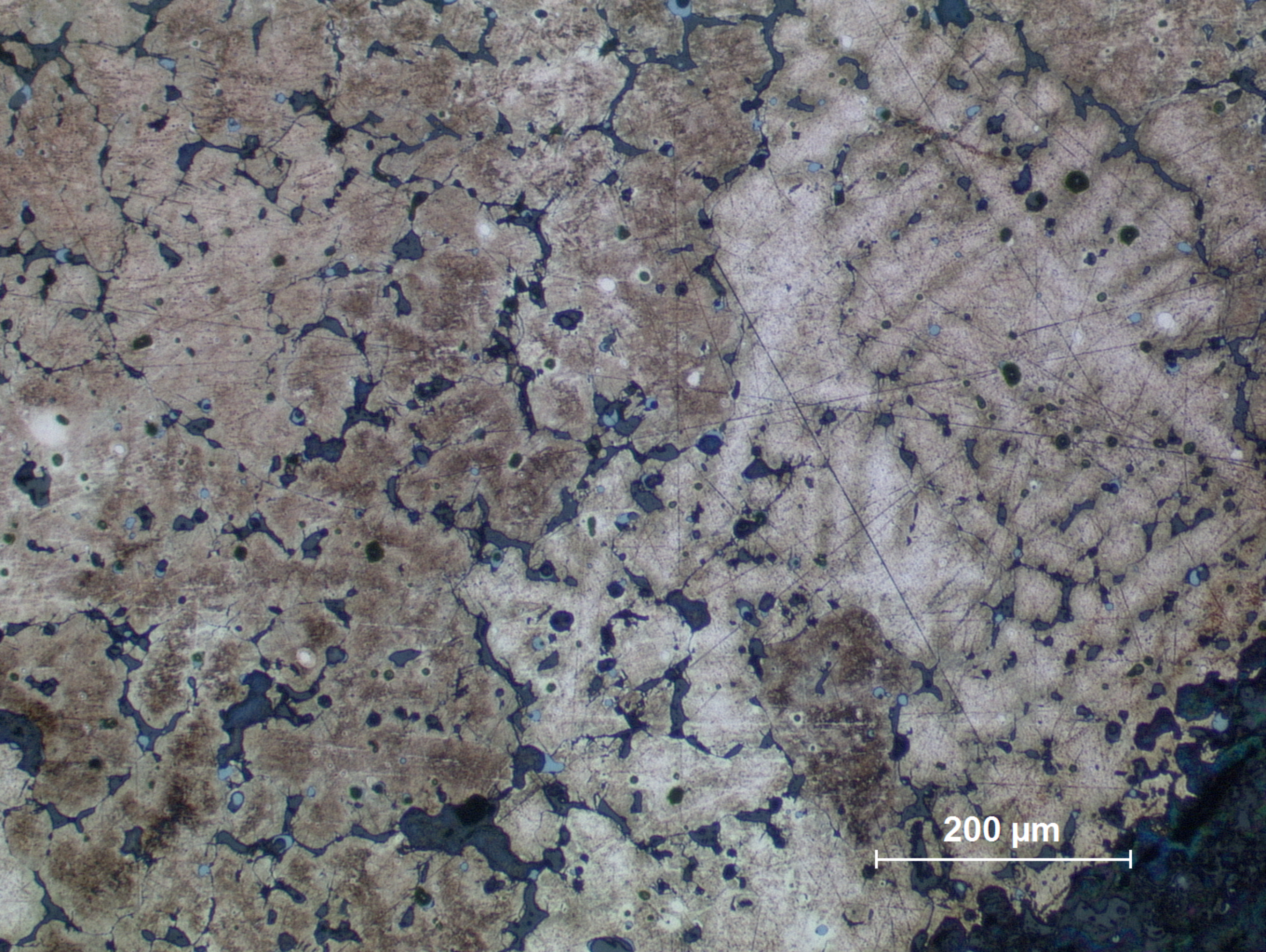


200 μm

B82.1
General view: showing radial development of dendrites, penetration of corrosion.



B82.2
Detail showing slip lines, probably due to cold work to close the tube.



200 μm

B82.3
General view of the central part: typical as-cast bronze structure containing many impurities in the interdendritic space, mostly oxides and sulfides (etchant: aqueous FeCl_3).