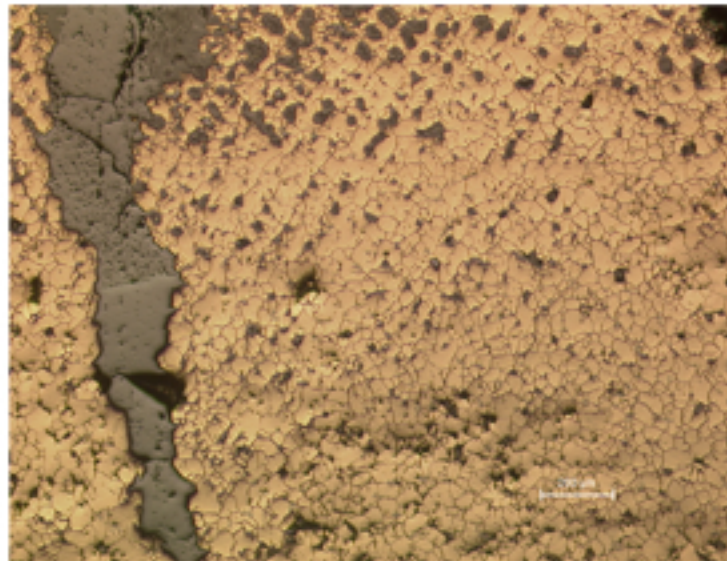


B93 - SMALL BRACELET



B93.1

Identification

Sample: B93
Card reference: C60
Origin/Location: n/a

Description

Bracelet made from a thick wire with a flat section. The metal alloy is bronze, with a very low tin content. Numerous oxide inclusions. Heavily corroded.

Figure captions

B93.1

General view showing the area near the surface (top) and a huge crack filled with oxides.

B93.2

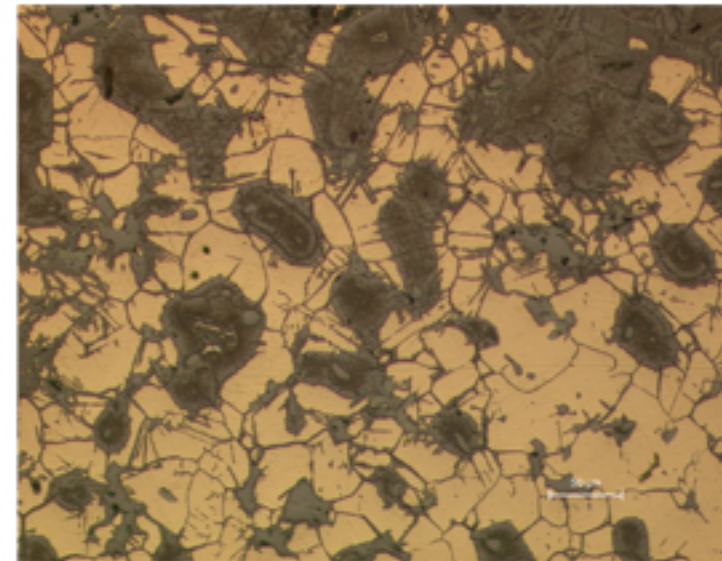
Detail of the surface area showing preferential corrosion, mostly intergranular and at strain lines.

B93.3

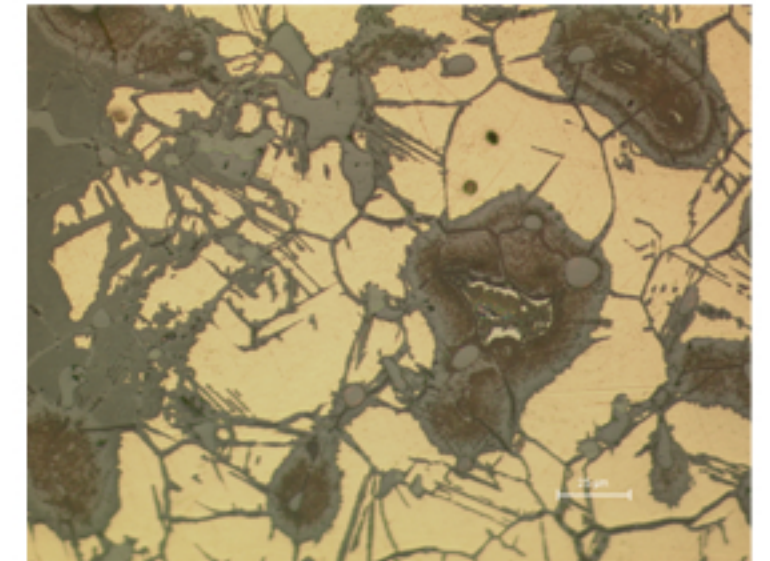
Detail of B93.2, showing the remains of eutectoid (white) and sulfide inclusions (blue grey) surrounded by impurities and corrosion products.

B93.4

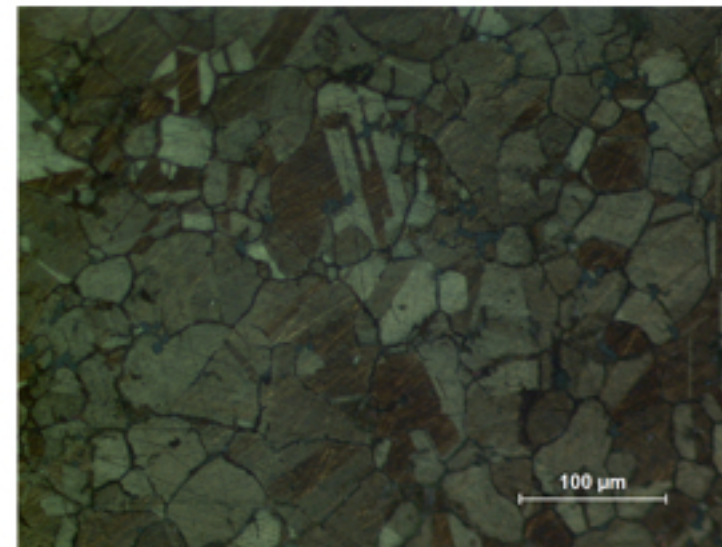
Recrystallized grains showing annealing twins (etchant: aqueous FeCl_3 , viewed under polarized light).



B93.2



B93.3

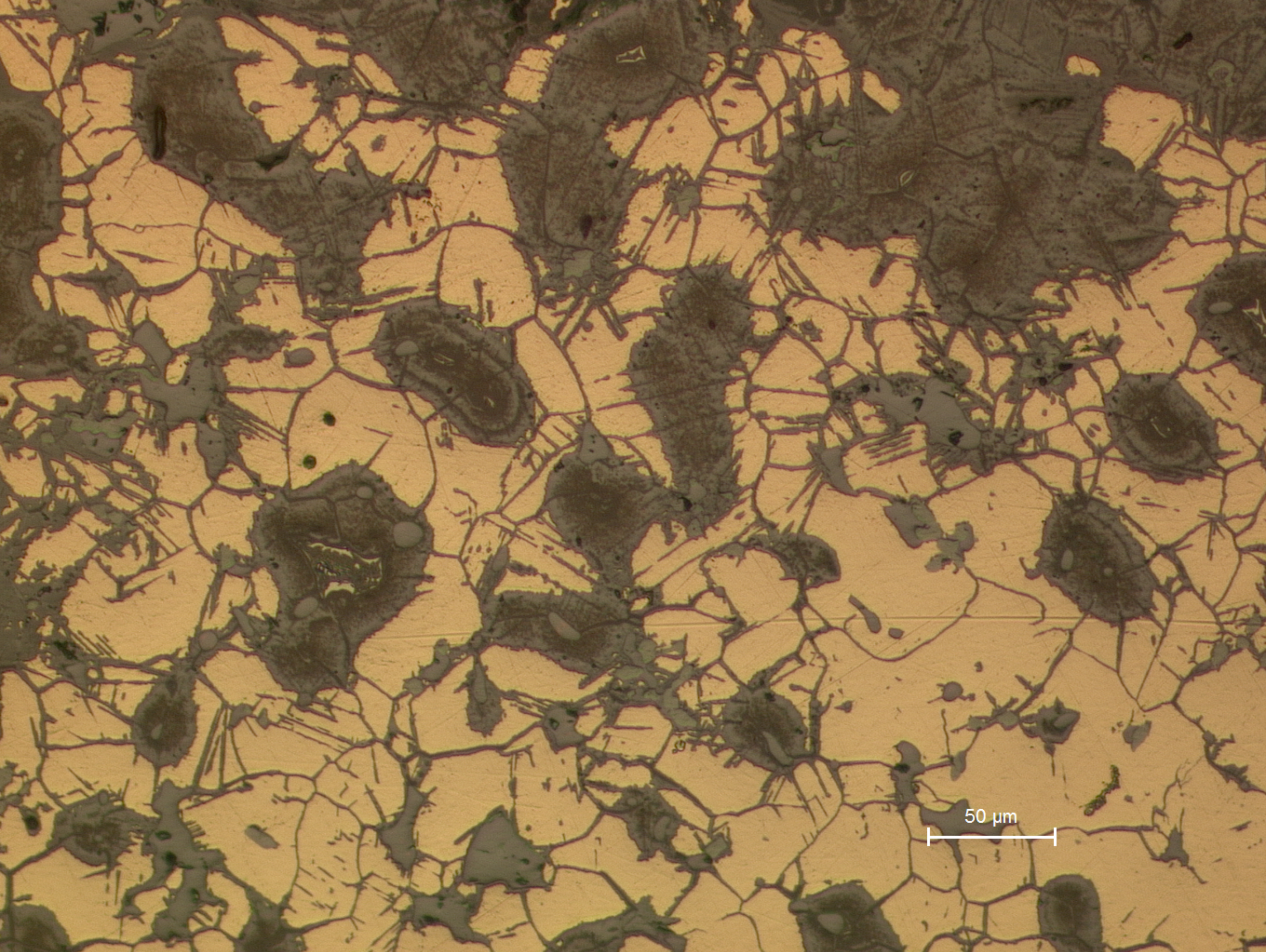


B93.4



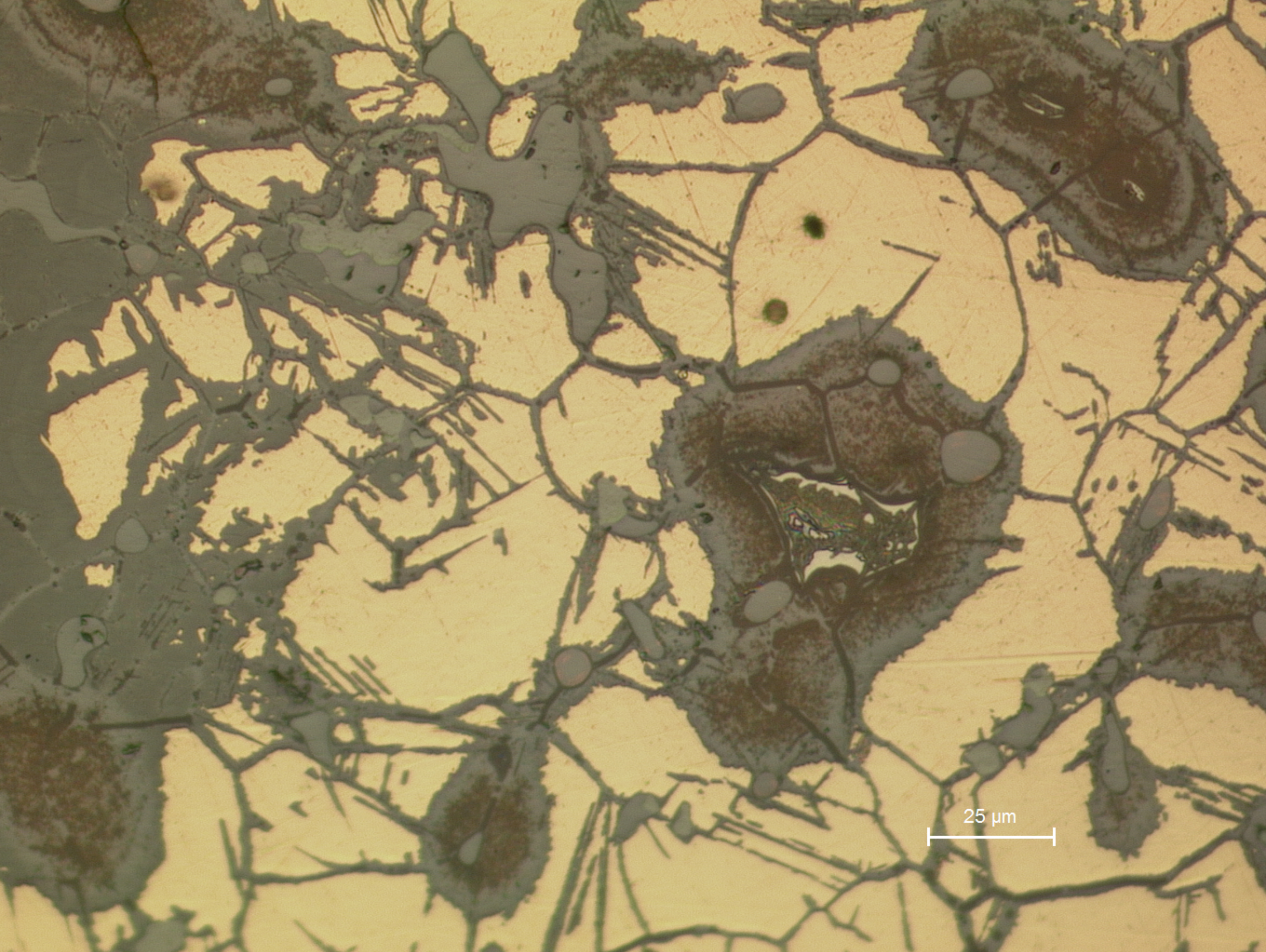
200 μm

B93.1
General view showing the area near the surface (top) and a huge crack filled with oxides.



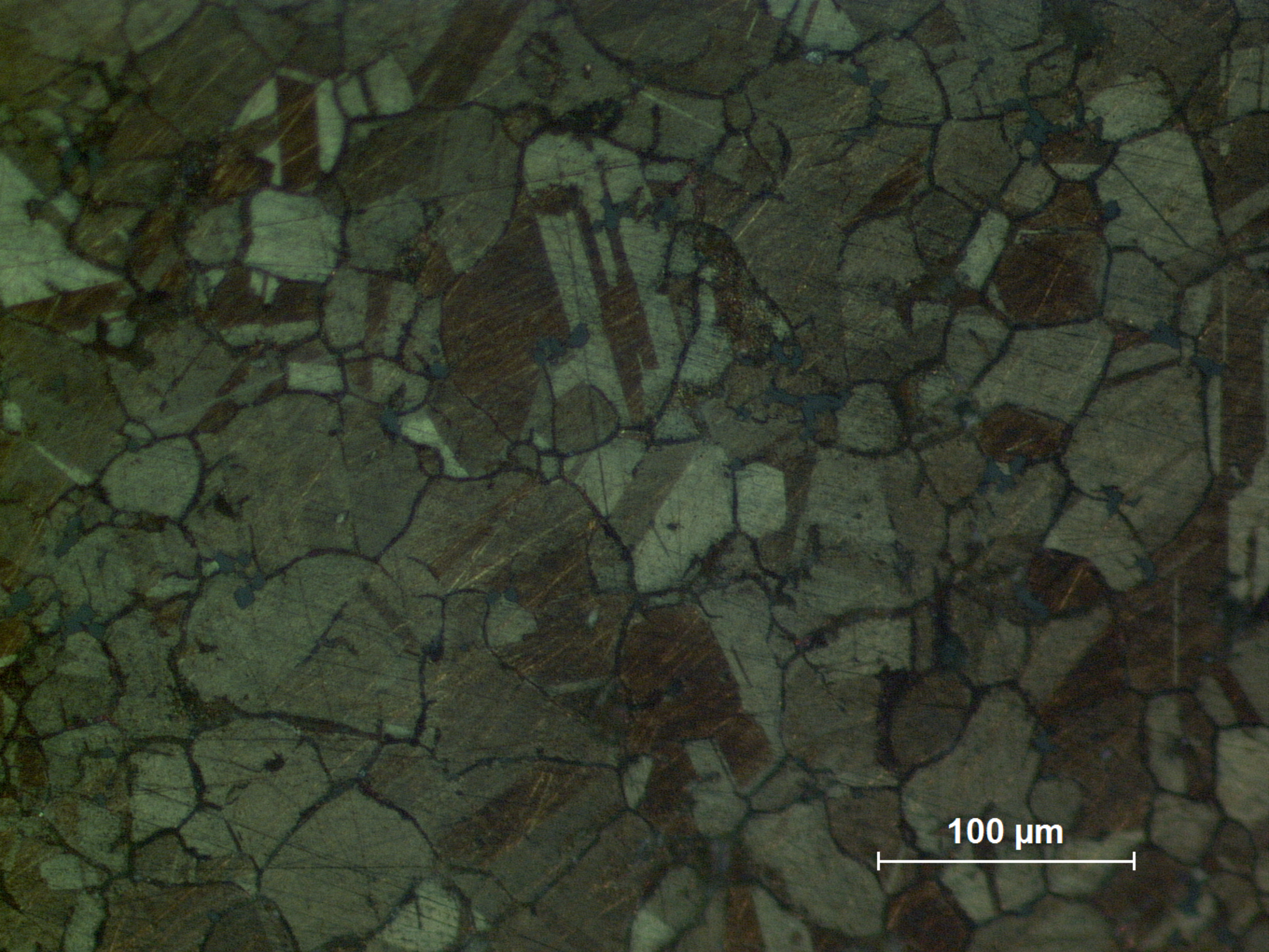
50 μm

B93.2
Detail of the surface area showing preferential corrosion, mostly intergranular and at strain lines.



25 μm

B93.3
Detail of B93.2, showing the remains of eutectoid (white) and sulfide inclusions (blue grey) surrounded by impurities and corrosion products.



100 μm

B93.4
Recrystallized grains showing annealing twins (etchant: aqueous FeCl_3 , viewed under polarized light).