



ICCROM

WORLD HERITAGE LEADERSHIP





ABOUT THE PROGRAMME

Linking people, nature and culture

The **World Heritage Leadership**  Programme is a partnership between **ICCROM, IUCN**, and the **Norwegian Ministry of Climate and the Environment**, in collaboration with the **World Heritage Centre** and **ICOMOS**.

The programme focuses on promoting links between **people-nature-culture** in the management heritage places and securing heritage a more dynamic role in wider sustainable development frameworks.

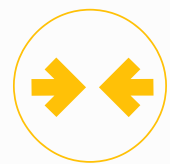
The Programme works through the **World Heritage Convention**, with heritage practitioners, management institutions and communities.

A scenic view of a historic city, likely Prague, seen through a stone archway. The city features a dense cluster of buildings with red-tiled roofs, a prominent church with spires, and a river flowing through the center. A large crowd of people is walking across a stone bridge that spans the river. The sky is overcast with grey clouds. The text 'The programme adopts the 'heritage place approach'' is overlaid in white on the image.

**The programme adopts
the 'heritage place approach'**



**Effective management of
Nature, Culture, Communities**



Resilience



Impact assessment



Learning networks

MEETING THE NEEDS



OUR WORK IN WORDS

Impact Assessment
Heritage place **Nature**
Capacity Building
WORLD HERITAGE LEADERSHIP
People, nature, culture
Effective management **Culture**
Risk Management **Peer Learning**
SDGs
World Heritage
EoH toolkit
Site Managers Forum
Research
Climate Change Adaptation
Leadership Networks
Sustainability
Resilience Cooperation
Knowledge exchange
Sustainable Development
People and communities
Site coordinators
PANORAMA

OUTPUT



OUTCOME



IMPACT



New knowledge and resources created, tested and used in capacity building environments and leadership networks

Site coordinators, heritage practitioners, focal points and communities are provided with resources and are trained to manage heritage places effectively

Improved management and conservation of World Heritage properties and heritage places through integrated and people-centred approaches to heritage

2020 - 2021 IN BRIEF

HERITAGE PLACE
LAB TEAMS

8



ADVISORY
SERVICES

6



PANORAMA
NATURE-
CULTURE
SOLUTIONS

32



PEOPLE REACHED

20000+

WEBINARS

10



CAPACITY BUILDING ACTIVITIES



30

PARTNERS

79



WHERE WE HAVE HAD AN IMPACT

Where we implemented our activities

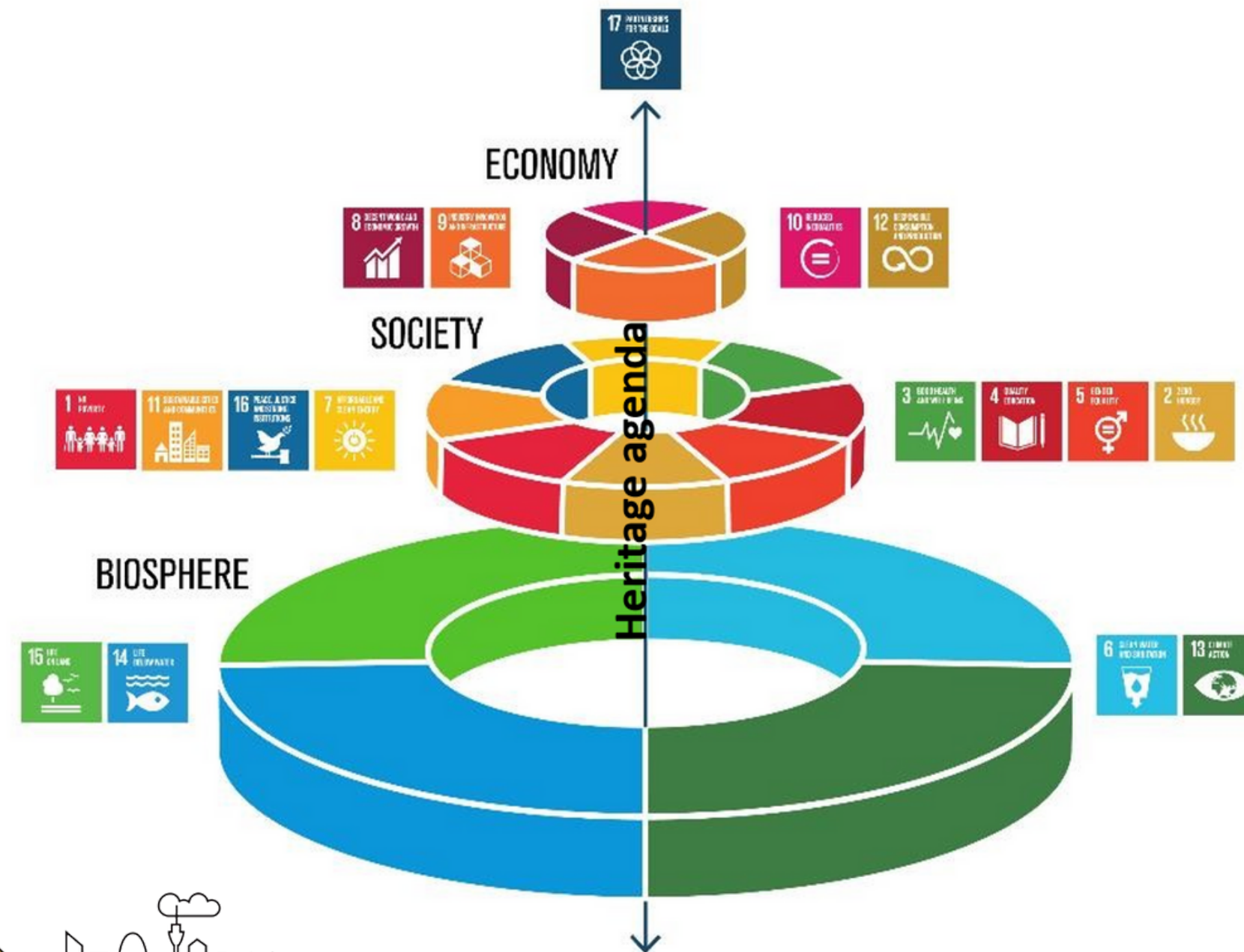
Albania
Australia
Azerbaijan
Bangladesh
Canada
Chile
China
Egypt
Germany
Italy
Japan
Jordan
Kenya
Laos
Norway
Palau
Palestine
Republic of Korea
Sweden
Tanzania
Vietnam
Yemen
Zambia
Zimbabwe



Participants come from

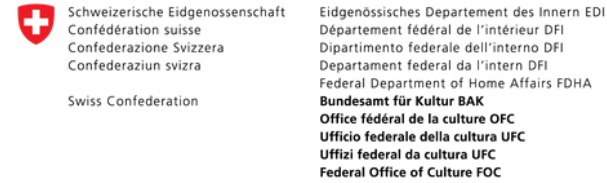
Albania
Argentina
Australia
Azerbaijan
Bahrain
Bangladesh
Bhutan
Botswana
Brazil
Cambodia
Canada
Chile
China
Colombia
Croatia
Czech Republic
Egypt
Finland
France
Germany
Ghana
Guatemala
Honduras
Hungary
India
Iran
Iraq
Ireland
Italy
Japan
Jordan
Kenya
Lebanon
Libya
Madagascar
Malaysia
Mauritius
Mexico
Namibia
Nigeria
North Macedonia
Norway
Palestine
Paraguay
Peru
Philippines
Poland
Portugal
Republic of Korea
Russian Federation
Saudi Arabia
South Africa
Spain
Sri Lanka
Sweden
Syria
Tanzania
Tunisia
United Kingdom
USA
Vietnam
Yemen
Zambia
Zimbabwe

OUR RESPONSE TO THE SDGs



SUSTAINABLE DEVELOPMENT GOALS

OUR PARTNERS



- Archaeological Park of Herculaneum, Italy
- Archaeological Park of Machu Picchu, Peru
- ARC-WH - Arab Regional Centre for World Heritage
- Argentina National Commission for UNESCO
- AWHCT - Ahmedabad World Heritage City Trust, India
- AWHF - African World Heritage Fund
- Bezalel Academy - Heriland
- Botswana National Museum
- CACH - World Cultural Heritage Center of China, Chinese Academy of Cultural Heritage
- Cairo Governorate, Egypt
- CHA - Cultural Heritage Administration, Republic of Korea
- Chinese National Commission for UNESCO
- City of Bamberg, Germany
- CNPAG - National Council for the Protection of La Antigua Guatemala
- CNPM - National Centre for World Heritage sites, Chile
- Department of Environment, Bangladesh
- Florence World Heritage and relationship with UNESCO Office, Italy
- FOC - Federal Office of Culture, Switzerland
- FOEN - Federal Office for the Environment, Switzerland
- GIZ - German Corporation for International Cooperation
- GMMB - Ghana Museums and Monuments Board
- GTWHI - George Town World Heritage Incorporated, Malaysia
- Gunditj Mirring Traditional Owners Aboriginal Corporation, Australia
- Herculaneum Conservation Project, Italy
- HES - Historic Environment Scotland, United Kingdom
- ICOMOS - International Council on Monuments and Sites
- ICOMOS-ICUCH - International Committee on the Underwater Cultural Heritage
- Indigenous Community Ma'u Henua, Chile

- IUCN - International Union for Conservation of Nature
- Jaipur Municipal Corporation and Town Planning Department, Government of Rajasthan, India
- KLD - Norwegian Ministry of Climate and Environment
- Koror State Government, Republic of Palau
- Lake Ledro Pile-Dwelling Museum, Italy
- Laponian Area World Heritage, Sweden
- Mie Prefectural Government Board of Education, Japan
- Ministry of Culture, Albania
- Ministry of Culture and Tourism of the province of Jujuy, Argentina
- Ministry of Tourism and Antiquities, Egypt
- MUJ - Manipal University Jaipur, India
- Municipality of Notodden, Norway
- Municipality of Røros, Norway
- Municipality of Tinn, Norway
- Municipality of Vinje, Norway
- NCAA - Ngorongoro Conservation Area Authority, United Republic of Tanzania
- NHCC - National Heritage Conservation Commission, Zambia
- NMK - National Museums of Kenya
- NMMZ - National Museums and Monuments of Zimbabwe
- Norwegian Directorate for Cultural Heritage
- Norwegian Environment Agency
- NUCH - Korea National University for Cultural Heritage
- Okavango Research Institute, University of Botswana
- OPW - Oifig na nOibreacha Poiblí, Office of Public Works, Ireland
- Palazzo Spinelli Group - Institute for Art and Restoration, Italy
- PANORAMA Secretariat
- Pimachiowin Aki Corporation, Canada
- R-DMUCH - Institute of Disaster Mitigation for Urban Cultural Heritage, Ritsumeikan University, Japan

- Royal Botanic Garden Edinburgh, United Kingdom
- SEAMEO SPAFA - Southeast Asian Regional Centre for Archaeology and Fine Arts
- SERNANP - National Service of Protected Areas, Peru
- SITMo - Save the Ifugao Terraces Movement, Philippines
- Technical Heritage Committee for Jaipur, India
- TOBUNKEN - Tokyo National Research Institute for Cultural Properties, Japan
- UBA - Universidad de Buenos Aires, Argentina
- UK National Commission for UNESCO
- UNESCO Almaty Office
- UNESCO Chair on African Heritage, Great Zimbabwe University
- UNESCO Bangkok Office
- UNESCO Dolomites Foundation, Italy
- UNESCO Ramallah Office
- UNESCO Site Office - Portovenere, Cinque Terre, and the Islands (Palmaria, Tino and Tinetto), Italy
- UNESCO WHC - World Heritage Centre
- UniGe - University of Genoa, Italy
- UNIQ - National Intercultural University of Quillabamba, Peru
- University of Ghana
- UNLP - National University of La Plata, Argentina
- University of Gothenburg, Sweden
- USAC - University of San Carlos of Guatemala
- USN - University of South-Eastern Norway
- Vestfold and Telemark County Council, Norway
- V&A - Culture in Crisis, Victoria & Albert Museum, United Kingdom
- WHITR-AP - World Heritage Institute of Training and Research for the Asia and the Pacific Region
- Wildlife Institute of India

WHAT'S NEXT?



20

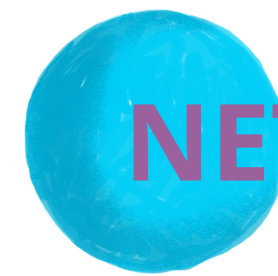
PROJECTS AND
ACTIVITIES
PLANNED



COURSES AND FORA



MANUALS, GUIDANCE AND
TOOLKITS



NETWORKING ACTIVITIES





“

*Without the
people you don't
have the soul of
the [heritage]
place*

”

Participant **PNC Course** 2021